

THE SOUNDBEAM[®] 2 HANDBOOK

APPENDIX 1 – SET-UPS AND PITCH SEQUENCES

THE SOUNDBEAM PROJECT

OCTOBER 2001

THE SOUNDBEAM[®] 2 HANDBOOK
APPENDIX 1 – SET-UPS AND PITCH SEQUENCES

A. SET-UPS 001 to 128

A complete collection of all settings for Sensor, Pitch Sequence, Range, Divisions, Trigger Mode, Transposition and MIDI Utilities assigned to each of Soundbeam 2's Set-ups.

Set-ups 001 to 030 are *Locked Set-ups*, preset in the factory. These settings can be changed but *not Saved*, and will normally revert to their original values when Soundbeam is switched off.

Set-ups 031 to 128 are *User Set-ups*. These settings – all of them identical with those in *Set-up 031* - have also been assigned in the factory. However, in these, any changes made by the user *can* be *Saved*, and will then become the new default settings, persisting even when Soundbeam is switched off and then on again.

3 copies of a blank form for recording the settings of new *User Set-ups* are supplied for photocopying purposes.

Set-up No. **001**Set-up Name. **Echoes**Composer / Arr. **Mark Newbold**

Date. 01/01/02

BUTTONS PAGE

SENSOR	Select Sensor	Beam 1	Beam 2	Beam 3	Beam 4	Switch 1	Switch 2	Switch 3	Switch 4	Switch 5	Switch 6	Switch 7	Switch 8
PAGE LEFT 1	Ctrl A Source		Gate	Speed	Speed					Gate			
PAGE LEFT 2	Ctrl A Destination		093	Note Velocity	Note Velocity					072			
PAGE LEFT 3	Ctrl A Depth		+001	+001	+001					+001			
PAGE LEFT 4	Ctrl A Minimum		085	112	090					085			
PAGE RIGHT 1	Ctrl B Source	Air Fader	Gate	Gate		Gate				Gate			
PAGE RIGHT 2	Ctrl B Destination	007	007	032		072				091			
PAGE RIGHT 3	Ctrl B Depth	+001	+001	+001		+001				+001			
PAGE RIGHT 4	Ctrl B Minimum	094	097	018		127				071			
PITCH SEQUENCE	PSQ Select	005 Major Triad+6th	018 Chord Sequence	005 Major Triad+6th	005 Major Triad+6th	018 Chord Sequence	018 Chord Sequence	018 Chord Sequence	018 Chord Sequence	005 Major Triad+6th	005 Major Triad+6th	005 Major Triad+6th	005 Major Triad+6th
RANGE	Max. Range	Default	Default	Default	Default								
PAGE LEFT 1	Min. Range	Default	Default	Default	Default								
BEAM DIVISION	No. of Divisions	16	08	32	16	01	01	01	01	04	16	16	16
PAGE RIGHT 1	Max Polyphony	08	08	08	08	08	08	08	08	08	08	08	08
PAGE LEFT 1	Offset	+08	-36	+00	+16	-33	-33	-36	-31	+02	+00	+15	+15
TRIGGER MODE	Select Trigger Mode	Re-Trigger	Re-Trigger	Re-Trigger	Re-Trigger	On/Off	On/Off	On/Off	On/Off	Re-Trigger	Re-Trigger	Re-Trigger	Re-Trigger
PAGE RIGHT 1	Gate Time	0.2s	0.2s	0.2s	0.2s	0.2s	0.2s	0.2s	0.2s	0.2s	0.2s	0.2s	0.2s
TRANSPOSE	No. Semitones +/-	+00	+12	+00	-12	+12	+24	+12	+12	+12	+24	-24	-24
PAGE RIGHT 1	Play Direction	Forward	Reverse	Reverse	Forward	Reverse	Forward	Forward	Forward	Reverse	Forward	Forward	Reverse
PAGE LEFT 1	Global	+00	+00	+00	+00	+00	+00	+00	+00	+00	+00	+00	+00
MIDI UTILITIES	MIDI Program Select	92	52	81	61	90	Off	Off	Off	94	11	104	47
PAGE RIGHT 1	Switch Monitor												
PAGE RIGHT 2	MIDI Bulk Dump												
PAGE RIGHT 3	Bulk Receive												
PAGE LEFT 1	MIDI Channel	01	02	03	04	05	05	05	05	06	11	12	13
PAGE LEFT 2	Start/Stop from												
PAGE LEFT 3	Realtime mode												
PAGE LEFT 4	MIDI Program Receive												

The settings for **Switches 1 to 4** are particularly suitable
for **On/Off Switches**

The settings for **Switches 5 to 8** are particularly suitable
for **Proportional Switches** (joysticks etc)

Set-up No. **002**Set-up Name. **Fan Fare**Composer / Arr. **Mark Newbold**

Date. 01/01/02

BUTTONS

PAGE

SENSOR	Select Sensor	Beam 1	Beam 2	Beam 3	Beam 4	Switch 1	Switch 2	Switch 3	Switch 4	Switch 5	Switch 6	Switch 7	Switch 8
PAGE LEFT 1	Ctrl A Source			Gate	Rel Length	Gate	Gate	Gate				Gate	
PAGE LEFT 2	Ctrl A Destination			7	7	72	72	72				065	
PAGE LEFT 3	Ctrl A Depth			+001	+001	+119	+115	+118				+082	
PAGE LEFT 4	Ctrl A Minimum			127	086	000	000	000				000	
PAGE RIGHT 1	Ctrl B Source	Speed		Gate		Gate	Gate	Gate				Gate	
PAGE RIGHT 2	Ctrl B Destination	Note Velocity		073		007	007	007				005	
PAGE RIGHT 3	Ctrl B Depth	+001		+001		+001	+001	+001				+044	
PAGE RIGHT 4	Ctrl B Minimum	098		000		119	115	118				082	
PITCH SEQUENCE	PSQ Select	007 Pentatonic Scale	018 Chord Sequence	007 Pentatonic Scale	007 Pentatonic Scale	018 Chord Sequence	018 Chord Sequence	018 Chord Sequence	018 Chord Sequence	007 Pentatonic Scale	007 Pentatonic Scale	007 Pentatonic Scale	007 Pentatonic Scale
RANGE	Max. Range	Default	Default	Default	Default								
PAGE LEFT 1	Min. Range	Default	Default	Default	Default								
BEAM DIVISION	No. of Divisions	16	08	16	16	01	01	01	01	16	08	32	16
PAGE RIGHT 1	Max Polyphony	08	08	08	08	08	08	08	08	08	08	08	08
PAGE LEFT 1	Offset	00	+26	+00	+00	+24	-09	+29	+35	+00	+03	+16	+00
TRIGGER MODE	Select Trigger Mode	Re-Trigger	Re-Trigger	Re-Trigger	Re-Trigger	On/Off	On/Off	On/Off	On/Off	Re-Trigger	Re-Trigger	Re-Trigger	Re-Trigger
PAGE RIGHT 1	Gate Time	0.2s	0.2s	0.2s	0.2s	0.2s	0.2s	0.2s	0.2s	0.2s	0.2s	0.2s	0.2s
TRANSCOPE	No. Semitones +/-	+12	+12	+12	-12	+17	+03	+00	+00	+00	-09	+12	+00
PAGE RIGHT 1	Play Direction	Forward	Forward	Forward	Forward	Forward	Reverse	Reverse	Forward	Reverse	Forward	Reverse	Reverse
PAGE LEFT 1	Global	+05	+05	+05	+05	+05	+05	+05	+05	+05	+05	+05	+05
MIDI UTILITIES	MIDI Program Select	61	53	102	34	52	53	54	54	1	10	79	11
PAGE RIGHT 1	Switch Monitor												
PAGE RIGHT 2	MIDI Bulk Dump												
PAGE RIGHT 3	Bulk Receive												
PAGE LEFT 1	MIDI Channel	01	02	03	04	05	06	07	08	09	10	11	12
PAGE LEFT 2	Start/Stop from												
PAGE LEFT 3	Realtime mode												
PAGE LEFT 4	MIDI Program Receive												

The settings for **Switches 1 to 4** are particularly suitable
for **On/Off Switches**

The settings for **Switches 5 to 8** are particularly suitable
for **Proportional Switches** (joysticks etc)

Set-up No. **003**Set-up Name. **Synth Dream**Composer / Arr. **Mark Newbold**

Date. 01/01/02

BUTTONS *PAGE*

SENSOR	Select Sensor	Beam 1	Beam 2	Beam 3	Beam 4	Switch 1	Switch 2	Switch 3	Switch 4	Switch 5	Switch 6	Switch 7	Switch 8
PAGE LEFT 1	Ctrl A Source	Gate	Speed	Speed	Speed	Gate	Voltage	Speed		Gate			Gate
PAGE LEFT 2	Ctrl A Destination	Note Velocity	Note Velocity	Note Velocity	Note Velocity	072	073	Note Velocity		007			7 Volume
PAGE LEFT 3	Ctrl A Depth	+01	+01	+01	+01	+01	+01	+01		+01			+01
PAGE LEFT 4	Ctrl A Minimum	127	090	085	099	127	077	048		071			81
PAGE RIGHT 1	Ctrl B Source	Gate	Gate	Gate	Gate	Gate	Gate	Gate	Gate	Gate		Voltage	
PAGE RIGHT 2	Ctrl B Destination	032	032	032	032	032	032	032	032	32		72 Release	
PAGE RIGHT 3	Ctrl B Depth	+01	+01	+01	+01	+01	+01	+01	+01	+01		1	
PAGE RIGHT 4	Ctrl B Minimum	066	063	064	064	066	040	041	066	099		105	
PITCH SEQUENCE	PSQ Select	026 Synth Dream	026 Synth Dream	026 Synth Dream	026 Synth Dream	026 Synth Dream	026 Synth Dream	026 Synth Dream	026 Synth Dream	026 Synth Dream	026 Synth Dream	026 Synth Dream	026 Synth Dream
RANGE	Max. Range	Default	Default	Default	Default								
PAGE LEFT 1	Min. Range	Default	Default	Default	Default								
BEAM DIVISION	No. of Divisions	16	9	16	16	1	1	1	1	16	16	16	16
PAGE RIGHT 1	Max Polyphony	1	4	1	1	4	4	4	8	8	8	1	1
PAGE LEFT 1	Offset	+7	-4	+07	+09	+07	-06	-3	-7	+9	+9	+24	+9
TRIGGER MODE	Select Trigger Mode	Re-Trigger	Re-Trigger	Re-Trigger	Re-Trigger	On/Off	On/Off	On/Off	On/Off	Re-Trigger	Re-Trigger	Re-Trigger	Re-Trigger
PAGE RIGHT 1	Gate Time												
TRANSPOSE	No. Semitones +/-	+12	00	-12	+07	00	+12	+12	+12	+12	+19	0	+12
PAGE RIGHT 1	Play Direction	Forward	Forward	Reverse	Forward	Forward	Forward	Forward	Forward	Reverse	Forward	Reverse	Reverse
PAGE LEFT 1	Global	0	0	0	0	0	0	0	0	0	0	0	0
MIDI UTILITIES	MIDI Program Select	103	98	97	90	96	45	1	92	113	79	90	94
PAGE RIGHT 1	Switch Monitor												
PAGE RIGHT 2	MIDI Bulk Dump												
PAGE RIGHT 3	Bulk Receive												
PAGE LEFT 1	MIDI Channel	01	02	03	04	05	06	07	08	09	11	12	14
PAGE LEFT 2	Start/Stop from												
PAGE LEFT 3	Realtime mode												
PAGE LEFT 4	MIDI Program Receive												

The settings for **Switches 1 to 4** are particularly suitable
for **On/Off Switches**

The settings for **Switches 5 to 8** are particularly suitable
for **Proportional Switches** (joysticks etc)

Set-up No. **004**Set-up Name. **Major Arpeggio**Composer / Arr. **Edward Williams**

Date. 01/01/02

BUTTONS PAGE

SENSOR	Select Sensor	Beam 1	Beam 2	Beam 3	Beam 4	Switch 1	Switch 2	Switch 3	Switch 4	Switch 5	Switch 6	Switch 7	Switch 8
PAGE LEFT 1	Ctrl A Source	Gate		Speed	Speed								
PAGE LEFT 2	Ctrl A Destination	007		007	007								
PAGE LEFT 3	Ctrl A Depth	+01		+085	+085								
PAGE LEFT 4	Ctrl A Minimum	117		035	035								
PAGE RIGHT 1	Ctrl B Source												
PAGE RIGHT 2	Ctrl B Destination												
PAGE RIGHT 3	Ctrl B Depth												
PAGE RIGHT 4	Ctrl B Minimum												
PITCH SEQUENCE	PSQ Select	003 Maj Tri,7,9,11	018 Chord Sequence	003 Maj Tri,7,9,11	003 Maj Tri,7,9,11	003 Maj Tri,7,9,11	003 Maj Tri,7,9,11	003 Maj Tri,7,9,11	003 Maj Tri,7,9,11	003 Maj Tri,7,9,11	003 Maj Tri,7,9,11	003 Maj Tri,7,9,11	003 Maj Tri,7,9,11
RANGE	Max. Range	Default	Default	Default	Default								
PAGE LEFT 1	Min. Range	Default	Default	Default	Default								
BEAM DIVISION	No. of Divisions	16	04	16	16	01	01	01	01	16	08	16	08
PAGE RIGHT 1	Max Polyphony	08	08	08	08	08	08	08	08	08	08	08	08
PAGE LEFT 1	Offset	+08	+00	+08	+08	+00	+02	+03	+04	+00	+16	+16	+00
TRIGGER MODE	Select Trigger Mode	Re-Trigger	Re-Trigger	Re-Trigger	Re-Trigger	On/Off	On/Off	On/Off	On/Off	Re-Trigger	Re-Trigger	Re-Trigger	Re-Trigger
PAGE RIGHT 1	Gate Time	0.2s	0.2s	0.2s	0.2s	0.2s	0.2s	0.2s	0.2s	0.2s	0.2s	0.2s	0.2s
TRANSCOPE	No. Semitones +/-	+11	+11	+18	+13	-11	-11	-11	-11	+18	+11	+11	+11
PAGE RIGHT 1	Play Direction	Forward	Reverse	Forward	Reverse	Reverse	Forward	Forward	Forward	Forward	Reverse	Reverse	Forward
PAGE LEFT 1	Global	+00	+00	+00	+00	+00	+00	+00	+00	+00	+00	+00	+00
MIDI UTILITIES	MIDI Program Select	9	98	10	95	52	Off	Off	Off	47	53	90	93
PAGE RIGHT 1	Switch Monitor												
PAGE RIGHT 2	MIDI Bulk Dump												
PAGE RIGHT 3	Bulk Receive												
PAGE LEFT 1	MIDI Channel	01	02	03	04	05	05	05	05	06	07	08	09
PAGE LEFT 2	Start/Stop from												
PAGE LEFT 3	Realtime mode												
PAGE LEFT 4	MIDI Program Receive												

The settings for **Switches 1 to 4** are particularly suitable
for **On/Off Switches**

The settings for **Switches 5 to 8** are particularly suitable
for **Proportional Switches** (joysticks etc)

LOCKED SET-UPS

Set-up No. **005**

Set-up Name. **GM Drum Set**

Composer / Arr. **Mark Newbold**

Date. 01/01/02

BUTTONS PAGE

SENSOR	Select Sensor	Beam 1	Beam 2	Beam 3	Beam 4	Switch 1	Switch 2	Switch 3	Switch 4	Switch 5	Switch 6	Switch 7	Switch 8
PAGE LEFT 1	Ctrl A Source												
PAGE LEFT 2	Ctrl A Destination												
PAGE LEFT 3	Ctrl A Depth												
PAGE LEFT 4	Ctrl A Minimum												
PAGE RIGHT 1	Ctrl B Source	Speed											
PAGE RIGHT 2	Ctrl B Destination	010											
PAGE RIGHT 3	Ctrl B Depth	+100											
PAGE RIGHT 4	Ctrl B Minimum	000											
PITCH SEQUENCE	PSQ Select	017 Chromatic Scale	017 Chromatic Scale	017 Chromatic Scale	017 Chromatic Scale	017 Chromatic Scale	017 Chromatic Scale	017 Chromatic Scale	017 Chromatic Scale	017 Chromatic Scale	017 Chromatic Scale	017 Chromatic Scale	017 Chromatic Scale
RANGE	Max. Range	Default	Default	Default	Default								
PAGE LEFT 1	Min. Range	Default	Default	Default	Default								
BEAM DIVISION	No. of Divisions	04	04	04	05	01	01	01	01	01	02	04	02
PAGE RIGHT 1	Max Polyphony	08	08	08	08	08	08	08	08	08	08	08	08
PAGE LEFT 1	Offset	+00	+00	+00	+00	+10	+10	+03	+04	+08	+08	+06	+05
TRIGGER MODE	Select Trigger Mode	Single Shot	Re-Trigger	Re-Trigger	Re-Trigger	On/Off	On/Off	On/Off	On/Off	On/Off	Re-Trigger	Re-Trigger	Re-Trigger
PAGE RIGHT 1	Gate Time	0.2s	0.2s	0.2s	0.2s	0.2s	0.2s	0.2s	0.2s	0.2s	0.2s	0.2s	0.2s
TRANPOSE	No. Semitones +/-	-21	-04	-10	+06	-22	-22	-13	-12	+00	+01	+02	+06
PAGE RIGHT 1	Play Direction	Forward	Forward	Forward	Forward	Forward	Forward	Forward	Forward	Forward	Forward	Forward	Forward
PAGE LEFT 1	Global	+00	+00	+00	+00	+00	+00	+00	+00	+00	+00	+00	+00
MIDI UTILITIES	MIDI Program Select	1	Off	Off	Off	Off	Off	Off	Off	Off	Off	Off	Off
PAGE RIGHT 1	Switch Monitor												
PAGE RIGHT 2	MIDI Bulk Dump												
PAGE RIGHT 3	Bulk Receive												
PAGE LEFT 1	MIDI Channel	10	10	10	10	10	10	10	10	10	10	10	10
PAGE LEFT 2	Start/Stop from												
PAGE LEFT 3	Realtime mode												
PAGE LEFT 4	MIDI Program Receive												

The settings for **Switches 1 to 4** are particularly suitable for **On/Off Switches**

The settings for **Switches 5 to 8** are particularly suitable for **Proportional Switches** (joysticks etc)

Set-up No. **006**Set-up Name. **Fairy Dust**Composer / Arr. **Mark Newbold**

Date. 01/01/02

BUTTONS PAGE

SENSOR	Select Sensor	Beam 1	Beam 2	Beam 3	Beam 4	Switch 1	Switch 2	Switch 3	Switch 4	Switch 5	Switch 6	Switch 7	Switch 8
PAGE LEFT 1	Ctrl A Source	Gate	Rel Length	Gate	Speed					Voltage	Voltage	Voltage	Voltage
PAGE LEFT 2	Ctrl A Destination	072	010	072	Note Velocity					065	10	072	
PAGE LEFT 3	Ctrl A Depth	+001	+100	+002	+001					+002	+100	+002	OFF
PAGE LEFT 4	Ctrl A Minimum	104	000	118	038					078	000	119	000
PAGE RIGHT 1	Ctrl B Source	Speed	Speed	Speed	Gate	Voltage			Voltage	Voltage			Voltage
PAGE RIGHT 2	Ctrl B Destination	007	7	074	072	093			072	005			094
PAGE RIGHT 3	Ctrl B Depth	+065	+100	+100	+001	+001			+100	+001			+002
PAGE RIGHT 4	Ctrl B Minimum	064	000	064	125	121			000	037			082
PITCH SEQUENCE	PSQ Select	002 Arp. Minor Triad	002 Arp. Minor Triad	002 Arp. Minor Triad	002 Arp. Minor Triad	017 Chromatic Scale	017 Chromatic Scale	017 Chromatic Scale	017 Chromatic Scale	002 Arp. Minor Triad	002 Arp. Minor Triad	002 Arp. Minor Triad	002 Arp. Minor Triad
RANGE	Max. Range	Default	Default	Default	Default								
PAGE LEFT 1	Min. Range	Default	Default	Default	Default								
BEAM DIVISION	No. of Divisions	16	16	16	08	01	01	01	01	16	16	32	16
PAGE RIGHT 1	Max Polyphony	08	08	08	08	08	08	08	08	08	08	08	08
PAGE LEFT 1	Offset	+15	+15	+15	+03	+28	+27	+25	+11	+16	+16	+16	+16
TRIGGER MODE	Select Trigger Mode	Re-Trigger	Re-Trigger	Re-Trigger	Re-Trigger	On/Off	On/Off	On/Off	On/Off	Re-Trigger	Re-Trigger	Re-Trigger	Re-Trigger
PAGE RIGHT 1	Gate Time	0.2s	0.2s	0.2s	0.2s	0.2s	0.2s	0.2s	0.2s	0.2s	0.2s	0.2s	0.2s
TRANSCOPE	No. Semitones +/-	+00	+12	-36	+12	+00	+00	+00	+00	+24	+24	+24	+00
PAGE RIGHT 1	Play Direction	Forward	Forward	Forward	Forward	Reverse	Reverse	Reverse	Reverse	Reverse	Forward	Forward	Forward
PAGE LEFT 1	Global	+00	+00	+00	+00	+00	+00	+00	+00	+00	+00	+00	+00
MIDI UTILITIES	MIDI Program Select	097	113	124	053	002	Off	Off	Off	080	108	100	114
PAGE RIGHT 1	Switch Monitor												
PAGE RIGHT 2	MIDI Bulk Dump												
PAGE RIGHT 3	Bulk Receive												
PAGE LEFT 1	MIDI Channel	01	02	03	04	10	10	10	10	09	11	12	13
PAGE LEFT 2	Start/Stop from												
PAGE LEFT 3	Realtime mode												
PAGE LEFT 4	MIDI Program Receive												

The settings for **Switches 1 to 4** are particularly suitable
for **On/Off Switches**

The settings for **Switches 5 to 8** are particularly suitable
for **Proportional Switches** (joysticks etc)

LOCKED SET-UPS

Set-up No. **007**

Set-up Name. **Cloudscape**

Composer / Arr. **Mark Newbold**

Date. 01/01/02

BUTTONS PAGE

SENSOR	Select Sensor	Beam 1	Beam 2	Beam 3	Beam 4	Switch 1	Switch 2	Switch 3	Switch 4	Switch 5	Switch 6	Switch 7	Switch 8
PAGE LEFT 1	Ctrl A Source	Speed	Gate	Speed	Speed					Speed	Speed		
PAGE LEFT 2	Ctrl A Destination	007	007	007	007					072	010		
PAGE LEFT 3	Ctrl A Depth	+065	+001	+065	+065					+001	+100		
PAGE LEFT 4	Ctrl A Minimum	035	060	035	035					127	000		
PAGE RIGHT 1	Ctrl B Source												
PAGE RIGHT 2	Ctrl B Destination												
PAGE RIGHT 3	Ctrl B Depth												
PAGE RIGHT 4	Ctrl B Minimum												
PITCH SEQUENCE	PSQ Select	001 Arp.Major Triad	018 Chord Sequence	001 Arp.Major Triad	001 Arp.Major Triad	001 Arp.Major Triad	001 Arp.Major Triad	001 Arp.Major Triad	001 Arp.Major Triad	001 Arp.Major Triad	001 Arp.Major Triad	001 Arp.Major Triad	001 Arp.Major Triad
RANGE	Max. Range	Default	Default	Default	Default								
PAGE LEFT 1	Min. Range	Default	Default	Default	Default								
BEAM DIVISION	No. of Divisions	32	04	16	16	01	01	01	01	08	16	08	32
PAGE RIGHT 1	Max Polyphony	08	08	08	08	08	08	08	08	08	08	08	08
PAGE LEFT 1	Offset	+08	+30	+08	+08	+07	+09	+10	+11	+02	+08	+20	+08
TRIGGER MODE	Select Trigger Mode	Re-Trigger	Re-Trigger	Re-Trigger	Re-Trigger	On/Off	On/Off	On/Off	On/Off	Re-Trigger	Re-Trigger	On/Off	On/Off
PAGE RIGHT 1	Gate Time	0.2s	0.2s	0.2s	0.2s	0.2s	0.2s	0.2s	0.2s	0.2s	0.2s	0.2s	0.2s
TRANSCOPE	No. Semitones +/-	+12	+10	+17	-19	+00	+12	+00	+00	+10	+12	-12	+00
PAGE RIGHT 1	Play Direction	Forward	Reverse	Forward	Reverse	Reverse	Reverse	Reverse	Reverse	Forward	Reverse	Forward	Forward
PAGE LEFT 1	Global	+00	+00	+00	+00	+00	+00	+00	+00	+00	+00	+00	+00
MIDI UTILITIES	MIDI Program Select	067	006	010	095	090	off	off	Off	097	050	063	047
PAGE RIGHT 1	Switch Monitor												
PAGE RIGHT 2	MIDI Bulk Dump												
PAGE RIGHT 3	Bulk Receive												
PAGE LEFT 1	MIDI Channel	01	02	03	04	05	05	05	05	06	07	08	09
PAGE LEFT 2	Start/Stop from												
PAGE LEFT 3	Realtime mode												
PAGE LEFT 4	MIDI Program Receive												

The settings for **Switches 1 to 4** are particularly suitable for **On/Off Switches**

The settings for **Switches 5 to 8** are particularly suitable for **Proportional Switches** (joysticks etc)

LOCKED SET-UPSSet-up No. **008**Set-up Name. **Snowy Night**Composer / Arr. **Mark Newbold**

Date. 01/01/02

BUTTONS PAGE

SENSOR	Select Sensor	Beam 1	Beam 2	Beam 3	Beam 4	Switch 1	Switch 2	Switch 3	Switch 4	Switch 5	Switch 6	Switch 7	Switch 8
PAGE LEFT 1	Ctrl A Source	Speed	Gate	Rel Length	Gate	Voltage	Voltage	Voltage	Voltage			Voltage	Speed
PAGE LEFT 2	Ctrl A Destination	Note Velocity	007	072	072	072	072	072	007			074	Note Velocity
PAGE LEFT 3	Ctrl A Depth	+020	+001	+001	+001	+001	+001	+001	+001			+021	+001
PAGE LEFT 4	Ctrl A Minimum	041	079	108	124	114	080	109	100			082	051
PAGE RIGHT 1	Ctrl B Source	Speed	Gate		Speed	Speed	Speed	Speed	Voltage	Speed		Voltage	
PAGE RIGHT 2	Ctrl B Destination	091	072		Note Velocity	Note Velocity	Note Velocity	Note Velocity	094	Note Velocity		007	
PAGE RIGHT 3	Ctrl B Depth	+100	+002		+001	+001	+001	+001	+100	+001		+001	
PAGE RIGHT 4	Ctrl B Minimum	046	127		064	050	049	045	068	071		122	
PITCH SEQUENCE	PSQ Select	021 Snowy Night	021 Snowy Night	021 Snowy Night	021 Snowy Night	021 Snowy Night	021 Snowy Night	021 Snowy Night	021 Snowy Night	021 Snowy Night	021 Snowy Night	021 Snowy Night	021 Snowy Night
RANGE	Max. Range	Default	Default	Default	Default								
PAGE LEFT 1	Min. Range	Default	Default	Default	Default								
BEAM DIVISION	No. of Divisions	26	03	16	10	02	02	02	01	32	16	10	26
PAGE RIGHT 1	Max Polyphony	08	08	08	08	05	05	05	08	08	08	08	08
PAGE LEFT 1	Offset	-12	-26	-06	-05	-26	-25	-26	+00	+02	+00	-22	-12
TRIGGER MODE	Select Trigger Mode	Re-Trigger	Re-trig Sustian	Re-Trigger	Re-Trigger	Re-Trigger	Re-Trigger	Re-Trigger	On/Off	On/Off	Re-Trigger	Re-Trigger	Re-Trigger
PAGE RIGHT 1	Gate Time	0.2s	0.2s	0.2s	0.2s	0.2s	0.2s	0.2s	0.2s	0.2s	0.2s	0.2s	0.2s
TRANPOSE	No. Semitones +/-	+12	+24	+00	+00	+24	+24	+24	+29	+12	+12	+00	+12
PAGE RIGHT 1	Play Direction	Forward	Forward	Reverse	Forward	Forward	Forward	Reverse	Forward	Forward	Forward	Forward	Reverse
PAGE LEFT 1	Global	+00	+00	+00	+00	+00	+00	+00	+00	+00	+00	+00	+00
MIDI UTILITIES	MIDI Program Select	073	090	054	097	001	001	001	001	047	045	036	013
PAGE RIGHT 1	Switch Monitor												
PAGE RIGHT 2	MIDI Bulk Dump												
PAGE RIGHT 3	Bulk Receive												
PAGE LEFT 1	MIDI Channel	01	02	03	04	05	06	07	10	09	11	12	13
PAGE LEFT 2	Start/Stop from												
PAGE LEFT 3	Realtime mode												
PAGE LEFT 4	MIDI Program Receive												

The settings for **Switches 1 to 4** are particularly suitable
for **On/Off Switches**

The settings for **Switches 5 to 8** are particularly suitable
for **Proportional Switches** (joysticks etc)

Set-up No. **009**Set-up Name. **Bristol Blues**Composer / Arr. **Mark Newbold**

Date. 01/01/02

BUTTONS PAGE

SENSOR	Select Sensor	Beam 1	Beam 2	Beam 3	Beam 4	Switch 1	Switch 2	Switch 3	Switch 4	Switch 5	Switch 6	Switch 7	Switch 8
PAGE LEFT 1	Ctrl A Source	Gate			Gate			Voltage					
PAGE LEFT 2	Ctrl A Destination	091			094			072					
PAGE LEFT 3	Ctrl A Depth	+001			+53			+001					
PAGE LEFT 4	Ctrl A Minimum	064			000			127					
PAGE RIGHT 1	Ctrl B Source	Gate	Gate	Gate	Rel Length						Voltage		
PAGE RIGHT 2	Ctrl B Destination	007	007	093	Pitch Bend						094		
PAGE RIGHT 3	Ctrl B Depth	OFF	+001	+021	+025						+004		
PAGE RIGHT 4	Ctrl B Minimum	110	067	062	000						088		
PITCH SEQUENCE	PSQ Select	016 Bristol Blues	016 Bristol Blues	016 Bristol Blues	016 Bristol Blues	017 Chromatic Scale	017 Chromatic Scale	017 Chromatic Scale	017 Chromatic Scale	016 Bristol Blues	016 Bristol Blues	016 Bristol Blues	016 Bristol Blues
RANGE	Max. Range	Default	Default	Default	Default								
PAGE LEFT 1	Min. Range	Default	Default	Default	Default								
BEAM DIVISION	No. of Divisions	16	09	16	16	01	01	01	01	16	16	08	16
PAGE RIGHT 1	Max Polyphony	08	08	08	08	08	08	08	08	08	08	08	08
PAGE LEFT 1	Offset	-21	+18	-05	-21	+00	+00	-03	+07	-17	-15	-05	-22
TRIGGER MODE	Select Trigger Mode	Re-Trigger	Re-Trigger	Re-Trigger	Single Shot	On/Off	On/Off	On/Off	On/Off	Re-Trigger	Re-Trigger	Re-Trigger	Re-Trigger
PAGE RIGHT 1	Gate Time	0.2s	0.2s	0.2s	0.2s	0.2s	0.2s	0.2s	0.2s	0.2s	0.2s	0.2s	0.2s
TRANPOSE	No. Semitones +/-	+00	+00	-12	+00	-21	-14	-01	+02	+12	+00	+00	+00
PAGE RIGHT 1	Play Direction	Reverse	Forward	Forward	Forward	Reverse	Reverse	Forward	Forward	Forward	Reverse	Reverse	Forward
PAGE LEFT 1	Global	+00	+00	+00	+00	+00	+00	+00	+00	+00	+00	+00	+00
MIDI UTILITIES	MIDI Program Select	023	062	033	030	017	013	Off	090	060	026	067	050
PAGE RIGHT 1	Switch Monitor												
PAGE RIGHT 2	MIDI Bulk Dump												
PAGE RIGHT 3	Bulk Receive												
PAGE LEFT 1	MIDI Channel	01	02	03	04	10	10	10	10	09	11	12	13
PAGE LEFT 2	Start/Stop from												
PAGE LEFT 3	Realtime mode												
PAGE LEFT 4	MIDI Program Receive												

The settings for **Switches 1 to 4** are particularly suitable
for **On/Off Switches**

The settings for **Switches 5 to 8** are particularly suitable
for **Proportional Switches** (joysticks etc)

Set-up No. **010**Set-up Name. **Jazzier**Composer / Arr. **Mark Newbold**

Date. 01/01/02

BUTTONS PAGE

SENSOR	Select Sensor	Beam 1	Beam 2	Beam 3	Beam 4	Switch 1	Switch 2	Switch 3	Switch 4	Switch 5	Switch 6	Switch 7	Switch 8
PAGE LEFT 1	Ctrl A Source		Rel Length	Gate	Rel Length					Voltage		Gate	Gate
PAGE LEFT 2	Ctrl A Destination		007	065	065					072		007	091
PAGE LEFT 3	Ctrl A Depth		+001	+001	+001					+002		+001	+001
PAGE LEFT 4	Ctrl A Minimum		+001	065	074					127		113	127
PAGE RIGHT 1	Ctrl B Source		Gate		Rel Length					Voltage		Voltage	Voltage
PAGE RIGHT 2	Ctrl B Destination		072		005					091		093	007
PAGE RIGHT 3	Ctrl B Depth		+001		+001					+001		+001	+001
PAGE RIGHT 4	Ctrl B Minimum		104		039					127		088	094
PITCH SEQUENCE	PSQ Select	023 Jazz 01 Scale	018 Chord Sequence	023 Jazz 01 Scale	023 Jazz 01 Scale	017 Chromatic Scale	017 Chromatic Scale	017 Chromatic Scale	017 Chromatic Scale	023 Jazz 01 Scale	023 Jazz 01 Scale	023 Jazz 01 Scale	023 Jazz 01 Scale
RANGE	Max. Range	Default	Default	Default	Default								
PAGE LEFT 1	Min. Range	Default	Default	Default	Default								
BEAM DIVISION	No. of Divisions	20	05	08	20	01	01	01	01	16	16	16	20
PAGE RIGHT 1	Max Polyphony	01	05	01	01	08	08	08	08	01	01	01	01
PAGE LEFT 1	Offset	+02	-30	+30	+02	-06	+00	-11	-09	+00	+00	+00	+00
TRIGGER MODE	Select Trigger Mode	Re-Trigger	Re-trig Sustain	Re-Trigger	Re-Trigger	On/Off	On/Off	On/Off	On/Off	Re-Trigger	Re-Trigger	Re-Trigger	Re-Trigger
PAGE RIGHT 1	Gate Time	0.2s	0.2s	0.2s	0.2s	0.2s	0.2s	0.2s	0.2s	0.2s	0.2s	0.2s	0.2s
TRANPOSE	No. Semitones +/-	+00	+00	-24	+19	+00	+00	+00	+00	-24	+00	+00	+00
PAGE RIGHT 1	Play Direction	Reverse	Reverse	Forward	Reverse	Forward	Forward	Forward	Forward	Forward	Forward	Forward	Reverse
PAGE LEFT 1	Global	+12	+12	+12	+19	+12	+12	+12	+12	+12	+12	+12	+12
MIDI UTILITIES	MIDI Program Select	072	001	036	079	033	Off	Off	Off	120	012	001	023
PAGE RIGHT 1	Switch Monitor												
PAGE RIGHT 2	MIDI Bulk Dump												
PAGE RIGHT 3	Bulk Receive												
PAGE LEFT 1	MIDI Channel	01	02	03	04	10	10	10	10	09	11	12	13
PAGE LEFT 2	Start/Stop from												
PAGE LEFT 3	Realtime mode												
PAGE LEFT 4	MIDI Program Receive												

The settings for **Switches 1 to 4** are particularly suitable
for **On/Off Switches**

The settings for **Switches 5 to 8** are particularly suitable
for **Proportional Switches** (joysticks etc)

LOCKED SET-UPSSet-up No. **011** Set-up Name. **Tintagel**Composer / Arr. **Mark Newbold**

Date. 01/01/02

BUTTONS PAGE

SENSOR	Select Sensor	Beam 1	Beam 2	Beam 3	Beam 4	Switch 1	Switch 2	Switch 3	Switch 4	Switch 5	Switch 6	Switch 7	Switch 8
PAGE LEFT 1	Ctrl A Source	Rel Length		Speed	Abs Length	Speed	Speed	Speed	Voltage		Voltage		Speed
PAGE LEFT 2	Ctrl A Destination	001		065	091	Note Velocity	Note Velocity	Note Velocity	094		094		Note Velocity
PAGE LEFT 3	Ctrl A Depth	+050		+001	+099	+001	+002	+002	+002		+068		+076
PAGE LEFT 4	Ctrl A Minimum	000		065	064	045	045	045	127		000		033
PAGE RIGHT 1	Ctrl B Source	Speed	Rel Length	Abs Length	Abs Length	Voltage	Voltage	Voltage	Voltage	Voltage			Voltage
PAGE RIGHT 2	Ctrl B Destination	032	072	005	001	072	072	072	072	010			094
PAGE RIGHT 3	Ctrl B Depth	+001	+001	+001	+099	+001	+001	+002	+001	+065			+050
PAGE RIGHT 4	Ctrl B Minimum	040	127	021	000	122	122	122	127	000			000
PITCH SEQUENCE	PSQ Select	024 Tintagel Octave	024 Tintagel Octave	024 Tintagel Octave	024 Tintagel Octave	018 Chord Sequence	018 Chord Sequence	018 Chord Sequence	018 Chord Sequence	024 Tintagel Octave	024 Tintagel Octave	024 Tintagel Octave	024 Tintagel Octave
RANGE	Max. Range	Default	Default	Default	Default								
PAGE LEFT 1	Min. Range	Default	Default	Default	Default								
BEAM DIVISION	No. of Divisions	32	12	16	16	01	01	01	01	32	32	32	32
PAGE RIGHT 1	Max Polyphony	02	16	02	01	04	04	04	04	08	08	08	08
PAGE LEFT 1	Offset	+00	+00	+00	+00	+08	-35	-36	+00	+32	+00	+00	+00
TRIGGER MODE	Select Trigger Mode	Re-Trigger	Re-Trigger	Re-Trigger	Re-Trigger	On/Off	On/Off	On/Off	On/Off	Re-Trigger	Re-Trigger	Re-Trigger	Re-Trigger
PAGE RIGHT 1	Gate Time	0.2s	0.2s	0.2s	0.2s	0.2s	0.2s	0.2s	0.2s	0.2s	0.2s	0.2s	0.2s
TRANSCOPE	No. Semitones +/-	+24	+36	+24	+36	+12	+20	+13	+00	+36	+24	+36	+24
PAGE RIGHT 1	Play Direction	Forward	Forward	Reverse	Forward	Forward	Forward	Reverse	Forward	Forward	Forward	Forward	Reverse
PAGE LEFT 1	Global	-03	-03	-03	-03	-03	-03	-03	-03	-03	-03	-03	-03
MIDI UTILITIES	MIDI Program Select	055	090	049	080	098	098	098	123	047	027	057	012
PAGE RIGHT 1	Switch Monitor												
PAGE RIGHT 2	MIDI Bulk Dump												
PAGE RIGHT 3	Bulk Receive												
PAGE LEFT 1	MIDI Channel	02	02	03	04	05	06	07	08	09	11	12	13
PAGE LEFT 2	Start/Stop from												
PAGE LEFT 3	Realtime mode												
PAGE LEFT 4	MIDI Program Receive												

The settings for **Switches 1 to 4** are particularly suitable
for **On/Off Switches**The settings for **Switches 5 to 8** are particularly suitable
for **Proportional Switches** (joysticks etc)

Set-up No. **012**Set-up Name. **Gremlins**Composer / Arr. **Mark Newbold**

Date. 01/01/02

BUTTONS PAGE

SENSOR	Select Sensor	Beam 1	Beam 2	Beam 3	Beam 4	Switch 1	Switch 2	Switch 3	Switch 4	Switch 5	Switch 6	Switch 7	Switch 8
PAGE LEFT 1	Ctrl A Source	Gate	Speed	Gate	Abs Length	Gate	Gate	Gate	Gate		Gate		Voltage
PAGE LEFT 2	Ctrl A Destination	072	Note Velocity	007	074	032	032	032	032		065		072
PAGE LEFT 3	Ctrl A Depth	+001	+039	+001	+099	+001	+001	+001	+001		+002		+030
PAGE LEFT 4	Ctrl A Minimum	127	038	100	027	064	064	064	064		066		094
PAGE RIGHT 1	Ctrl B Source	Gate	Gate	Gate	Rel Length	Gate	Gate	Gate	Gate	Gate	Gate	Gate	Voltage
PAGE RIGHT 2	Ctrl B Destination	032	010	091	007	072	072	072	072	007	005		001
PAGE RIGHT 3	Ctrl B Depth	+001	+001	+001	+001	+001	+001	+001	+001	+001	+001		+058
PAGE RIGHT 4	Ctrl B Minimum	067	000	127	127	127	127	127	127	126	032		000
PITCH SEQUENCE	PSQ Select	009 Gapped Hexatonic	009 Gapped Hexatonic	009 Gapped Hexatonic	009 Gapped Hexatonic	009 Gapped Hexatonic	009 Gapped Hexatonic	009 Gapped Hexatonic	009 Gapped Hexatonic	009 Gapped Hexatonic	009 Gapped Hexatonic	009 Gapped Hexatonic	009 Gapped Hexatonic
RANGE	Max. Range	Default	Default	Default	Default								
PAGE LEFT 1	Min. Range	Default	Default	Default	Default								
BEAM DIVISION	No. of Divisions	32	16	16	16	01	01	01	01	08	17	28	16
PAGE RIGHT 1	Max Polyphony	08	08	08	08	08	08	08	08	08	08	08	08
PAGE LEFT 1	Offset	-16	-02	+00	-16	-23	-22	-12	-09	-01	+00	+00	+00
TRIGGER MODE	Select Trigger Mode	Re-Trigger	Re-Trigger	Re-Trigger	Re-Trigger	On/Off	On/Off	On/Off	On/Off	Re-Trigger	Re-Trigger	Re-Trigger	Re-Trigger
PAGE RIGHT 1	Gate Time	0.2s	0.2s	0.2s	0.2s	0.2s	0.2s	0.2s	0.2s	0.2s	0.2s	0.2s	0.2s
TRANSCOPE	No. Semitones +/-	+12	+00	+07	+12	+12	+12	+12	+12	+00	-12	+00	-24
PAGE RIGHT 1	Play Direction	Forward	Reverse	Forward	Reverse	Forward	Forward	Forward	Forward	Reverse	Reverse	Reverse	Forward
PAGE LEFT 1	Global	+12	+12	+12	+12	+12	+12	+12	+12	+12	+12	+12	+12
MIDI UTILITIES	MIDI Program Select	102	017	058	061	093	093	093	093	047	050	052	001
PAGE RIGHT 1	Switch Monitor												
PAGE RIGHT 2	MIDI Bulk Dump												
PAGE RIGHT 3	Bulk Receive												
PAGE LEFT 1	MIDI Channel	01	02	03	04	05	06	07	08	09	11	12	13
PAGE LEFT 2	Start/Stop from												
PAGE LEFT 3	Realtime mode												
PAGE LEFT 4	MIDI Program Receive												

The settings for **Switches 1 to 4** are particularly suitable
for **On/Off Switches**

The settings for **Switches 5 to 8** are particularly suitable
for **Proportional Switches** (joysticks etc)

LOCKED SET-UPSSet-up No. **013**Set-up Name. **Hitchcock**Composer / Arr. **Mark Newbold**

Date. 01/01/02

BUTTONS PAGE

SENSOR	Select Sensor	Beam 1	Beam 2	Beam 3	Beam 4	Switch 1	Switch 2	Switch 3	Switch 4	Switch 5	Switch 6	Switch 7	Switch 8
PAGE LEFT 1	Ctrl A Source	Rel Length	Rel Length	Speed						Voltage	Voltage	Voltage	Voltage
PAGE LEFT 2	Ctrl A Destination	093	001	093						010	071	093	093
PAGE LEFT 3	Ctrl A Depth	+100	+100	+001						+071	+100	+074	+002
PAGE LEFT 4	Ctrl A Minimum	000	127	000						000	000	070	113
PAGE RIGHT 1	Ctrl B Source	Speed	Rel Length	Rel Length						Voltage	Voltage	Voltage	Voltage
PAGE RIGHT 2	Ctrl B Destination	072	010	091						093	094	007	091
PAGE RIGHT 3	Ctrl B Depth	+100	+100	+100						+001	+100	+002	+001
PAGE RIGHT 4	Ctrl B Minimum	112	000	127						000	000	070	127
PITCH SEQUENCE	PSQ Select	009 Gapped Hexatonic	009 Gapped Hexatonic	009 Gapped Hexatonic	009 Gapped Hexatonic	009 Gapped Hexatonic	009 Gapped Hexatonic	009 Gapped Hexatonic	009 Gapped Hexatonic	009 Gapped Hexatonic	009 Gapped Hexatonic	009 Gapped Hexatonic	009 Gapped Hexatonic
RANGE	Max. Range	Default	Default	Default	Default								
PAGE LEFT 1	Min. Range	Default	Default	Default	Default								
BEAM DIVISION	No. of Divisions	64	64	16	32	01	01	01	01	16	32	32	32
PAGE RIGHT 1	Max Polyphony	08	08	08	08	08	08	08	08	08	08	08	08
PAGE LEFT 1	Offset	+00	+01	+00	-02	+00	+01	+02	+03	+00	+00	-01	-02
TRIGGER MODE	Select Trigger Mode	Re-Trigger	Re-Trigger	Re-Trigger	Re-Trigger	On/Off	On/Off	On/Off	On/Off	Re-Trigger	Re-Trigger	Re-Trigger	Re-Trigger
PAGE RIGHT 1	Gate Time	0.2s	0.2s	0.2s	0.2s	0.2s	0.2s	0.2s	0.2s	0.2s	0.2s	0.2s	0.2s
TRANPOSE	No. Semitones +/-	+00	+15	+07	+00	-12	-12	-12	-12	+00	+12	+12	+15
PAGE RIGHT 1	Play Direction	Forward	Forward	Forward	Forward	Forward	Forward	Forward	Forward	Forward	Forward	Reverse	Reverse
PAGE LEFT 1	Global	+00	+00	+00	+00	+00	+00	+00	+00	+00	+00	+00	+00
MIDI UTILITIES	MIDI Program Select	052	060	047	001	052	052	052	052	013	050	063	001
PAGE RIGHT 1	Switch Monitor												
PAGE RIGHT 2	MIDI Bulk Dump												
PAGE RIGHT 3	Bulk Receive												
PAGE LEFT 1	MIDI Channel	01	02	03	04	05	06	07	08	09	11	12	13
PAGE LEFT 2	Start/Stop from												
PAGE LEFT 3	Realtime mode												
PAGE LEFT 4	MIDI Program Receive												

The settings for **Switches 1 to 4** are particularly suitable
for **On/Off Switches**The settings for **Switches 5 to 8** are particularly suitable
for **Proportional Switches** (joysticks etc)

LOCKED SET-UPS

Set-up No. **014**

Set-up Name. **Blue Ming**

Composer / Arr. **Pete McPhail**

Date. 01/01/02

BUTTONS PAGE

SENSOR	Select Sensor	Beam 1	Beam 2	Beam 3	Beam 4	Switch 1	Switch 2	Switch 3	Switch 4	Switch 5	Switch 6	Switch 7	Switch 8
PAGE LEFT 1	Ctrl A Source												
PAGE LEFT 2	Ctrl A Destination												
PAGE LEFT 3	Ctrl A Depth												
PAGE LEFT 4	Ctrl A Minimum												
PAGE RIGHT 1	Ctrl B Source												
PAGE RIGHT 2	Ctrl B Destination												
PAGE RIGHT 3	Ctrl B Depth												
PAGE RIGHT 4	Ctrl B Minimum												
PITCH SEQUENCE	PSQ Select	025 Blueming Scale	025 Blueming Scale	025 Blueming Scale	025 Blueming Scale	025 Blueming Scale	025 Blueming Scale	025 Blueming Scale	025 Blueming Scale	025 Blueming Scale	025 Blueming Scale	025 Blueming Scale	025 Blueming Scale
RANGE	Max. Range	Default	Default	Default	Default								
PAGE LEFT 1	Min. Range	Default	Default	Default	Default								
BEAM DIVISION	No. of Divisions	28	14	09	04	01	01	01	01	16	04	04	02
PAGE RIGHT 1	Max Polyphony	08	08	08	08	02	02	02	02	08	08	08	08
PAGE LEFT 1	Offset	-11	-12	+08	+15	-06	-07	-01	-03	-08	-03	+23	+20
TRIGGER MODE	Select Trigger Mode	Re-Trigger	Re-Trigger	Re-Trigger	Re-Trigger	On/Off	On/Off	On/Off	On/Off	Gated Re-Trigger	Re-Trigger	Re-Trigger	Re-Trigger
PAGE RIGHT 1	Gate Time	0.2s	0.2s	0.2s	0.2s	0.2s	0.2s	0.2s	0.2s	0.2s	0.2s	0.2s	0.2s
TRANSCOPE	No. Semitones +/-	+00	+12	+00	+00	+00	+00	+00	+00	+00	+00	+00	+12
PAGE RIGHT 1	Play Direction	Forward	Forward	Forward	Forward	Forward	Forward	Forward	Forward	Forward	Forward	Forward	Forward
PAGE LEFT 1	Global	+12	+12	+12	+12	+12	+12	+12	+12	+12	+12	+12	+12
MIDI UTILITIES	MIDI Program Select	072	058	033	001	117	118	118	118	018	001	057	114
PAGE RIGHT 1	Switch Monitor												
PAGE RIGHT 2	MIDI Bulk Dump												
PAGE RIGHT 3	Bulk Receive												
PAGE LEFT 1	MIDI Channel	01	02	03	04	05	06	07	08	09	10	11	12
PAGE LEFT 2	Start/Stop from												
PAGE LEFT 3	Realtime mode												
PAGE LEFT 4	MIDI Program Receive												

The settings for **Switches 1 to 4** are particularly suitable for **On/Off Switches**

The settings for **Switches 5 to 8** are particularly suitable for **Proportional Switches** (joysticks etc)

LOCKED SET-UPS

Set-up No. **015**

Set-up Name. **Cine Dream**

Composer / Arr. **Pete McPhail**

Date. 01/01/02

BUTTONS PAGE

SENSOR	Select Sensor	Beam 1	Beam 2	Beam 3	Beam 4	Switch 1	Switch 2	Switch 3	Switch 4	Switch 5	Switch 6	Switch 7	Switch 8
PAGE LEFT 1	Ctrl A Source	Rel Length	Abs Length	Abs Length	Rel Length	Voltage	Voltage		Voltage				
PAGE LEFT 2	Ctrl A Destination	091	091	091	091	091	091		091				
PAGE LEFT 3	Ctrl A Depth	+071	+099	+080	+100	+088	+091		+084				
PAGE LEFT 4	Ctrl A Minimum	064	061	091	064	084	064		092				
PAGE RIGHT 1	Ctrl B Source												
PAGE RIGHT 2	Ctrl B Destination												
PAGE RIGHT 3	Ctrl B Depth												
PAGE RIGHT 4	Ctrl B Minimum												
PITCH SEQUENCE	PSQ Select	008 Whole Tone Scale	008 Whole Tone Scale	008 Whole Tone Scale	027 Cine Dream	008 Whole Tone Scale	027 Cine Dream	007 Pentatonic Scale	007 Pentatonic Scale	027 Cine Dream	027 Cine Dream	008 Whole Tone Scale	027 Cine Dream
RANGE	Max. Range	Default	Default	Default	Default								
PAGE LEFT 1	Min. Range	Default	Default	Default	Default								
BEAM DIVISION	No. of Divisions	16	16	16	24	01	12	16	01	16	16	16	16
PAGE RIGHT 1	Max Polyphony	08	08	08	08	08	08	08	08	08	08	08	08
PAGE LEFT 1	Offset	+00	-12	+00	+00	-12	+00	+00	-10	+00	+00	+00	+00
TRIGGER MODE	Select Trigger Mode	Re-Trigger	Re-Trigger	Re-Trigger	Re-Trigger	On/Off	Gated Re-Trigger	On/Off	On/Off	Re-Trigger	Re-Trigger	Gated Re-Trigger	Re-Trigger
PAGE RIGHT 1	Gate Time	0.2s	0.2s	0.2s	0.2s	0.2s	0.2s	0.2s	0.2s	0.2s	0.2s	0.2s	0.2s
TRANPOSE	No. Semitones +/-	+00	+00	+00	+00	+00	+00	+00	+00	-12	+00	+00	-24
PAGE RIGHT 1	Play Direction	Forward	Forward	Forward	Forward	Forward	Forward	Forward	Forward	Forward	Forward	Reverse	Forward
PAGE LEFT 1	Global	+00	+00	+00	+00	+00	+00	+00	+00	+00	+00	+00	+00
MIDI UTILITIES	MIDI Program Select	093	121	102	079	015	122	124	015	048	011	013	116
PAGE RIGHT 1	Switch Monitor												
PAGE RIGHT 2	MIDI Bulk Dump												
PAGE RIGHT 3	Bulk Receive												
PAGE LEFT 1	MIDI Channel	01	02	03	04	05	06	07	08	09	13	14	12
PAGE LEFT 2	Start/Stop from												
PAGE LEFT 3	Realtime mode												
PAGE LEFT 4	MIDI Program Receive												

The settings for **Switches 1 to 4** are particularly suitable for **On/Off Switches**

The settings for **Switches 5 to 8** are particularly suitable for **Proportional Switches** (joysticks etc)

Set-up No. **016**Set-up Name. **Outer Isles**Composer / Arr. **Mark Newbold**

Date. 01/01/02

BUTTONS

PAGE

SENSOR	Select Sensor	Beam 1	Beam 2	Beam 3	Beam 4	Switch 1	Switch 2	Switch 3	Switch 4	Switch 5	Switch 6	Switch 7	Switch 8
PAGE LEFT 1	Ctrl A Source		Speed	Rel Length		Speed	Speed	Speed	Speed	Voltage			
PAGE LEFT 2	Ctrl A Destination		091	070		Note Velocity	Note Velocity	Note Velocity	Note Velocity	094			
PAGE LEFT 3	Ctrl A Depth		+100	+002		+002	+002	+002	+002	+002			
PAGE LEFT 4	Ctrl A Minimum		121	127		080	080	080	080	124			
PAGE RIGHT 1	Ctrl B Source	Gate	Speed	Speed	Speed	Voltage	Voltage	Voltage	Voltage	Gate			Voltage
PAGE RIGHT 2	Ctrl B Destination	072	Note Velocity	Note Velocity	Note Velocity	072	072	072	072	091			094
PAGE RIGHT 3	Ctrl B Depth	+001	+026	+001	+001	+001	+001	+001	+001	+001			OFF
PAGE RIGHT 4	Ctrl B Minimum	127	064	076	064	127	127	127	127	119			046
PITCH SEQUENCE	PSQ Select	021 Snowy Night	021 Snowy Night	021 Snowy Night	021 Snowy Night	021 Snowy Night	021 Snowy Night	021 Snowy Night	021 Snowy Night	021 Snowy Night	021 Snowy Night	021 Snowy Night	021 Snowy Night
RANGE	Max. Range	Default	Default	Default	Default								
PAGE LEFT 1	Min. Range	Default	Default	Default	Default								
BEAM DIVISION	No. of Divisions	17	17	09	16	01	01	01	01	17	16	15	15
PAGE RIGHT 1	Max Polyphony	08	08	08	08	08	08	08	08	08	08	08	08
PAGE LEFT 1	Offset	+12	+12	+23	+10	+17	+16	+15	+13	+11	+09	+10	+10
TRIGGER MODE	Select Trigger Mode	Re-Trigger	Re-Trigger	Re-Trigger	Re-Trigger	On/Off	On/Off	On/Off	On/Off	Re-Trigger	Re-Trigger	Re-Trigger	Re-Trigger
PAGE RIGHT 1	Gate Time	0.2s	0.2s	0.2s	0.2s	0.2s	0.2s	0.2s	0.2s	0.2s	0.2s	0.2s	0.2s
TRANPOSE	No. Semitones +/-	+00	+12	-24	+12	+00	+00	+00	+00	+24	+12	+12	+12
PAGE RIGHT 1	Play Direction	Forward	Reverse	Reverse	Forward	Forward	Forward	Forward	Forward	Forward	Forward	Reverse	Forward
PAGE LEFT 1	Global	+00	+00	+00	+00	+00	+00	+00	+00	+00	+00	+00	+00
MIDI UTILITIES	MIDI Program Select	051	047	034	075	090	090	090	090	079	001	053	012
PAGE RIGHT 1	Switch Monitor												
PAGE RIGHT 2	MIDI Bulk Dump												
PAGE RIGHT 3	Bulk Receive												
PAGE LEFT 1	MIDI Channel	01	02	03	04	06	07	08	09	11	12	13	14
PAGE LEFT 2	Start/Stop from												
PAGE LEFT 3	Realtime mode												
PAGE LEFT 4	MIDI Program Receive												

The settings for **Switches 1 to 4** are particularly suitable
for **On/Off Switches**

The settings for **Switches 5 to 8** are particularly suitable
for **Proportional Switches** (joysticks etc)

Set-up No. **017**Set-up Name. **Pentaset 1**Composer / Arr. **Pete McPhail**

Date. 01/01/02

BUTTONS PAGE

SENSOR	Select Sensor	Beam 1	Beam 2	Beam 3	Beam 4	Switch 1	Switch 2	Switch 3	Switch 4	Switch 5	Switch 6	Switch 7	Switch 8
PAGE LEFT 1	Ctrl A Source	Gate	Gate		Speed								
PAGE LEFT 2	Ctrl A Destination	091	Chan Vol 007		Note Velocity								
PAGE LEFT 3	Ctrl A Depth	+001	+001		+001								
PAGE LEFT 4	Ctrl A Minimum	127	084		080								
PAGE RIGHT 1	Ctrl B Source	Gate											
PAGE RIGHT 2	Ctrl B Destination	093											
PAGE RIGHT 3	Ctrl B Depth	+001											
PAGE RIGHT 4	Ctrl B Minimum	127											
PITCH SEQUENCE	PSQ Select	007 Pentatonic Scale	019 Pentaset 1	007 Pentatonic Scale	019 Pentaset 1	007 Pentatonic Scale	007 Pentatonic Scale	007 Pentatonic Scale	007 Pentatonic Scale	007 Pentatonic Scale	007 Pentatonic Scale	007 Pentatonic Scale	007 Pentatonic Scale
RANGE	Max. Range	Default	Default	Default	Default								
PAGE LEFT 1	Min. Range	Default	Default	Default	Default								
BEAM DIVISION	No. of Divisions	16	05	16	16	16	16	16	16	16	16	16	16
PAGE RIGHT 1	Max Polyphony	08	08	08	08	08	08	08	08	08	08	08	08
PAGE LEFT 1	Offset	-02	+10	00	+20	00	00	00	00	00	00	00	00
TRIGGER MODE	Select Trigger Mode	Re-Trigger	Re-Trigger	Re-Trigger	Re-Trigger	On/Off	On/Off	On/Off	On/Off	On/Off	On/Off	On/Off	On/Off
PAGE RIGHT 1	Gate Time	0.2	0.2s	0.2s	0.2s	0.2s	0.2s	0.2s	0.2s	0.2s	0.2s	0.2s	0.2s
TRANSPOSE	No. Semitones +/-	+12	+12	+00	+12	-09	-02	+07	+12	+19	00	00	+07
PAGE RIGHT 1	Play Direction	Forward	Forward	Forward	Forward	Forward	Forward	Forward	Forward	Forward	Forward	Forward	Forward
PAGE LEFT 1	Global	+00	+00	+00	+00	+00	+00	+00	+00	+00	+00	+00	+00
MIDI UTILITIES	MIDI Program Select	076	055	001	050	090	090	090	090	090	001	048	048
PAGE RIGHT 1	Switch Monitor												
PAGE RIGHT 2	MIDI Bulk Dump												
PAGE RIGHT 3	Bulk Receive												
PAGE LEFT 1	MIDI Channel	01	02	03	04	05	06	07	08	09	10	11	12
PAGE LEFT 2	Start/Stop from												
PAGE LEFT 3	Realtime mode												
PAGE LEFT 4	MIDI Program Receive												

The settings for **Switches 1 to 4** are particularly suitable
for **On/Off Switches**

The settings for **Switches 5 to 8** are particularly suitable
for **Proportional Switches** (joysticks etc)

LOCKED SET-UPS

Set-up No. **018**

Set-up Name. **Pentaset 3**

Composer / Arr. **Pete McPhail**

Date. 01/01/02

BUTTONS PAGE

SENSOR	Select Sensor	Beam 1	Beam 2	Beam 3	Beam 4	Switch 1	Switch 2	Switch 3	Switch 4	Switch 5	Switch 6	Switch 7	Switch 8
PAGE LEFT 1	Ctrl A Source												
PAGE LEFT 2	Ctrl A Destination												
PAGE LEFT 3	Ctrl A Depth												
PAGE LEFT 4	Ctrl A Minimum												
PAGE RIGHT 1	Ctrl B Source												
PAGE RIGHT 2	Ctrl B Destination												
PAGE RIGHT 3	Ctrl B Depth												
PAGE RIGHT 4	Ctrl B Minimum												
PITCH SEQUENCE	PSQ Select	020 Pentaset 2	020 Pentaset 2	020 Pentaset 2	020 Pentaset 2	020 Pentaset 2	020 Pentaset 2	020 Pentaset 2	020 Pentaset 2	020 Pentaset 2	007 Pentatonic Scale	020 Pentaset 2	020 Pentaset 2
RANGE	Max. Range	Default	Default	Default	Default								
PAGE LEFT 1	Min. Range	Default	Default	Default	Default								
BEAM DIVISION	No. of Divisions	22	22	30	06	01	01	01	01	01	02	16	01
PAGE RIGHT 1	Max Polyphony	08	08	08	08	08	08	08	08	08	08	08	08
PAGE LEFT 1	Offset	-18	+18	+10	+27	-18	-23	-22	-20	+14	-03	-18	-20
TRIGGER MODE	Select Trigger Mode	Re-Trigger	Re-Trigger	Re-Tri Sustain	Re-Trigger	On/Off	On/Off	On/Off	On/Off	On/Off	Re-Trigger	On/Off	On/Off
PAGE RIGHT 1	Gate Time	0.2s	0.2s	0.2s	0.2s	0.2s	0.2s	0.2s	0.2s	0.2s	0.2s	0.2s	0.2s
TRANPOSE	No. Semitones +/-	+12	+12	+12	+12	+12	+12	+12	+12	+12	+00	+12	+12
PAGE RIGHT 1	Play Direction	Forward	Forward	Forward	Forward	Forward	Forward	Forward	Forward	Forward	Forward	Forward	Forward
PAGE LEFT 1	Global	+00	+00	+00	+00	+00	+00	+00	+00	+00	+00	+00	+00
MIDI UTILITIES	MIDI Program Select	011	074	012	089	103	103	103	103	114	001	114	114
PAGE RIGHT 1	Switch Monitor												
PAGE RIGHT 2	MIDI Bulk Dump												
PAGE RIGHT 3	Bulk Receive												
PAGE LEFT 1	MIDI Channel	01	02	03	04	05	06	07	08	09	10	11	12
PAGE LEFT 2	Start/Stop from												
PAGE LEFT 3	Realtime mode												
PAGE LEFT 4	MIDI Program Receive												

The settings for **Switches 1 to 4** are particularly suitable for **On/Off Switches**

The settings for **Switches 5 to 8** are particularly suitable for **Proportional Switches** (joysticks etc)

LOCKED SET-UPS

Set-up No. **019**

Set-up Name. **Pentaset 2**

Composer / Arr. **Pete McPhail**

Date. 01/01/02

BUTTONS PAGE

SENSOR	Select Sensor	Beam 1	Beam 2	Beam 3	Beam 4	Switch 1	Switch 2	Switch 3	Switch 4	Switch 5	Switch 6	Switch 7	Switch 8
PAGE LEFT 1	Ctrl A Source												
PAGE LEFT 2	Ctrl A Destination												
PAGE LEFT 3	Ctrl A Depth												
PAGE LEFT 4	Ctrl A Minimum												
PAGE RIGHT 1	Ctrl B Source												
PAGE RIGHT 2	Ctrl B Destination												
PAGE RIGHT 3	Ctrl B Depth												
PAGE RIGHT 4	Ctrl B Minimum												
PITCH SEQUENCE	PSQ Select	019 Pentaset 1	019 Pentaset 1	019 Pentaset 1	019 Pentaset 1	007 Pentatonic Scale	007 Pentatonic Scale	007 Pentatonic Scale	007 Pentatonic Scale	007 Pentatonic Scale	007 Pentatonic Scale	007 Pentatonic Scale	007 Pentatonic Scale
RANGE	Max. Range	Default	Default	Default	Default								
PAGE LEFT 1	Min. Range	Default	Default	Default	Default								
BEAM DIVISION	No. of Divisions	12	20	16	16	16	16	16	16	16	16	16	16
PAGE RIGHT 1	Max Polyphony	08	08	08	08	08	08	08	08	08	08	08	08
PAGE LEFT 1	Offset	-23	-03	-21	-01	+00	+07	+10	+16	+10	+00	+00	+16
TRIGGER MODE	Select Trigger Mode	Re-Trigger	Re-Trig Sustain	Re-Trigger	Re-Trigger	On/Off	On/Off	On/Off	On/Off	On/Off	On/Off	On/Off	On/Off
PAGE RIGHT 1	Gate Time	0.2s	0.2s	0.2s	0.2s	0.2s	0.2s	0.2s	0.2s	0.2s	0.2s	0.2s	0.2s
TRANSCOPE	No. Semitones +/-	+12	+12	+12	+12	+00	+00	+00	+00	+00	+00	+00	+00
PAGE RIGHT 1	Play Direction	Forward	Forward	Forward	Forward	Forward	Forward	Forward	Forward	Forward	Forward	Forward	Forward
PAGE LEFT 1	Global	+00	+00	+00	+00	+00	+00	+00	+00	+00	+00	+00	+00
MIDI UTILITIES	MIDI Program Select	108	097	073	078	117	117	117	117	117	001	117	117
PAGE RIGHT 1	Switch Monitor												
PAGE RIGHT 2	MIDI Bulk Dump												
PAGE RIGHT 3	Bulk Receive												
PAGE LEFT 1	MIDI Channel	01	02	03	04	05	06	07	08	09	10	11	12
PAGE LEFT 2	Start/Stop from												
PAGE LEFT 3	Realtime mode												
PAGE LEFT 4	MIDI Program Receive												

The settings for **Switches 1 to 4** are particularly suitable for **On/Off Switches**

The settings for **Switches 5 to 8** are particularly suitable for **Proportional Switches** (joysticks etc)

Set-up No. **020**Set-up Name. **New York Blues**Composer / Arr. **Tim Swingler**

Date. 01/01/02

BUTTONS PAGE

SENSOR	Select Sensor	Beam 1	Beam 2	Beam 3	Beam 4	Switch 1	Switch 2	Switch 3	Switch 4	Switch 5	Switch 6	Switch 7	Switch 8
PAGE LEFT 1	Ctrl A Source	Speed	Abs Length	Gate	Gate	Voltage	Voltage	Voltage	Voltage	Speed	Voltage		Speed
PAGE LEFT 2	Ctrl A Destination	Note Velocity	Expressn 011	Chan Vol 007	Chan Vol 007	Pitch Bend	Mod Wheel 001	Mod Wheel 001	072	Note Velocity	Pan Pos 010		Note Velocity
PAGE LEFT 3	Ctrl A Depth	+100	+100	+001	+001	+073	+089	+100	+001	+001	+100		+001
PAGE LEFT 4	Ctrl A Minimum	050	065	125	127	000	000	000	127	100	000		113
PAGE RIGHT 1	Ctrl B Source		Rel Length							Voltage			Voltage
PAGE RIGHT 2	Ctrl B Destination		Pan Pos 010							032			032
PAGE RIGHT 3	Ctrl B Depth		+090							+001			+001
PAGE RIGHT 4	Ctrl B Minimum		000							066			065
PITCH SEQUENCE	PSQ Select	026 Synth Dream	025 Blueming Scale	026 Synth Dream	026 Synth Dream	030 Blank Scale	030 Blank Scale	030 Blank Scale	017 Pentatonic Scale	026 Synth Dream	026 Synth Dream	027 Synth Dream	026 Synth Dream
RANGE	Max. Range	Default	Default	Default	Default								
PAGE LEFT 1	Min. Range	Default	Default	Default	Default								
BEAM DIVISION	No. of Divisions	32	16	32	16	01	01	01	01	16	16	16	16
PAGE RIGHT 1	Max Polyphony	08	06	08	08	08	08	08	08	08	08	08	02
PAGE LEFT 1	Offset	+16	+25	+16	+16	+00	+00	+00	+00	+17	+17	+17	+17
TRIGGER MODE	Select Trigger Mode	Re-Trigger	Re-Trigger Sustain	Re-Trigger	Re-Trigger	Controller Only	Controller Only	Controller Only	On/Off	Re-Trigger	Re-Trigger	Re-Trigger	Re-Trigger
PAGE RIGHT 1	Gate Time	0.2s	0.2s	0.2s	0.2s	0.2s	0.2s	0.2s	0.2	0.2s	0.2s	0.2s	0.2s
TRANSCOPE	No. Semitones +/-	+00	-02	+07	+00	+00	+00	+00	-14	+12	+12	+19	+00
PAGE RIGHT 1	Play Direction	Forward	Reverse	Reverse	Reverse	Forward	Forward	Forward	Forward	Reverse	Forward	Reverse	Forward
PAGE LEFT 1	Global	-03	-03	-03	-03	-03	-03	-03	-03	-03	-03	-03	-03
MIDI UTILITIES	MIDI Program Select	067	090	001	036	off	off	off	120	092	023	074	094
PAGE RIGHT 1	Switch Monitor												
PAGE RIGHT 2	MIDI Bulk Dump												
PAGE RIGHT 3	Bulk Receive												
PAGE LEFT 1	MIDI Channel	01	02	03	04	02	03	04	05	06	07	08	09
PAGE LEFT 2	Start/Stop from												
PAGE LEFT 3	Realtime mode												
PAGE LEFT 4	MIDI Program Receive												

The settings for **Switches 1 to 4** are particularly suitable for **On/Off Switches**The settings for **Switches 5 to 8** are particularly suitable for **Proportional Switches** (joysticks etc)

Set-up No. **021**Set-up Name. **Arabian Knights**Composer / Arr. **Tim Swingler**

Date. 01/01/02

BUTTONS PAGE

SENSOR	Select Sensor	Beam 1	Beam 2	Beam 3	Beam 4	Switch 1	Switch 2	Switch 3	Switch 4	Switch 5	Switch 6	Switch 7	Switch 8
PAGE LEFT 1	Ctrl A Source	Speed	Rel Length	Gate		Voltage				Voltage	Voltage		Voltage
PAGE LEFT 2	Ctrl A Destination	Portmnto005	Pan Pos 010	065		Mod Wheel 001				065	065		
PAGE LEFT 3	Ctrl A Depth	+100	+050	+001		+094				+001	+001		OFF
PAGE LEFT 4	Ctrl A Minimum	000	040	079		000				075	078		127
PAGE RIGHT 1	Ctrl B Source	Gate	Rel Length				Voltage	Voltage	Voltage	Voltage	Voltage		Voltage
PAGE RIGHT 2	Ctrl B Destination	065	Chan Vol 007				Pitch Bend	Mod Wheel 001	Mod Wheel 001	Portmnto005	Portmnto005		072
PAGE RIGHT 3	Ctrl B Depth	+001	+001				+100	+100	+100	+062	+001		+001
PAGE RIGHT 4	Ctrl B Minimum	070	090				000	000	000	000	078		127
PITCH SEQUENCE	PSQ Select	011 Harmonic Minor	027 Cine Dream	011 Harmonic Minor	011 Harmonic Minor	011 Harmonic Minor	030 Blank Scale	030 Blank Scale	030 Blank Scale	011 Harmonic Minor	011 Harmonic Minor	011 Harmonic Minor	011 Harmonic Minor
RANGE	Max. Range	Default	Default	Default	Default								
PAGE LEFT 1	Min. Range	Default	Default	Default	Default								
BEAM DIVISION	No. of Divisions	16	07	16	08	02	02	02	02	16	16	16	16
PAGE RIGHT 1	Max Polyphony	08	08	08	08	08	08	08	08	08	08	08	08
PAGE LEFT 1	Offset	-02	+28	-02	-09	+00	+00	+00	+00	+01	+00	+00	-02
TRIGGER MODE	Select Trigger Mode	Re-Trigger	Poly Sustain	Re-Trigger	Re-Trigger	Controller Only	Controller Only	Controller Only	Controller Only	Re-Trigger	Re-Trigger	Re-Trigger	Re-Trigger
PAGE RIGHT 1	Gate Time	0.2s	0.2s	0.2s	0.2s	0.2s	0.2s	0.2s	0.2s	0.2s	0.2s	0.2s	0.2s
TRANPOSE	No. Semitones +/-	+00	+12	+00	-12	+00	+00	+00	+00	+12	+12	+00	-36
PAGE RIGHT 1	Play Direction	Forward	Forward	Reverse	Reverse	Forward	Forward	Forward	Forward	Reverse	Reverse	Forward	Forward
PAGE LEFT 1	Global	+00	+00	+00	+00	+00	+00	+00	+00	+00	+00	+00	+00
MIDI UTILITIES	MIDI Program Select	112	096	065	033	off	off	off	off	044	054	001	123
PAGE RIGHT 1	Switch Monitor												
PAGE RIGHT 2	MIDI Bulk Dump												
PAGE RIGHT 3	Bulk Receive												
PAGE LEFT 1	MIDI Channel	01	02	03	04	01	02	03	04	09	11	12	13
PAGE LEFT 2	Start/Stop from												
PAGE LEFT 3	Realtime mode												
PAGE LEFT 4	MIDI Program Receive												

The settings for **Switches 1 to 4** are particularly suitable
for **On/Off Switches**

The settings for **Switches 5 to 8** are particularly suitable
for **Proportional Switches** (joysticks etc)

LOCKED SET-UPS

Set-up No. **022**

Set-up Name. **Sound Switch**

Composer / Arr. **Mark Newbold**

Date. 01/01/02

BUTTONS PAGE

SENSOR	Select Sensor	Beam 1	Beam 2	Beam 3	Beam 4	Switch 1	Switch 2	Switch 3	Switch 4	Switch 5	Switch 6	Switch 7	Switch 8
PAGE LEFT 1	Ctrl A Source		Gate			Voltage							
PAGE LEFT 2	Ctrl A Destination		Chan Vol 007										
PAGE LEFT 3	Ctrl A Depth		+001			+094							
PAGE LEFT 4	Ctrl A Minimum		076			000							
PAGE RIGHT 1	Ctrl B Source	Rel Length	Rel Length										
PAGE RIGHT 2	Ctrl B Destination	Pan Pos 010	Mod Wheel 001										
PAGE RIGHT 3	Ctrl B Depth	+100	+100										
PAGE RIGHT 4	Ctrl B Minimum	000	000										
PITCH SEQUENCE	PSQ Select	026 Synth Dream	026 Synth Dream	026 Synth Dream	026 Synth Dream	028 Prog Seq Even	028 Prog Seq Even	028 Prog Seq Even	029 Prog Seq Odd	029 Prog Seq Odd	028 Prog Seq Even	029 Prog Seq Odd	030 Blank Scale
RANGE	Max. Range	Default	Default	Default	Default								
PAGE LEFT 1	Min. Range	Default	Default	Default	Default								
BEAM DIVISION	No. of Divisions	16	08	27	13	01	01	01	01	01	01	01	01
PAGE RIGHT 1	Max Polyphony	01	08	01	01	01	01	01	01	01	01	01	01
PAGE LEFT 1	Offset	+19	-03	+14	+18	+15	+20	-06	+16	+08	+00	-15	-13
TRIGGER MODE	Select Trigger Mode	Re-Trigger	Re-Trigger	Re-Trigger	Re-Trigger	On/Off	On/Off	On/Off	On/Off	On/Off	On/Off	On/Off	On/Off
PAGE RIGHT 1	Gate Time	0.2s	0.2s	0.2s	0.2s	0.2s	0.2s	0.2s	0.2s	0.2s	0.2s	0.2s	0.2s
TRANSCOPE	No. Semitones +/-	+00	+00	+07	-24	+00	+00	+00	+00	+00	+00	+00	+00
PAGE RIGHT 1	Play Direction	Forward	Forward	Reverse	Reverse	Forward	Forward	Forward	Forward	Reverse	Reverse	Forward	Forward
PAGE LEFT 1	Global	+12	+12	+12	+12	+12	+12	+12	+12	+12	+12	+12	+12
MIDI UTILITIES	MIDI Program Select	095	051	080	036	off	off	off	off	off	off	off	off
PAGE RIGHT 1	Switch Monitor												
PAGE RIGHT 2	MIDI Bulk Dump												
PAGE RIGHT 3	Bulk Receive												
PAGE LEFT 1	MIDI Channel	01	02	03	04	01	01	02	02	03	03	04	04
PAGE LEFT 2	Start/Stop from												
PAGE LEFT 3	Realtime mode												
PAGE LEFT 4	MIDI Program Receive												

The settings for **Switches 1 to 4** are particularly suitable for **On/Off Switches**

The settings for **Switches 5 to 8** are particularly suitable for **Proportional Switches** (joysticks etc)

Set-up No. **023**Set-up Name. **Africa**Composer / Arr. **Mark Newbold**

Date. 01/01/02

BUTTONS PAGE

SENSOR	Select Sensor	Beam 1	Beam 2	Beam 3	Beam 4	Switch 1	Switch 2	Switch 3	Switch 4	Switch 5	Switch 6	Switch 7	Switch 8
PAGE LEFT 1	Ctrl A Source	Gate	Gate								Gate		
PAGE LEFT 2	Ctrl A Destination	072	072								072		
PAGE LEFT 3	Ctrl A Depth	+001	+001								+001		
PAGE LEFT 4	Ctrl A Minimum	127	127								127		
PAGE RIGHT 1	Ctrl B Source	Gate	Gate	Gate	Gate	Gate	Voltage			Voltage	Gate	Gate	
PAGE RIGHT 2	Ctrl B Destination	032	032	032	032	032	032			Pan Pos 010	032	032	
PAGE RIGHT 3	Ctrl B Depth	+001	+001	+001	+001	-001	+001			+065	+001	+001	
PAGE RIGHT 4	Ctrl B Minimum	064	065	097	096	098	067			000	096	065	
PITCH SEQUENCE	PSQ Select	027 Cine Dream	027 Cine Dream	027 Cine Dream	027 Cine Dream	027 Cine Dream	027 Cine Dream	027 Cine Dream	027 Cine Dream	017 Chromatic Scale	017 Chromatic Scale	017 Chromatic Scale	017 Chromatic Scale
RANGE	Max. Range	Default	Default	Default	Default								
PAGE LEFT 1	Min. Range	Default	Default	Default	Default								
BEAM DIVISION	No. of Divisions	04	04	08	08	16	01	01	01	02	08	16	08
PAGE RIGHT 1	Max Polyphony	08	08	08	08	08	08	08	08	08	08	08	08
PAGE LEFT 1	Offset	+00	+00	+00	+00	+00	+00	+01	+02	+09	-08	-16	+00
TRIGGER MODE	Select Trigger Mode	Re-Trigger	Re-Trigger	Re-Trigger	Re-Trigger	On/Off	On/Off	On/Off	On/Off	Re-Trigger	Re-Trigger	Re-Trigger	Re-Trigger
PAGE RIGHT 1	Gate Time	0.2s	0.2s	0.2s	0.2s	0.2s	0.2s	0.2s	0.2s	0.2s	0.2s	0.2s	0.2s
TRANPOSE	No. Semitones +/-	-12	+00	-12	-07	-24	-24	-24	-24	+00	+19	+24	+00
PAGE RIGHT 1	Play Direction	Forward	Reverse	Forward	Reverse	Forward	Forward	Forward	Reverse	Forward	Reverse	Forward	Reverse
PAGE LEFT 1	Global	+00	+00	+00	+00	+00	+00	+00	+00	+00	+00	+00	+00
MIDI UTILITIES	MIDI Program Select	097	097	013	013	113	118	off	off	001	102	090	102
PAGE RIGHT 1	Switch Monitor												
PAGE RIGHT 2	MIDI Bulk Dump												
PAGE RIGHT 3	Bulk Receive												
PAGE LEFT 1	MIDI Channel	01	02	03	04	05	06	06	06	10	09	11	12
PAGE LEFT 2	Start/Stop from												
PAGE LEFT 3	Realtime mode												
PAGE LEFT 4	MIDI Program Receive												

The settings for **Switches 1 to 4** are particularly suitable
for **On/Off Switches**The settings for **Switches 5 to 8** are particularly suitable
for **Proportional Switches** (joysticks etc)

Set-up No. **024**Set-up Name. **Haunted House**Composer / Arr. **Mark Newbold**

Date. 01/01/02

BUTTONS PAGE

SENSOR	Select Sensor	Beam 1	Beam 2	Beam 3	Beam 4	Switch 1	Switch 2	Switch 3	Switch 4	Switch 5	Switch 6	Switch 7	Switch 8
PAGE LEFT 1	Ctrl A Source	Speed	Gate	Rel Length	Gate	Gate	Speed	Speed		Speed	Gate	Gate	Speed
PAGE LEFT 2	Ctrl A Destination	Note Velocity	032	Pitch Bend	091	Chan Vol 007	Note Velocity	Note Velocity		Note Velocity	072	072	Note Velocity
PAGE LEFT 3	Ctrl A Depth	+001	+001	+025	+001	+001	+001	+001		+001	+001	+068	+001
PAGE LEFT 4	Ctrl A Minimum	119	063	000	127	127	112	098		090	121	114	110
PAGE RIGHT 1	Ctrl B Source	Gate	Gate	Gate	Gate	Gate	Gate	Gate	Gate	Gate	Gate	Gate	Gate
PAGE RIGHT 2	Ctrl B Destination	Bank Select 000	072	032	Bank Select 000	Bank Select 000	Bank Select 000	Bank Select 000	Bank Select 000	Bank Select 000	Bank Select 000	Bank Select 000	Bank Select 000
PAGE RIGHT 3	Ctrl B Depth	+001	+001	+001	+001	+001	+001	+001		+001	+001	+001	+001
PAGE RIGHT 4	Ctrl B Minimum	063	127	065	063	064	064	064	064	064	064	064	064
PITCH SEQUENCE	PSQ Select	003 Maj Tri,7,9,11	018 Chord Sequence	003 Maj Tri,7,9,11	003 Maj Tri,7,9,11	003 Maj Tri,7,9,11	003 Maj Tri,7,9,11	003 Maj Tri,7,9,11	003 Maj Tri,7,9,11	003 Maj Tri,7,9,11	003 Maj Tri,7,9,11	003 Maj Tri,7,9,11	003 Maj Tri,7,9,11
RANGE	Max. Range	Default	Default	Default	Default								
PAGE LEFT 1	Min. Range	Default	Default	Default	Default								
BEAM DIVISION	No. of Divisions	08	04	01	08	01	01	01	01	02	08	04	04
PAGE RIGHT 1	Max Polyphony	08	08	08	08	08	08	08	08	08	08	08	08
PAGE LEFT 1	Offset	+04	+00	+04	+04	+00	+00	+03	+01	+00	+04	+08	+02
TRIGGER MODE	Select Trigger Mode	Re-Trigger	Re-Trigger	Re-Trigger	Re-Trigger	On/Off	On/Off	On/Off	On/Off	Re-Trigger	Re-Trigger	Re-Trigger	Re-Trigger
PAGE RIGHT 1	Gate Time	0.2s	0.2s	0.2s	0.2s	0.2s	0.2s	0.2s	0.2s	0.2s	0.2s	0.2s	0.2s
TRANPOSE	No. Semitones +/-	+31	+13	+25	-13	-11	-11	-11	-36	-36	-01	+36	+24
PAGE RIGHT 1	Play Direction	Forward	Forward	Forward	Forward	Forward	Forward	Forward	Forward	Forward	Forward	Forward	Forward
PAGE LEFT 1	Global	+00	+00	+00	+00	+00	+00	+00	+00	+00	+00	+00	+00
MIDI UTILITIES	MIDI Program Select	055	098	081	097	066	067	034	033	101	085	091	100
PAGE RIGHT 1	Switch Monitor												
PAGE RIGHT 2	MIDI Bulk Dump												
PAGE RIGHT 3	Bulk Receive												
PAGE LEFT 1	MIDI Channel	01	02	03	04	05	06	07	08	09	11	12	13
PAGE LEFT 2	Start/Stop from												
PAGE LEFT 3	Realtime mode												
PAGE LEFT 4	MIDI Program Receive												

The settings for **Switches 1 to 4** are particularly suitable
for **On/Off Switches**

The settings for **Switches 5 to 8** are particularly suitable
for **Proportional Switches** (joysticks etc)

LOCKED SET-UPSSet-up No. **025**Set-up Name. **Science Fiction**Composer / Arr. **Mark Newbold**

Date. 01/01/02

BUTTONS PAGE

SENSOR	Select Sensor	Beam 1	Beam 2	Beam 3	Beam 4	Switch 1	Switch 2	Switch 3	Switch 4	Switch 5	Switch 6	Switch 7	Switch 8
PAGE LEFT 1	Ctrl A Source	Rel Length	Gate	Speed		Voltage	Voltage	Voltage	Voltage	Voltage	Voltage	Voltage	Gate
PAGE LEFT 2	Ctrl A Destination	Mod Wheel 001	Chan Vol 007	Note Velocity		072	072	Pan Pos 010	072	072	Pan Pos 010	072	072
PAGE LEFT 3	Ctrl A Depth	+100	+001	+001		+001	+001	+060	+001	+001	+086	+001	+001
PAGE LEFT 4	Ctrl A Minimum	077	080	090		127	127	000	126	127	000	102	099
PAGE RIGHT 1	Ctrl B Source	Rel Length	Gate	Gate	Rel Length	Gate	Gate	Voltage	Gate	Gate	Gate	Gate	Gate
PAGE RIGHT 2	Ctrl B Destination	Pitch Bend	032	032		Bank Select 000	Bank Select 000	Bank Select 000	Bank Select 000	Bank Select 000	Bank Select 000	Bank Select 000	Bank Select 000
PAGE RIGHT 3	Ctrl B Depth	+025	+001	+001	+001	+001	+001	+001	+001	+001	+001	+001	+001
PAGE RIGHT 4	Ctrl B Minimum	064	067	064	064	064	064	064	064	064	064	064	064
PITCH SEQUENCE	PSQ Select	001 Arp.Major Triad	018 Chord Sequence	001 Arp.Major Triad	005 Major Triad+6th	017 Chromatic Scale	017 Chromatic Scale	001 Arp.Major Triad	017 Chromatic Scale	017 Chromatic Scale	017 Chromatic Scale	017 Chromatic Scale	017 Chromatic Scale
RANGE	Max. Range	Default	Default	Default	Default								
PAGE LEFT 1	Min. Range	Default	Default	Default	Default								
BEAM DIVISION	No. of Divisions	01	04	08	16	01	32	32	16	01	02	02	03
PAGE RIGHT 1	Max Polyphony	08	08	08	08	08	08	08	08	08	08	08	08
PAGE LEFT 1	Offset	+00	+30	-02	+16	+00	+00	+00	+36	+00	-36	-36	~+00
TRIGGER MODE	Select Trigger Mode	Re-Trigger	Re-Trigger	Re-Trigger	Re-Trigger	On/Off	On/Off	Re-Trigger	Re-Trigger	On/Off	Re-Trigger	Re-Trigger	Re-Trigger
PAGE RIGHT 1	Gate Time	0.2s	0.2s	0.2s	0.2s	0.2s	0.2s	0.2s	0.2s	0.2s	0.2s	0.2s	0.2s
TRANSCOPE	No. Semitones +/-	+10	+22	+10	+10	-24	-36	-34	+36	+24	-36	-36	-36
PAGE RIGHT 1	Play Direction	Forward	Forward	Reverse	Forward	Forward	Forward	Forward	Forward	Forward	Forward	Forward	Forward
PAGE LEFT 1	Global	+00	+00	+00	+00	+00	+00	+00	+00	+00	+00	+00	+00
MIDI UTILITIES	MIDI Program Select	080	103	090	080	085	088	017	038	090	114	116	115
PAGE RIGHT 1	Switch Monitor												
PAGE RIGHT 2	MIDI Bulk Dump												
PAGE RIGHT 3	Bulk Receive												
PAGE LEFT 1	MIDI Channel	01	02	03	04	05	06	07	08	09	11	12	13
PAGE LEFT 2	Start/Stop from												
PAGE LEFT 3	Realtime mode												
PAGE LEFT 4	MIDI Program Receive												

The settings for **Switches 1 to 4** are particularly suitable
for **On/Off Switches**The settings for **Switches 5 to 8** are particularly suitable
for **Proportional Switches** (joysticks etc)

Set-up No. **026**Set-up Name. **Mystery**Composer / Arr. **Mark Newbold**

Date. 01/01/02

BUTTONS PAGE

SENSOR	Select Sensor	Beam 1	Beam 2	Beam 3	Beam 4	Switch 1	Switch 2	Switch 3	Switch 4	Switch 5	Switch 6	Switch 7	Switch 8
PAGE LEFT 1	Ctrl A Source	Rel Length			Gate			Voltage		Speed	Voltage		
PAGE LEFT 2	Ctrl A Destination	073			072			074		Note Velocity	072		
PAGE LEFT 3	Ctrl A Depth	+001			+001			+001		+001	+001		
PAGE LEFT 4	Ctrl A Minimum	028			116			127		055	094		
PAGE RIGHT 1	Ctrl B Source	Gate	Gate	Gate	Gate	Gate	Gate	Gate	Gate	Gate	GATE		
PAGE RIGHT 2	Ctrl B Destination	032	032	032	032	Bank Select 000	Bank Select 000	Bank Select 000	Bank Select 000	032	032		
PAGE RIGHT 3	Ctrl B Depth	+001	+001	+001	+001	+001	+001	+001	+001	+001	+032		
PAGE RIGHT 4	Ctrl B Minimum	065	065	017	039	064	064	064	064	069	041		
PITCH SEQUENCE	PSQ Select	025 Blueming Scale	025 Blueming Scale	025 Blueming Scale	025 Blueming Scale	007 Pentatonic Scale	007 Pentatonic Scale	007 Pentatonic Scale	007 Pentatonic Scale	025 Blueming Scale	025 Blueming Scale	025 Blueming Scale	025 Blueming Scale
RANGE	Max. Range	Default	Default	Default	Default								
PAGE LEFT 1	Min. Range	Default	Default	Default	Default								
BEAM DIVISION	No. of Divisions	28	04	28	04	01	01	24	12	04	14	14	14
PAGE RIGHT 1	Max Polyphony	08	08	08	08	08	08	08	08	08	08	08	08
PAGE LEFT 1	Offset	-11	+22	-11	+22	-06	-07	-01	-03	+22	-12	-12	-10
TRIGGER MODE	Select Trigger Mode	Re-Trigger	Re-Trigger	Re-Trigger	Re-Trigger	On/Off	On/Off	Re-Trigger	Re-Trigger	Re-Trigger	Re-Trigger	Re-Trigger	Re-Trigger
PAGE RIGHT 1	Gate Time	0.2s	0.2s	0.2s	0.2s	0.2s	0.2s	0.2s	0.2s	0.2s	0.2s	0.2s	0.2s
TRANSCOPE	No. Semitones +/-	+12	+12	+07	+12	+12	-12	-24	-36	+12	+19	+00	+07
PAGE RIGHT 1	Play Direction	Forward	Forward	Reverse	Reverse	Forward	Forward	Forward	Reverse	Reverse	Reverse	Forward	Reverse
PAGE LEFT 1	Global	+00	+00	+00	+00	+00	+00	+00	+00	+00	+00	+00	+00
MIDI UTILITIES	MIDI Program Select	096	092	090	050	100	101	070	051	103	001	058	115
PAGE RIGHT 1	Switch Monitor												
PAGE RIGHT 2	MIDI Bulk Dump												
PAGE RIGHT 3	Bulk Receive												
PAGE LEFT 1	MIDI Channel	01	02	03	04	05	06	07	08	09	11	12	13
PAGE LEFT 2	Start/Stop from												
PAGE LEFT 3	Realtime mode												
PAGE LEFT 4	MIDI Program Receive												

The settings for **Switches 1 to 4** are particularly suitable
for **On/Off Switches**

The settings for **Switches 5 to 8** are particularly suitable
for **Proportional Switches** (joysticks etc)

Set-up No. **027**Set-up Name. **Glastonbury Bells**Composer / Arr. **Mark Newbold**

Date. 01/01/02

BUTTONS PAGE

SENSOR	Select Sensor	Beam 1	Beam 2	Beam 3	Beam 4	Switch 1	Switch 2	Switch 3	Switch 4	Switch 5	Switch 6	Switch 7	Switch 8
PAGE LEFT 1	Ctrl A Source	Gate	Gate	Gate	Gate	Gate							Voltage
PAGE LEFT 2	Ctrl A Destination	032	032	Chan Vol 007	032	072							072
PAGE LEFT 3	Ctrl A Depth	+001	+001	+001	+001	+119							+001
PAGE LEFT 4	Ctrl A Minimum	095	002	092	063	000							108
PAGE RIGHT 1	Ctrl B Source	Gate	Gate	Gate		Gate	Gate	Gate	Voltage	Gate			Gate
PAGE RIGHT 2	Ctrl B Destination	072	093	032		032	032	032	032	032			032
PAGE RIGHT 3	Ctrl B Depth	+001	+001	+001		+001	+001	+001	+001	+001			+001
PAGE RIGHT 4	Ctrl B Minimum	115	127	039		042	042	042	041	041			095
PITCH SEQUENCE	PSQ Select	018 Chord Sequence	007 Pentatonic Scale	007 Pentatonic Scale	007 Pentatonic Scale	018 Chord Sequence	018 Chord Sequence	018 Chord Sequence	018 Chord Sequence	007 Pentatonic Scale	007 Pentatonic Scale	007 Pentatonic Scale	007 Pentatonic Scale
RANGE	Max. Range	Default	Default	Default	Default								
PAGE LEFT 1	Min. Range	Default	Default	Default	Default								
BEAM DIVISION	No. of Divisions	08	08	08	17	01	01	01	01	17	08	16	08
PAGE RIGHT 1	Max Polyphony	24	08	08	08	08	08	08	08	08	08	08	08
PAGE LEFT 1	Offset	+20	+26	+00	+00	+24	+24	+25	+25	+00	+00	+16	+00
TRIGGER MODE	Select Trigger Mode	Re-Trigger	Re-Trigger	Re-Trig Sustain	Re-Trig Sustain	On/Off	On/Off	On/Off	On/Off	Re-Trigger	Re-Trigger	Re-Trigger	Re-Trigger
PAGE RIGHT 1	Gate Time	0.2s	0.2s	0.2s	0.2s	0.2s	0.2s	0.2s	0.2s	0.2s	0.2s	0.2s	0.2s
TRANPOSE	No. Semitones +/-	+12	-24	+00	+07	+00	+07	+12	+19	+07	+00	-12	+00
PAGE RIGHT 1	Play Direction	Reverse	Forward	Reverse	Forward	Forward	Forward	Forward	Forward	Forward	Reverse	Reverse	Reverse
PAGE LEFT 1	Global	+00	+00	+00	+00	+00	+00	+00	+00	+00	+00	+00	+00
MIDI UTILITIES	MIDI Program Select	015	053	099	011	099	099	099	099	001	053	079	015
PAGE RIGHT 1	Switch Monitor												
PAGE RIGHT 2	MIDI Bulk Dump												
PAGE RIGHT 3	Bulk Receive												
PAGE LEFT 1	MIDI Channel	01	02	03	04	05	06	07	08	09	11	12	13
PAGE LEFT 2	Start/Stop from												
PAGE LEFT 3	Realtime mode												
PAGE LEFT 4	MIDI Program Receive												

The settings for **Switches 1 to 4** are particularly suitable
for **On/Off Switches**

The settings for **Switches 5 to 8** are particularly suitable
for **Proportional Switches** (joysticks etc)

LOCKED SET-UPS

Set-up No. **028**

Set-up Name. **Dorians**

Composer / Arr. **Mark Newbold**

Date. 01/01/02

BUTTONS PAGE

SENSOR	Select Sensor	Beam 1	Beam 2	Beam 3	Beam 4	Switch 1	Switch 2	Switch 3	Switch 4	Switch 5	Switch 6	Switch 7	Switch 8
PAGE LEFT 1	Ctrl A Source	Rel Length	Gate	Rel Length		Speed	Speed	Speed	Speed	Voltage			
PAGE LEFT 2	Ctrl A Destination	074	072	070		Note Velocity	Note Velocity	Note Velocity	Note Velocity	094			
PAGE LEFT 3	Ctrl A Depth	+001	+001	+001		+001	+001	+001	+001	+001			
PAGE LEFT 4	Ctrl A Minimum	083	064	127		080	080	080	080	124			
PAGE RIGHT 1	Ctrl B Source	Gate	Gate	Speed	Speed	Voltage	Voltage	Voltage	Voltage	Gate			Voltage
PAGE RIGHT 2	Ctrl B Destination	032	032	Note Velocity	Note Velocity	072	072	072	072	091			094
PAGE RIGHT 3	Ctrl B Depth	+001	+001	+001	+001	+001	+001	+001	+001	+001			+001
PAGE RIGHT 4	Ctrl B Minimum	040	064	076	064	127	127	127	127	119			046
PITCH SEQUENCE	PSQ Select	013 Dorian Mode	018 Chord Sequence	021 Snowy Night	014 Lydian Mode	013 Dorian Mode	013 Dorian Mode	013 Dorian Mode	013 Dorian Mode	013 Dorian Mode	013 Dorian Mode	013 Dorian Mode	013 Dorian Mode
RANGE	Max. Range	Default	Default	Default	Default								
PAGE LEFT 1	Min. Range	Default	Default	Default	Default								
BEAM DIVISION	No. of Divisions	16	04	09	16	01	01	01	01	16	16	16	16
PAGE RIGHT 1	Max Polyphony	08	08	08	08	08	08	08	08	08	08	08	08
PAGE LEFT 1	Offset	+12	-31	+23	+10	+00	+01	+04	+05	+00	+00	+00	+10
TRIGGER MODE	Select Trigger Mode	Re-Trigger	Re-Trigger	Re-Trigger	Re-Trigger	On/Off	On/Off	On/Off	On/Off	Re-Trigger	Re-Trigger	Re-Trigger	Re-Trigger
PAGE RIGHT 1	Gate Time	0.2s	0.2s	0.2s	0.2s	0.2s	0.2s	0.2s	0.2s	0.2s	0.2s	0.2s	0.2s
TRANPOSE	No. Semitones +/-	-17	+10	-24	-02	+04	+04	+04	+04	+14	+12	+05	+07
PAGE RIGHT 1	Play Direction	Forward	Reverse	Reverse	Forward	Forward	Forward	Forward	Forward	Reverse	Reverse	Reverse	Forward
PAGE LEFT 1	Global	+05	+05	+05	+05	+05	+05	+05	+05	+05	+05	+05	+05
MIDI UTILITIES	MIDI Program Select	082	091	034	075	090	090	090	090	079	001	053	012
PAGE RIGHT 1	Switch Monitor												
PAGE RIGHT 2	MIDI Bulk Dump												
PAGE RIGHT 3	Bulk Receive												
PAGE LEFT 1	MIDI Channel	01	02	03	04	05	06	07	08	11	12	13	14
PAGE LEFT 2	Start/Stop from												
PAGE LEFT 3	Realtime mode												
PAGE LEFT 4	MIDI Program Receive												

The settings for **Switches 1 to 4** are particularly suitable for **On/Off Switches**

The settings for **Switches 5 to 8** are particularly suitable for **Proportional Switches** (joysticks etc)

Set-up No. **029**Set-up Name. **Majors**Composer / Arr. **Mark Newbold**

Date. 01/01/02

BUTTONS PAGE

SENSOR	Select Sensor	Beam 1	Beam 2	Beam 3	Beam 4	Switch 1	Switch 2	Switch 3	Switch 4	Switch 5	Switch 6	Switch 7	Switch 8
PAGE LEFT 1	Ctrl A Source	Rel Length	Gate	Rel Length	Gate	Speed	Speed	Speed	Speed	Voltage			
PAGE LEFT 2	Ctrl A Destination	072	072	070	032	Note Velocity	Note Velocity	Note Velocity	Note Velocity	094			
PAGE LEFT 3	Ctrl A Depth	+001	+001	+001	+001	+001	+001	+001	+001	+001			
PAGE LEFT 4	Ctrl A Minimum	116	064	127	071	080	080	080	080	124			
PAGE RIGHT 1	Ctrl B Source	Gate	Gate	Speed	Speed	Gate	Voltage	Voltage	Voltage	Gate	Gate		Voltage
PAGE RIGHT 2	Ctrl B Destination	032	032	Note Velocity	Note Velocity	072	072	072	072	Chan Vol 007	032		094
PAGE RIGHT 3	Ctrl B Depth	+001	+001	+001	+001	+001	+001	+001	+001	+001	+001		+001
PAGE RIGHT 4	Ctrl B Minimum	063	064	076	071	127	127	127	124	090	040		046
PITCH SEQUENCE	PSQ Select	006 Major Triad+7th	018 Chord Sequence	021 Snowy Night	006 Major Triad+7th	006 Major Triad+7th	013 Dorian Mode	013 Dorian Mode	013 Dorian Mode	013 Dorian Mode	013 Dorian Mode	007 Pentatonic Scale	013 Dorian Mode
RANGE	Max. Range	Default	Default	Default	Default								
PAGE LEFT 1	Min. Range	Default	Default	Default	Default								
BEAM DIVISION	No. of Divisions	16	05	06	16	01	01	01	01	16	16	16	16
PAGE RIGHT 1	Max Polyphony	08	08	08	08	08	08	08	08	08	08	08	08
PAGE LEFT 1	Offset	+12	+22	+23	+00	+02	+01	+04	+05	+00	+00	+00	+10
TRIGGER MODE	Select Trigger Mode	Re-Trigger	Re-Trigger	Re-Trigger	Re-Trigger	On/Off	On/Off	On/Off	On/Off	Re-Trigger	Re-Trigger	Re-Trigger	Re-Trigger
PAGE RIGHT 1	Gate Time	0.2s	0.2s	0.2s	0.2s	0.2s	0.2s	0.2s	0.2s	0.2s	0.2s	0.2s	0.2s
TRANSPOSE	No. Semitones +/-	-17	+10	-12	+07	+04	+04	+04	+04	+02	+17	+09	-03
PAGE RIGHT 1	Play Direction	Forward	Reverse	Reverse	Forward	Forward	Forward	Forward	Forward	Forward	Reverse	Reverse	Forward
PAGE LEFT 1	Global	-03	-03	-03	-03	-03	-03	-03	-03	-03	-03	-03	-03
MIDI UTILITIES	MIDI Program Select	104	094	051	099	096	096	096	096	086	001	053	012
PAGE RIGHT 1	Switch Monitor												
PAGE RIGHT 2	MIDI Bulk Dump												
PAGE RIGHT 3	Bulk Receive												
PAGE LEFT 1	MIDI Channel	01	02	03	04	05	06	07	08	09	11	12	13
PAGE LEFT 2	Start/Stop from												
PAGE LEFT 3	Realtime mode												
PAGE LEFT 4	MIDI Program Receive												

The settings for **Switches 1 to 4** are particularly suitable
for **On/Off Switches**The settings for **Switches 5 to 8** are particularly suitable
for **Proportional Switches** (joysticks etc)

Set-up No. **030**Set-up Name. **Dream Time**Composer / Arr. **Mark Newbold**

Date. 01/01/02

BUTTONS PAGE

SENSOR	Select Sensor	Beam 1	Beam 2	Beam 3	Beam 4	Switch 1	Switch 2	Switch 3	Switch 4	Switch 5	Switch 6	Switch 7	Switch 8
PAGE LEFT 1	Ctrl A Source	Rel Length	Speed	Speed	Speed	Gate	Voltage	Speed		Gate			Gate
PAGE LEFT 2	Ctrl A Destination	Pan Pos 010	Note Velocity	Note Velocity	Note Velocity	072	072	Note Velocity		Chan Vol 007			Chan Vol 007
PAGE LEFT 3	Ctrl A Depth	+050	+001	+001	+001	+001	+001	+001		+001			+001
PAGE LEFT 4	Ctrl A Minimum	000	094	127	127	127	127	082		071			081
PAGE RIGHT 1	Ctrl B Source	Gate	Gate	Gate	Gate	Gate	Gate	Gate	Gate	Voltage	Voltage	Voltage	
PAGE RIGHT 2	Ctrl B Destination	032	032	032	032	032	032	032	032	032		072	
PAGE RIGHT 3	Ctrl B Depth	+001	+001	+001	+001	+001	+001	+001	+001	+001	+079	+001	
PAGE RIGHT 4	Ctrl B Minimum	068	026	060	063	066	066	066	066	099	000	105	
PITCH SEQUENCE	PSQ Select	026 Synth Dream	026 Synth Dream	026 Synth Dream	026 Synth Dream	026 Synth Dream	026 Synth Dream	026 Synth Dream	026 Synth Dream	026 Synth Dream	026 Synth Dream	026 Synth Dream	026 Synth Dream
RANGE	Max. Range	Default	Default	Default	Default								
PAGE LEFT 1	Min. Range	Default	Default	Default	Default								
BEAM DIVISION	No. of Divisions	17	04	16	16	01	01	01	01	16	16	16	16
PAGE RIGHT 1	Max Polyphony	08	08	08	08	08	08	08	08	08	08	08	08
PAGE LEFT 1	Offset	+09	+04	+09	+09	-06	-05	-04	-03	+08	+09	+24	+13
TRIGGER MODE	Select Trigger Mode	Re-Trigger	Re-Trigger	Re-Trigger	Re-Trigger	On/Off	On/Off	On/Off	On/Off	Re-Trigger	Re-Trigger	Re-Trigger	Re-Trigger
PAGE RIGHT 1	Gate Time	0.2s	0.2s	0.2s	0.2s	0.2s	0.2s	0.2s	0.2s	0.2s	0.2s	0.2s	0.2s
TRANSCOPE	No. Semitones +/-	+24	+12	+12	+19	+24	+24	+24	+24	+24	+19	+36	+12
PAGE RIGHT 1	Play Direction	Forward	Forward	Reverse	Forward	Forward	Forward	Forward	Forward	Reverse	Forward	Reverse	Forward
PAGE LEFT 1	Global	+00	+00	+00	+00	+00	+00	+00	+00	+00	+00	+00	+00
MIDI UTILITIES	MIDI Program Select	103	098	098	090	096	096	096	096	113	079	090	094
PAGE RIGHT 1	Switch Monitor												
PAGE RIGHT 2	MIDI Bulk Dump												
PAGE RIGHT 3	Bulk Receive												
PAGE LEFT 1	MIDI Channel	01	02	03	04	05	06	07	08	09	11	12	13
PAGE LEFT 2	Start/Stop from												
PAGE LEFT 3	Realtime mode												
PAGE LEFT 4	MIDI Program Receive												

The settings for **Switches 1 to 4** are particularly suitable
for **On/Off Switches**

The settings for **Switches 5 to 8** are particularly suitable
for **Proportional Switches** (joysticks etc)

BUTTONS PAGE

SENSOR	Select Sensor	Beam 1	Beam 2	Beam 3	Beam 4	Switch 1	Switch 2	Switch 3	Switch 4	Switch 5	Switch 6	Switch 7	Switch 8
PAGE LEFT 1	Ctrl A Source	Rel Length	Rel Length	Rel Length	Rel Length	Voltage	Voltage	Voltage	Voltage	Voltage	Voltage	Voltage	Voltage
PAGE LEFT 2	Ctrl A Destination	To No Controller	To No Controller	To No Controller	To No Controller	To No Controller	To No Controller	To No Controller	To No Controller	To No Controller	To No Controller	To No Controller	To No Controller
PAGE LEFT 3	Ctrl A Depth	Off	Off	Off	Off	Off	Off	Off	Off	Off	Off	Off	Off
PAGE LEFT 4	Ctrl A Minimum	000	000	000	000	000	000	000	000	000	000	000	000
PAGE RIGHT 1	Ctrl B Source	Rel Length	Rel Length	Rel Length	Rel Length	Voltage	Voltage	Voltage	Voltage	Voltage	Voltage	Voltage	Voltage
PAGE RIGHT 2	Ctrl B Destination	To No Controller	To No Controller	To No Controller	To No Controller	To No Controller	To No Controller	To No Controller	To No Controller	To No Controller	To No Controller	To No Controller	To No Controller
PAGE RIGHT 3	Ctrl B Depth	Off	Off	Off	Off	Off	Off	Off	Off	Off	Off	Off	Off
PAGE RIGHT 4	Ctrl B Minimum	000	000	000	000	000	000	000	000	000	000	000	000
PITCH SEQUENCE	PSQ Select	007 Pentatonic Scale	007 Pentatonic Scale	007 Pentatonic Scale	007 Pentatonic Scale	007 Pentatonic Scale	007 Pentatonic Scale	007 Pentatonic Scale	007 Pentatonic Scale	007 Pentatonic Scale	007 Pentatonic Scale	007 Pentatonic Scale	007 Pentatonic Scale
RANGE	Max. Range	0.60m	0.60m	0.60m	0.60m	0.60m	0.60m	0.60m	0.60m	0.60m	0.60m	0.60m	0.60m
PAGE LEFT 1	Min. Range	0.20m	0.20m	0.20m	0.20m	0.20m	0.20m	0.20m	0.20m	0.20m	0.20m	0.20m	0.20m
BEAM DIVISION	No. of Divisions	16	16	16	16	16	16	16	16	16	16	16	16
PAGE RIGHT 1	Max Polyphony	24	24	24	24	24	24	24	24	24	24	24	24
PAGE LEFT 1	Offset	+00	+00	+00	+00	+00	+00	+00	+00	+00	+00	+00	+00
TRIGGER MODE	Select Trigger Mode	Re-Trigger	Re-Trigger	Re-Trigger	Re-Trigger	Re-Trigger	Re-Trigger	Re-Trigger	Re-Trigger	Re-Trigger	Re-Trigger	Re-Trigger	Re-Trigger
PAGE RIGHT 1	Gate Time	0.1s	0.1s	0.1s	0.1s	0.1s	0.1s	0.1s	0.1s	0.1s	0.1s	0.1s	0.1s
TRANSCOPE	No. Semitones +/-	+00	+00	+00	+00	+00	+00	+00	+00	+00	+00	+00	+00
PAGE RIGHT 1	Play Direction	Forward	Forward	Forward	Forward	Forward	Forward	Forward	Forward	Forward	Forward	Forward	Forward
PAGE LEFT 1	Global	+00	+00	+00	+00	+00	+00	+00	+00	+00	+00	+00	+00
MIDI UTILITIES	MIDI Program Select	Off	Off	Off	Off	Off	Off	Off	Off	Off	Off	Off	Off
PAGE RIGHT 1	Switch Monitor												
PAGE RIGHT 2	MIDI Bulk Dump												
PAGE RIGHT 3	Bulk Receive												
PAGE LEFT 1	MIDI Channel	01	02	03	04	05	06	07	08	09	10	11	12
PAGE LEFT 2	Start/Stop from												
PAGE LEFT 3	Realtime mode												
PAGE LEFT 4	MIDI Program Receive												

The settings for **Switches 1 to 4** are particularly suitable for **On/Off Switches**

The settings for **Switches 5 to 8** are particularly suitable for **Proportional Switches** (joysticks etc)

APPENDIX A – SET-UPS AND PITCH SEQUENCES

2. PITCH SEQUENCES 001 to 100

Complete tables of all the note/chords assigned to each of Soundbeam 2's Pitch Sequences

Pitch Sequences 001 to 030 are *Locked Pitch Sequences*, preset in the factory. Their component note/chords can be changed, but **Not Saved**, and will revert to the original default values if another Pitch Sequence or Set-up is selected, or when Soundbeam is switched off.

Pitch Sequences 031 to 100 are *User Pitch Sequences*. Their component note/chords - the same as those of **Pitch Sequence No. 017 "Chromatic Scale"** - have also been preset in the factory. However, in these, any changes **Can** be **Saved**, and will then become the new default settings, persisting even when Soundbeam is switched off and then switched on again.

3 copies of a blank form for recording the settings of new *User Pitch Sequences* are supplied (in the folder at the end of Part 3) for photocopying.

THE SOUNDBEAM PROJECT

JANUARY 2002

Pitch Sequence No. **002**

Pitch Sequence Name. **Arpeggio - Minor Triad**

Description / Group **Major and Minor Arpeggios, Scales and Modes**

Composer / Arr. **Edward Williams**

LOCKED PITCH SEQUENCES

Pitch Sequence No. **003**

Pitch Sequence Name. **Major Triad 7, 9, 11**

Description / Group **Major and Minor Arpeggios, Scales and Modes**

Composer / Arr. **Edward Williams**

Pitch Sequence No. **004**

Pitch Sequence Name. **Minor Triad 7, 9, 11**

Description / Group **Major and Minor Arpeggios, Scales and Modes**

Composer / Arr. **Edward Williams**

DIVISIONS	01	02	03	04	05	06	07	08	09	10	11	12	13	14	15	16	17	18	19	20	21	22	23	24	25	26	27	28	29	30	31	32	
Note 1	C0	E♭0	G0	B♭0	D1	F1	A1	C2	D2	B♭1	G1	E♭1	C1	B♭0	G0	B♭0	C1	E♭1	G1	B♭1	D2	F2	A2	C3	D3	B♭2	G2	E♭2	C2	B♭1	G1	B♭1	
Note 2																																	
Note 3																																	
Note 4																																	

DIVISIONS	33	34	35	36	37	38	39	40	41	42	43	44	45	46	47	48	49	50	51	52	53	54	55	56	57	58	59	60	61	62	63	64	
Note 1	C2	E♭2	G2	B♭2	D3	F3	A3	C4	D4	B♭3	G3	E♭3	C3	B♭2	G2	B♭2	C3	E♭3	G3	B♭3	D4	F4	A4	C5	D5	B♭4	G4	E♭4	G4	B♭4	D5	F5	
Note 2																																	
Note 3																																	
Note 4																																	

LOCKED PITCH SEQUENCES

Pitch Sequence No. **005**

Pitch Sequence Name. **Major Triad +6th**

Description / Group **Major and Minor Arpeggios, Scales and Modes**

Composer / Arr. **Edward Williams**

DIVISIONS	01	02	03	04	05	06	07	08	09	10	11	12	13	14	15	16	17	18	19	20	21	22	23	24	25	26	27	28	29	30	31	32	
Note 1	C0	E0	G0	A0	C1	A0	G0	E0	G0	A0	C1	E1	G1	E1	C1	A0	C1	E1	G1	A1	C2	A1	G1	A1	C2	E2	G2	A2	C3	A2	G2	A2	
Note 2																																	
Note 3																																	
Note 4																																	

DIVISIONS	33	34	35	36	37	38	39	40	41	42	43	44	45	46	47	48	49	50	51	52	53	54	55	56	57	58	59	60	61	62	63	64	
Note 1	C3	E3	G3	A3	C4	A3	C4	E4	C4	E4	G4	A4	G4	A4	C5	E5	C5	E5	G5	E5	G5	A5	C6	A5	G5	A5	C6	E6	G6	A6	C7	E7	
Note 2																																	
Note 3																																	
Note 4																																	

Pitch Sequence No. **006**

Pitch Sequence Name. **Major Triad +7th**

Description / Group **Major and Minor Arpeggios, Scales and Modes**

Composer / Arr. **Edward Williams**

DIVISIONS	01	02	03	04	05	06	07	08	09	10	11	12	13	14	15	16	17	18	19	20	21	22	23	24	25	26	27	28	29	30	31	32	
Note 1	C0	E♭0	G0	B♭0	C1	B♭0	G0	E♭0	G0	B♭0	C1	E♭1	G1	E♭1	C1	B♭0	C1	E♭1	G1	B♭1	C2	B♭1	G1	B♭1	C2	E♭2	G2	B♭2	C3	B♭2	G2	B♭2	
Note 2																																	
Note 3																																	
Note 4																																	

DIVISIONS	33	34	35	36	37	38	39	40	41	42	43	44	45	46	47	48	49	50	51	52	53	54	55	56	57	58	59	60	61	62	63	64	
Note 1	C3	E♭3	G3	B♭3	C4	B♭3	C4	E♭4	C4	E♭4	G4	B♭4	G4	B♭4	C5	E♭5	C5	E♭5	G5	E♭5	G5	B♭5	C6	B♭5	G5	B♭5	C6	E♭6	G6	B♭6	C7	E♭7	
Note 2																																	
Note 3																																	
Note 4																																	

LOCKED PITCH SEQUENCES

Pitch Sequence No. **008**

Pitch Sequence Name. **Whole Tone Scale**

Description / Group **Major and Minor Arpeggios, Scales and Modes**

Composer / Arr. **Edward Williams**

DIVISIONS	01	02	03	04	05	06	07	08	09	10	11	12	13	14	15	16	17	18	19	20	21	22	23	24	25	26	27	28	29	30	31	32			
Note 1	C0	D0	E0	F#0	G0	A0	B0	C1	D1	E1	F#1	G1	A1	B1	C2	D2	E2	F#2	G2	A2	B2	C3	D3												
Note 2																																			
Note 3																																			
Note 4																																			

DIVISIONS	33	34	35	36	37	38	39	40	41	42	43	44	45	46	47	48	49	50	51	52	53	54	55	56	57	58	59	60	61	62	63	64				
Note 1	E3	F#3	G3	A3	C4	D4	E4	F#4	G4	A4	C5	D5	E5	F#5	G5	A5	C6	D6	E6	F#6	G6	A6	B6	C7	D7											
Note 2																																				
Note 3																																				
Note 4																																				

LOCKED PITCH SEQUENCES

Pitch Sequence No. **009**

Pitch Sequence Name. **Gapped Hexatonic**

Description / Group **Major and Minor Arpeggios, Scales and Modes**

Composer / Arr. **Edward Williams**

Musical notation for divisions 01-32. The sequence starts with G² (marked with a dashed line) and proceeds through various intervals and accidentals.

DIVISIONS	01	02	03	04	05	06	07	08	09	10	11	12	13	14	15	16	17	18	19	20	21	22	23	24	25	26	27	28	29	30	31	32		
Note 1	C0	D ^b 0	E0	F0	E0	D ^b 0	E0	F0	G#0	A0	G#0	F0	G#0	A0	C1	D ^b 1	C1	A0	C1	D ^b 1	E1	F1	G#1	A1	C2	D ^b 2	E2	F2	G#2	A2	C3	D ^b 3		
Note 2																																		
Note 3																																		
Note 4																																		

Musical notation for divisions 33-64. The sequence continues with various intervals and accidentals, including some double accidentals.

DIVISIONS	33	34	35	36	37	38	39	40	41	42	43	44	45	46	47	48	49	50	51	52	53	54	55	56	57	58	59	60	61	62	63	64		
Note 1	E3	F3	G#3	A3	C4	D ^b 4	E4	F4	E4	D ^b 4	E4	F4	G#4	A4	G#4	F4	G#4	A4	C5	D ^b 5	C5	A4	C5	D ^b 5	E5	F5	E5	D ^b 5	E5	F5	G#5	A5		
Note 2																																		
Note 3																																		
Note 4																																		

Pitch Sequence No. **010**

Pitch Sequence Name. **Diatonic Major Scale**

Description / Group **Major and Minor Arpeggios, Scales and Modes**

Composer / Arr. **Edward Williams**

DIVISIONS	01	02	03	04	05	06	07	08	09	10	11	12	13	14	15	16	17	18	19	20	21	22	23	24	25	26	27	28	29	30	31	32	
Note 1	C0	D0	E0	F0	E0	D0	E0	F0	G0	A0	G0	F0	G0	A0	B0	C1	D1	E1	F1	G1	A1	B1	C2	D2	E2	F2	G2	A2	B2	C3	D3	E3	
Note 2																																	
Note 3																																	
Note 4																																	

DIVISIONS	33	34	35	36	37	38	39	40	41	42	43	44	45	46	47	48	49	50	51	52	53	54	55	56	57	58	59	60	61	62	63	64	
Note 1	F3	G3	A3	B3	C4	D4	E4	F4	G4	A4	B4	C5	D5	E5	F5	G5	A5	G5	F5	G5	A5	B5	C6	D6	E6	D6	C6	D6	E6	F6	G6	A6	
Note 2																																	
Note 3																																	
Note 4																																	

LOCKED PITCH SEQUENCES

Pitch Sequence No. **011**

Pitch Sequence Name. **Harmonic Minor Scale**

Description / Group **Major and Minor Arpeggios, Scales and Modes**

Composer / Arr. **Edward Williams**

DIVISIONS	01	02	03	04	05	06	07	08	09	10	11	12	13	14	15	16	17	18	19	20	21	22	23	24	25	26	27	28	29	30	31	32	
Note 1	C0	D0	E♭0	F0	E♭0	D0	E♭0	F0	G0	A♭0	G0	F0	G0	A♭0	B0	C1	D1	E♭1	F1	G1	A♭1	B1	C2	D2	E♭2	F2	G2	A♭2	B2	C3	D3	E♭3	
Note 2																																	
Note 3																																	
Note 4																																	

DIVISIONS	33	34	35	36	37	38	39	40	41	42	43	44	45	46	47	48	49	50	51	52	53	54	55	56	57	58	59	60	61	62	63	64	
Note 1	F3	G3	A♭3	B3	C4	D4	E♭4	F4	G4	A4	B♭4	D♭5	D5	E♭5	F5	G5	A♭5	G5	F5	G5	A♭5	B5	C6	D6	E♭6	D6	C6	D6	E♭6	F6	G6	A♭6	
Note 2																																	
Note 3																																	
Note 4																																	

Pitch Sequence No. **012**

Pitch Sequence Name. **Aeolian Mode**

Description / Group **Major and Minor Arpeggios, Scales and Modes**

Composer / Arr. **Edward Williams**

DIVISIONS	01	02	03	04	05	06	07	08	09	10	11	12	13	14	15	16	17	18	19	20	21	22	23	24	25	26	27	28	29	30	31	32	
Note 1	C0	D0	E♭0	F0	E♭0	D0	E♭0	F0	G0	A♭0	G0	F0	G0	A♭0	B♭0	C1	D1	E♭1	F1	G1	A♭1	B♭1	C2	D2	E♭2	F2	G2	A♭2	B♭2	C3	D3	E♭3	
Note 2																																	
Note 3																																	
Note 4																																	

DIVISIONS	33	34	35	36	37	38	39	40	41	42	43	44	45	46	47	48	49	50	51	52	53	54	55	56	57	58	59	60	61	62	63	64	
Note 1	F3	G3	A♭3	B♭3	C4	D4	E♭4	F4	G4	A♭5	B♭5	C5	D5	E♭5	F5	G5	A♭5	G5	F5	G5	A♭5	B♭5	C6	D6	E♭6	D6	C6	D6	E♭6	F6	G6	A♭6	
Note 2																																	
Note 3																																	
Note 4																																	

LOCKED PITCH SEQUENCES

Pitch Sequence No. **013**

Pitch Sequence Name. **Dorian Mode**

Description / Group **Major and Minor Arpeggios, Scales and Modes**

Composer / Arr. **Edward Williams**

DIVISIONS	01	02	03	04	05	06	07	08	09	10	11	12	13	14	15	16	17	18	19	20	21	22	23	24	25	26	27	28	29	30	31	32	
Note 1	C0	D0	E♭0	F0	E♭0	D0	E♭0	F0	G0	A0	G0	F0	G0	A0	B♭0	C1	D1	E♭1	F1	G1	A1	B♭1	C2	D2	E♭2	F2	G2	A2	B♭2	C3	D3	E♭3	
Note 2																																	
Note 3																																	
Note 4																																	

DIVISIONS	33	34	35	36	37	38	39	40	41	42	43	44	45	46	47	48	49	50	51	52	53	54	55	56	57	58	59	60	61	62	63	64	
Note 1	F3	G3	A3	B♭3	C4	D4	E♭4	F4	G4	A4	B♭4	C5	D5	E♭5	F5	G5	A5	G5	F5	G5	A5	B♭5	C6	D6	E♭6	D6	C6	D6	E♭6	F6	G6	A6	
Note 2																																	
Note 3																																	
Note 4																																	

Pitch Sequence No. **014**

Pitch Sequence Name. **Lydian Mode**

Description / Group **Major and Minor Arpeggios, Scales and Modes**

Composer / Arr. **Edward Williams**

DIVISIONS	01	02	03	04	05	06	07	08	09	10	11	12	13	14	15	16	17	18	19	20	21	22	23	24	25	26	27	28	29	30	31	32	
Note 1	C0	D0	E0	F#0	E0	D0	E0	F#0	G0	A0	G0	F#0	G0	A0	B0	C1	D1	E1	F#1	G1	A1	B1	C2	D2	E2	F#2	G2	A2	B2	C3	D3	E3	
Note 2																																	
Note 3																																	
Note 4																																	

DIVISIONS	33	34	35	36	37	38	39	40	41	42	43	44	45	46	47	48	49	50	51	52	53	54	55	56	57	58	59	60	61	62	63	64	
Note 1	F#3	G3	A3	B3	C4	D4	E4	F#4	G4	A4	B4	C5	D5	E5	F#5	G5	A5	G5	F#5	G5	A5	B5	C6	D6	E6	D6	C6	D6	E6	F#6	G6	A6	
Note 2																																	
Note 3																																	
Note 4																																	

LOCKED PITCH SEQUENCES

Pitch Sequence No. **015**

Pitch Sequence Name. **Mixolydian Mode**

Description / Group **Major and Minor Arpeggios, Scales and Modes**

Composer / Arr. **Edward Williams**

DIVISIONS	01	02	03	04	05	06	07	08	09	10	11	12	13	14	15	16	17	18	19	20	21	22	23	24	25	26	27	28	29	30	31	32		
Note 1	C0	D0	E0	F0	E0	D0	E0	F0	G0	A0	G0	F0	G0	A0	B \flat 0	C1	D1	E1	F1	G1	A1	B \flat 1	C2	D2	E2	F2	G2	A2	B \flat 2	C3	D3	E3		
Note 2																																		
Note 3																																		
Note 4																																		

DIVISIONS	33	34	35	36	37	38	39	40	41	42	43	44	45	46	47	48	49	50	51	52	53	54	55	56	57	58	59	60	61	62	63	64			
Note 1	F3	G3	A3	B \flat 3	C4	D4	E4	F4	G4	A4	B \flat 4	C5	D5	E5	F5	G5	A5	G5	F5	G5	A5	B \flat 5	C6	D6	E6	D6	C6	D6	E6	F6	G6	A6			
Note 2																																			
Note 3																																			
Note 4																																			

Note 4

LOCKED PITCH SEQUENCES

Pitch Sequence No. **016**

Pitch Sequence Name. **Blues Scale**

Description / Group **Major and Minor Arpeggios, Scales and Modes**

Composer / Arr. **Edward Williams**

LOCKED PITCH SEQUENCES

Pitch Sequence No. **017**

Pitch Sequence Name. **Chromatic Scale**

Description / Group **Major and Minor Arpeggios, Scales and Modes**

Composer / Arr. **Edward Williams**

DIVISIONS	01	02	03	04	05	06	07	08	09	10	11	12	13	14	15	16	17	18	19	20	21	22	23	24	25	26	27	28	29	30	31	32	
Note 1	C0	D \flat 0	D0	E \flat 0	E0	F0	F \sharp 0	G0	A \flat 0	A0	B \flat 0	B0	C1	D \flat 1	D1	E \flat 1	E1	F1	F \sharp 1	G1	A \flat 1	A1	B \flat 1	B1	C2	D \flat 2	D2	E \flat 2	E2	F2	F \sharp 2	G2	
Note 2																																	
Note 3																																	
Note 4																																	

DIVISIONS	33	34	35	36	37	38	39	40	41	42	43	44	45	46	47	48	49	50	51	52	53	54	55	56	57	58	59	60	61	62	63	64	
Note 1	A \flat 2	A2	B \flat 2	B2	C3	D \flat 3	D3	E \flat 3	E3	F3	F \sharp 3	G3	A \flat 3	A3	B \flat 3	B3	C4	D \flat 4	D4	E \flat 4	E4	F4	F \sharp 4	G4	A \flat 4	A4	B \flat 4	B4	C5	D \flat 5	D5	E \flat 5	
Note 2																																	
Note 3																																	
Note 4																																	

Pitch Sequence No. **018**

Pitch Sequence Name. **Chord Sequence**

Description / Group **Major and Minor Arpeggios, Scales and Modes**

Composer / Arr. **Edward Williams**

DIVISIONS	01	02	03	04	05	06	07	08	09	10	11	12	13	14	15	16	17	18	19	20	21	22	23	24	25	26	27	28	29	30	31	32
Note 1	A2	A2	G2	B2	A2	G2	A2	A2	B2	A2	G2	A2	B2	C3	E3	E3	A2	A2	G2	B2	A2	G2	A2	A2	B2	A2	G2	A2	B2	C3	E3	E3
Note 2	G2	F#2	E2	F#2	E2	D2	E2	F#2	G#2	F#2	E2	F#2	G#2	A2	A#2	B2	E2	D2	C2	D2	C2	C2	D2	E2	E2	D2	C2	D2	E2	F2	F#2	G2
Note 3	E2	D2	C2	D2	C2	C2	D2	E2	E2	D2	C2	D2	E2	F2	F#2	G2	G1	F#1	E1	F#1	E1	D1	E1	F#1	G#1	F#1	E1	F#1	G#1	A1	A#1	B1
Note 4	C2	B1	A1	G1	F1	A ^b 1	A1	D2	C2	B ^b 1	A ^b 1	B ^b 1	C2	D ^b 2	D2	D#2	C1	B0	A0	G0	F0	A ^b 0	A0	D1	C1	B ^b 0	A ^b 0	B ^b 0	C1	D ^b 1	D1	D#1

DIVISIONS	33	34	35	36	37	38	39	40	41	42	43	44	45	46	47	48	49	50	51	52	53	54	55	56	57	58	59	60	61	62	63	64
Note 1	B2	C3	A2	B ^b 2	G2	A ^b 2	F2	F2	B2	C3	A2	B ^b 2	G2	A ^b 2	F2	F2	A2	B2	C3	G2	A2	G2	A2	A2	E2	B2	C3	G2	A2	G2	A2	A2
Note 2	G#2	G2	F#2	E#2	E2	D#2	D2	C2	E2	D#2	D2	C#2	C2	B1	B ^b 1	B ^b 1	E2	G2	E2	E2	F2	D2	D2	C2	C2	D2	C2	B1	C2	B1	C2	C2
Note 3	E2	D#2	D2	C#2	C2	B1	B ^b 1	B ^b 1	G#1	G1	F#1	E#1	E1	D#1	D1	C1	C2	D2	C2	B1	C2	B1	C2	E1	E1	G1	E1	E1	F1	D1	D1	E1
Note 4	C2	B1	B ^b 1	A1	A ^b 1	G1	G ^b 1	F1	C1	B0	B ^b 0	A0	A ^b 0	G0	G ^b 0	F0	A1	G1	F1	E1	D1	E1	F1	A0	A0	G0	F0	F0	D0	E0	F0	A0

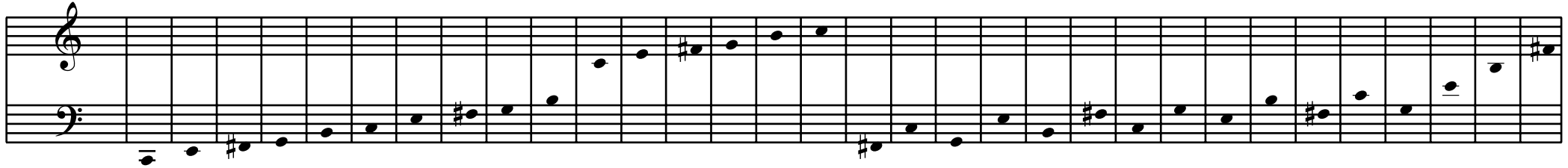
LOCKED PITCH SEQUENCES

Pitch Sequence No. **019**

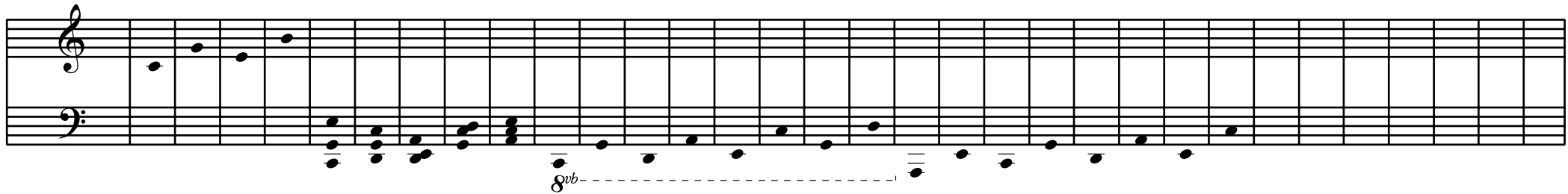
Pitch Sequence Name. **Pentaset 1**

Description / Group **Major and Minor Arpeggios, Scales and Modes**

Composer / Arr. **Pete McPhail**



DIVISIONS	01	02	03	04	05	06	07	08	09	10	11	12	13	14	15	16	17	18	19	20	21	22	23	24	25	26	27	28	29	30	31	32	
Note 1	C1	E1	F#1	G1	B1	C2	E2	F#2	G2	B2	C3	E3	F#3	G3	B3	C4	F#1	C2	G1	E2	B1	F#2	C2	G2	E2	B2	F#2	C3	G2	E3	B2	F#3	
Note 2																																	
Note 3																																	
Note 4																																	



DIVISIONS	33	34	35	36	37	38	39	40	41	42	43	44	45	46	47	48	49	50	51	52	53	54	55	56	57	58	59	60	61	62	63	64	
Note 1	C3	G3	E3	B3	E2	C2	A1	D2	E2	C0	G0	D0	A0	E0	C1	G0	D1	A0	E1	C1	G1	D1	A1	E1	C2								
Note 2					G1	G1	E1	C2	C2																								
Note 3					C1	D1	D1	G1	A1																								
Note 4																																	

Pitch Sequence No. **020**

Pitch Sequence Name. **Pentaset 2**

Description / Group **Major and Minor Arpeggios, Scales and Modes**

Composer / Arr. **Pete McPhail**

DIVISIONS	01	02	03	04	05	06	07	08	09	10	11	12	13	14	15	16	17	18	19	20	21	22	23	24	25	26	27	28	29	30	31	32	
Note 1	C0	E0	F0	G0	B0	C1	E1	F1	G1	B1	C2	E2	F2	G2	B2	C3	E3	F3	G3	B3	C4	E4	F4	G4	B4	C5	C0	G0	E0	B0	F0	D1	
Note 2																																	
Note 3																																	
Note 4																																	

DIVISIONS	33	34	35	36	37	38	39	40	41	42	43	44	45	46	47	48	49	50	51	52	53	54	55	56	57	58	59	60	61	62	63	64	
Note 1	G0	E1	B0	F1	C1	G1	E1	B1	F1	C2	G1	E2	B1	F2	C2	G2	E2	B2	F2	C3	G2	E3	B2	F3	G1	B1	E2	F2	B2	C3			
Note 2																										F1	E1	C2	D2	G2	G2		
Note 3																										C1	C1	F1	G1	C2	F2		
Note 4																																	

LOCKED PITCH SEQUENCES

Pitch Sequence No. **021**

Pitch Sequence Name. **Snowy Night**

Description / Group **Major and Minor Arpeggios, Scales and Modes**

Composer / Arr. **Mark Newbold**

DIVISIONS	01	02	03	04	05	06	07	08	09	10	11	12	13	14	15	16	17	18	19	20	21	22	23	24	25	26	27	28	29	30	31	32
Note 1	C1	E♭1	D1	F1	C1	E♭1	F1	A♭1	C2	G1	C2	E♭2	F2	G2	A♭2	B♭2	C3	G2	E♭4	C4	B♭3	A♭3	C4	G3	E♭3	C3	B♭2	C3	G2	E♭2		
Note 2	A♭0	A♭0	A♭0																													
Note 3	F0	F0	F0																													
Note 4																																

DIVISIONS	33	34	35	36	37	38	39	40	41	42	43	44	45	46	47	48	49	50	51	52	53	54	55	56	57	58	59	60	61	62	63	64
Note 1	D2	G2	A2	B2	C3	B2	D3	G3	D3	B2	C3	D3	B2	E2	G2	D3	F3	G3	A3	G3	F3	D3	G2									
Note 2																																
Note 3																																
Note 4																																

Pitch Sequence No. **024**

Pitch Sequence Name. **Tintagel Octave**

Description / Group **Major and Minor Arpeggios, Scales and Modes**

Composer / Arr. **Mark Newbold**

Musical notation for the first system of the Tintagel Octave sequence. It consists of a treble clef staff and a bass clef staff. The treble staff contains notes from G5 down to G1, with various accidentals (sharps, flats, naturals). The bass staff contains notes from F4 down to E0, also with various accidentals. An 8vb (octave below) symbol is placed below the bass staff at the end of the sequence.

DIVISIONS	01	02	03	04	05	06	07	08	09	10	11	12	13	14	15	16	17	18	19	20	21	22	23	24	25	26	27	28	29	30	31	32
Note 1	F5	A♭5	G5	C5	E♭5	C5	G4	A♭4	G4	F4	E♭4	C4	G3	A♭3	G3	F3	E♭3	C3	G2	A♭2	G2	F2	E♭2	C2	G1	A♭1	G1	F1	E♭1	C1	C1	E♭1
Note 2	F4	A♭4	G4	C4	E♭4	C4	G3	A♭3	G3	F3	E♭3	C3	G2	A♭2	G2	F2	E♭2	C2	G1	A♭1	G1	F1	E♭1	C1	G0	A♭0	G0	F0	E♭0	C0	C0	E♭0
Note 3																																
Note 4																																

Musical notation for the second system of the Tintagel Octave sequence. It continues the treble and bass clef staff notation from the first system. The treble staff contains notes from G1 down to G4, and the bass staff contains notes from E0 down to F1. An 8vb (octave below) symbol is placed below the bass staff at the beginning of the sequence.

DIVISIONS	33	34	35	36	37	38	39	40	41	42	43	44	45	46	47	48	49	50	51	52	53	54	55	56	57	58	59	60	61	62	63	64	
Note 1	F1	G1	A♭1	G1	B♭1	C2	E♭2	F2	A♭2	G2	F2	B♭2	C3	E♭3	F3	A♭3	G3	F3	B♭3	C4	E♭4	F4	G4	A♭4	F4	B♭4	F5	C5	G4	A♭4	G4	C4	
Note 2	F0	G0	A♭0	G0	B♭0	C1	E♭1	F1	A♭1	G1	F1	B♭1	C2	E♭2	F2	A♭2	G2	F2	B♭2	C3	E♭3	F3	G3	A♭3	F3	B♭3	F4	C4	G3	A♭3	G3	C3	
Note 3																																	
Note 4																																	

LOCKED PITCH SEQUENCES

Pitch Sequence No. **025**

Pitch Sequence Name. **Blueming Scale**

Description / Group **Major and Minor Arpeggios, Scales and Modes**

Composer / Arr. **Pete McPhail**

DIVISIONS	01	02	03	04	05	06	07	08	09	10	11	12	13	14	15	16	17	18	19	20	21	22	23	24	25	26	27	28	29	30	31	32		
Note 1	C0	D♭0	E♭0	G0	A♭0	B♭0	C1	D♭1	E♭1	F♭1	G1	A♭1	B♭1	C2	D♭2	E♭2	F♭2	G2	A♭2	B♭2	C3	D♭3	E♭3	F♭3	G3	A♭3	B♭3	C4	D♭4	E♭4	F♭4	G4		
Note 2																																		
Note 3																																		
Note 4																																		

DIVISIONS	33	34	35	36	37	38	39	40	41	42	43	44	45	46	47	48	49	50	51	52	53	54	55	56	57	58	59	60	61	62	63	64	
Note 1	A♭4	B♭4	C5	C0	C1	E♭0	F♭0	B♭0	G0	G♭0	F0	C0	C1	G2	F2	E♭2	C3	C3	G♭3	G3	F3	B♭3	G3	D4	C4	B♭3	F3	C3	B♭2	G2	B♭2	F2	
Note 2															F♭2	D♭2	D♭2	A♭2															
Note 3															B♭1	B♭1	B♭1	F♭2															
Note 4															C1	E♭1	A♭1	B♭1															

Pitch Sequence No. **026**

Pitch Sequence Name. **Synth Dream**

Description / Group **Major and Minor Arpeggios, Scales and Modes**

Composer / Arr. **Mark Newbold**

DIVISIONS	01	02	03	04	05	06	07	08	09	10	11	12	13	14	15	16	17	18	19	20	21	22	23	24	25	26	27	28	29	30	31	32	
Note 1	C0	D♭0	E♭0	G0	A♭0	B♭0	C1	D♭1	E♭1	F♭1	G1	A♭1	B♭1	C2	D♭2	E♭2	F♭2	G2	A♭2	B♭2	C3	D♭3	E♭3	F♭3	G3	A♭3	B♭3	C4	D♭4	E♭4	F♭4	G4	
Note 2																																	
Note 3																																	
Note 4																																	

DIVISIONS	33	34	35	36	37	38	39	40	41	42	43	44	45	46	47	48	49	50	51	52	53	54	55	56	57	58	59	60	61	62	63	64	
Note 1	A♭4	B♭4	C5	C0	C1	E♭0	F♭0	B♭0	G0	G♭0	F0	C0	C1	G2	F2	E♭2	C3	C3	G♭3	G3	F3	B♭3	G3	D4	C4	B♭3	F3	C3	B♭2	G2	B♭2	F2	
Note 2															F♭2	D♭2	D♭2	A♭2															
Note 3															B♭1	B♭1	B♭1	F♭2															
Note 4															C1	E♭1	A♭1	B♭1															

LOCKED PITCH SEQUENCES

Pitch Sequence No. **027**

Pitch Sequence Name. **Cine Dream**

Description / Group **Major and Minor Arpeggios, Scales and Modes**

Composer / Arr. **Pete McPhail / Mark Newbold**

DIVISIONS	01	02	03	04	05	06	07	08	09	10	11	12	13	14	15	16	17	18	19	20	21	22	23	24	25	26	27	28	29	30	31	32	
Note 1	C0	F#0	D0	G#0	E0	A#0	F#0	C1	G#0	D1	A#0	E1	C1	F#1	D1	G#1	E1	A#1	F#1	C2	G#1	D2	A#1	E2	C2	F#2	D2	G#2	E2	A#2	F#2	C3	
Note 2																																	
Note 3																																	
Note 4																																	

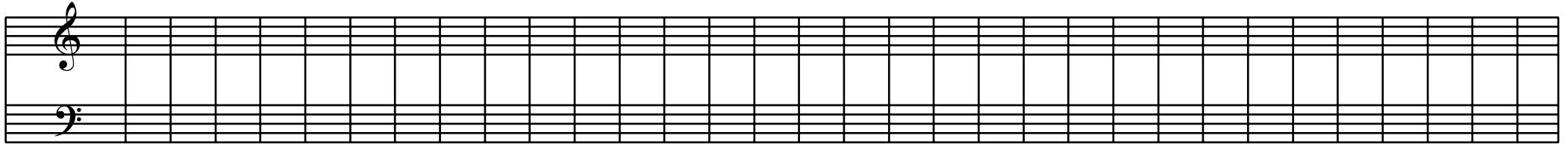
DIVISIONS	33	34	35	36	37	38	39	40	41	42	43	44	45	46	47	48	49	50	51	52	53	54	55	56	57	58	59	60	61	62	63	64	
Note 1	G#2	D3	A#2	E3	C3	F#3	D3	G#3	E3	A#3	F#3	C4	G#3	D4	A#3	E4	C4	F#4	D4	G#4	E4	A#4	F#4	C5	G2	D1	A#0	C0	G0				
Note 2																										C2	C1	G0					
Note 3																																	
Note 4																																	

Pitch Sequence No. **028**

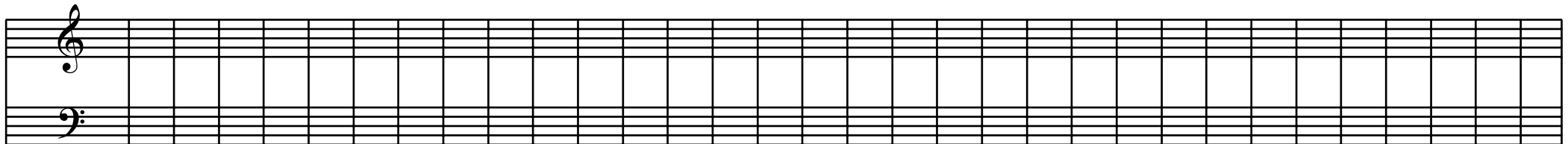
Pitch Sequence Name. **MIDI Program Sequence (Even Nos.)**

Description / Group **Major and Minor Arpeggios, Scales and Modes**

Composer / Arr. **Mark Newbold**



DIVISIONS	01	02	03	04	05	06	07	08	09	10	11	12	13	14	15	16	17	18	19	20	21	22	23	24	25	26	27	28	29	30	31	32	
Note 1	02	04	06	08	10	12	14	16	18	20	22	24	26	28	30	32	34	36	38	40	42	44	46	48	50	52	54	56	58	60	62	64	
Note 2																																	
Note 3																																	
Note 4																																	



DIVISIONS	33	34	35	36	37	38	39	40	41	42	43	44	45	46	47	48	49	50	51	52	53	54	55	56	57	58	59	60	61	62	63	64	
Note 1	66	68	70	72	74	76	78	80	82	84	86	88	90	92	94	96	98	100	102	104	106	108	110	112	114	116	118	120	122	124	126	128	
Note 2																																	
Note 3																																	
Note 4																																	

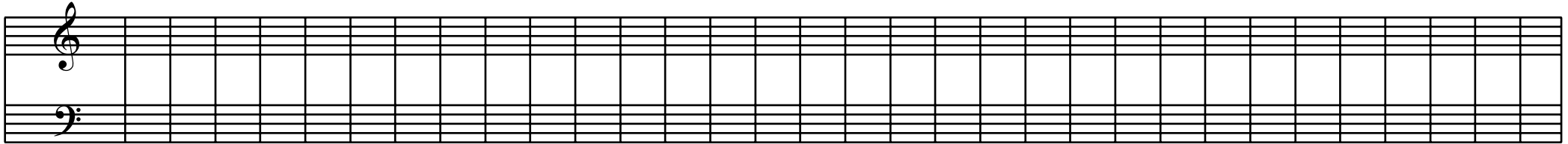
LOCKED PITCH SEQUENCES

Pitch Sequence No. **029**

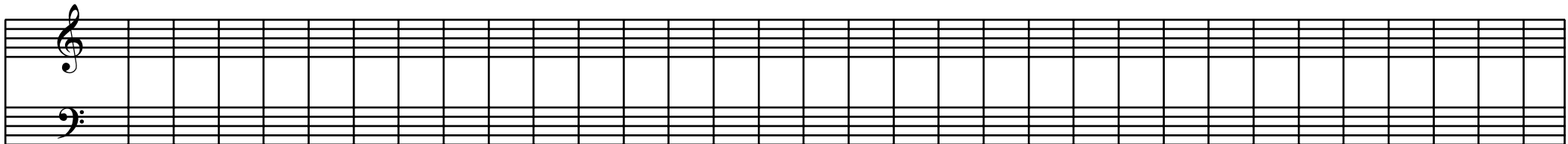
Pitch Sequence Name. **MIDI Program Sequence (Odd Nos.)**

Description / Group **Major and Minor Arpeggios, Scales and Modes**

Composer / Arr. **Mark Newbold**



DIVISIONS	01	02	03	04	05	06	07	08	09	10	11	12	13	14	15	16	17	18	19	20	21	22	23	24	25	26	27	28	29	30	31	32	
Note 1	01	03	05	07	09	11	13	15	17	19	21	23	25	27	29	31	33	35	37	39	41	43	45	47	49	51	53	55	57	59	61	63	
Note 2																																	
Note 3																																	
Note 4																																	



DIVISIONS	33	34	35	36	37	38	39	40	41	42	43	44	45	46	47	48	49	50	51	52	53	54	55	56	57	58	59	60	61	62	63	64	
Note 1	65	67	69	71	73	75	77	79	81	83	85	87	89	91	93	95	97	99	101	103	105	107	109	111	113	115	117	119	121	123	125	127	
Note 2																																	
Note 3																																	
Note 4																																	

Pitch Sequence No. **030**

Pitch Sequence Name. **The Scale Of Silence**

Description / Group **Major and Minor Arpeggios, Scales and Modes**

Composer / Arr. **Adam Fullerton**

A musical staff consisting of two staves. The top staff has a treble clef and the bottom staff has a bass clef. Both staves are empty, with 32 measures each.

DIVISIONS	01	02	03	04	05	06	07	08	09	10	11	12	13	14	15	16	17	18	19	20	21	22	23	24	25	26	27	28	29	30	31	32
Note 1																																
Note 2																																
Note 3																																
Note 4																																

A musical staff consisting of two staves. The top staff has a treble clef and the bottom staff has a bass clef. Both staves are empty, with 32 measures each.

DIVISIONS	33	34	35	36	37	38	39	40	41	42	43	44	45	46	47	48	49	50	51	52	53	54	55	56	57	58	59	60	61	62	63	64
Note 1																																
Note 2																																
Note 3																																
Note 4																																

Pitch Sequence No. **031 - 100**

Pitch Sequence Name. **Chromatic Scale**

Description / Group **Major and Minor Arpeggios, Scales and Modes**

Composer / Arr. **Edward Williams**

DIVISIONS	01	02	03	04	05	06	07	08	09	10	11	12	13	14	15	16	17	18	19	20	21	22	23	24	25	26	27	28	29	30	31	32		
Note 1	C0	D \flat 0	D0	E \flat 0	E0	F0	F \sharp 0	G0	A \flat 0	A0	B \flat 0	B0	C1	D \flat 1	D1	E \flat 1	E1	F1	F \sharp 1	G1	A \flat 1	A1	B \flat 1	B1	C2	D \flat 2	D2	E \flat 2	E2	F2	F \sharp 2	G2		
Note 2																																		
Note 3																																		
Note 4																																		

DIVISIONS	33	34	35	36	37	38	39	40	41	42	43	44	45	46	47	48	49	50	51	52	53	54	55	56	57	58	59	60	61	62	63	64		
Note 1	A \flat 2	A2	B \flat 2	B2	C3	D \flat 3	D3	E \flat 3	E3	F3	F \sharp 3	G3	A \flat 3	A3	B \flat 3	B3	C4	D \flat 4	D4	E \flat 4	E4	F4	F \sharp 4	G4	A \flat 4	A4	B \flat 4	B4	C5	D \flat 5	D5	E \flat 5		
Note 2																																		
Note 3																																		
Note 4																																		

USER SET-UPS

Set-up No. Set-up Name.

Composer / Arr.

Date./..../....

BUTTONS *PAGE*

SENSOR	Select Sensor	Beam 1	Beam 2	Beam 3	Beam 4	Switch 1	Switch 2	Switch 3	Switch 4	Switch 5	Switch 6	Switch 7	Switch 8
PAGE LEFT 1	Ctrl A Source												
PAGE LEFT 2	Ctrl A Destination												
PAGE LEFT 3	Ctrl A Depth												
PAGE LEFT 4	Ctrl A Minimum												
PAGE RIGHT 1	Ctrl B Source												
PAGE RIGHT 2	Ctrl B Destination												
PAGE RIGHT 3	Ctrl B Depth												
PAGE RIGHT 4	Ctrl B Minimum												
PITCH SEQUENCE	PSQ Select												
RANGE	Max. Range												
PAGE LEFT 1	Min. Range												
BEAM DIVISION	No. of Divisions												
PAGE RIGHT 1	Max Polyphony												
PAGE LEFT 1	Offset												
TRIGGER MODE	Select Trigger Mode												
PAGE RIGHT 1	Gate Time												
TRANSCOPE	No. Semitones +/-												
PAGE RIGHT 1	Play Direction												
PAGE LEFT 1	Global												
MIDI UTILITIES	MIDI Program Select												
PAGE RIGHT 1	Switch Monitor												
PAGE RIGHT 2	MIDI Bulk Dump												
PAGE RIGHT 3	Bulk Receive												
PAGE LEFT 1	MIDI Channel												
PAGE LEFT 2	Start/Stop from												
PAGE LEFT 3	Realtime mode												
PAGE LEFT 4	MIDI Program Receive												

The settings for Switches 1 to 4 are particularly suitable for On/Off Switches

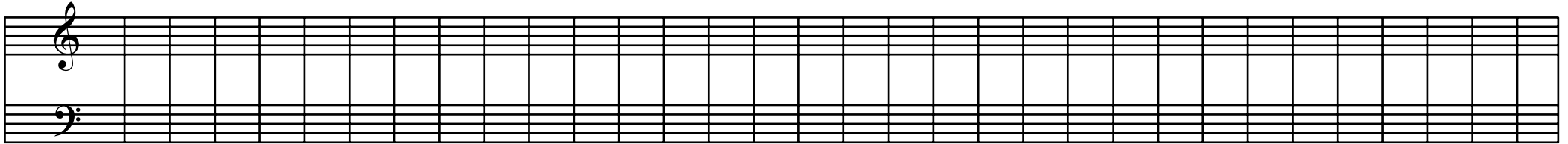
The settings for Switches 5 to 8 are particularly suitable for Proportional Switches (joysticks etc)

Pitch Sequence No.

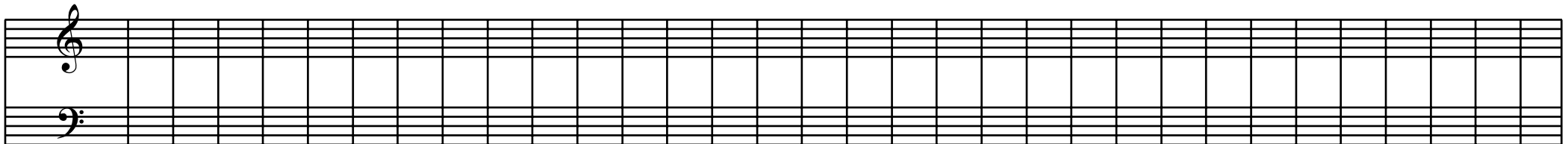
Pitch Sequence Name.

Description / Group

Composer / Arr.



DIVISIONS	01	02	03	04	05	06	07	08	09	10	11	12	13	14	15	16	17	18	19	20	21	22	23	24	25	26	27	28	29	30	31	32
Note 1																																
Note 2																																
Note 3																																
Note 4																																



DIVISIONS	33	34	35	36	37	38	39	40	41	42	43	44	45	46	47	48	49	50	51	52	53	54	55	56	57	58	59	60	61	62	63	64
Note 1																																
Note 2																																
Note 3																																
Note 4																																