

Installing Sonar Home Studio version 6 For use with Desktop Soundbeam



By Mark Newbold The Soundbeam Project Ltd May 2007

This guide is intended to help you configure Sonar Home Studio for use with the Desktop Soundbeam. **It is crucial that before you install Sonar Home Studio you have installed.**

- 1. The Desktop Soundbeam software and interface drivers. Also ensure that you have connected the Desktop Soundbeam interface, USB lead and that the interface is turned on. Also connect your sensors and switches to the Desktop Soundbeam Interface. For further information on how to do this please refer to the Desktop Soundbeam Handbook.**
- 2. An ASIO compatible soundcard. You will have been supplied an Edirol UA 1EX soundcard if you purchased the software directly from The Soundbeam Project.**
- 3. Make sure that you have your UA 1EX soundcard connected to your pc and the output from your soundcard is connected to your Amplifier and Speakers.**

The Sonar Home studio version 6 comes bundled with a copy of TTS-1 Virtual synthesiser. We will be using this as a sound source to use with the Desktop Soundbeam. You can find out more information about the TTS-1 synthesiser from the Sonar Home Studio handbook **page 228 Tutorial 8 – Using Soft Synths.** Further information about Sonar Home Studio can be found on the following pages.

- Page 139 Starting Sonar Home Studio
- Page 170 The Basics
- Page 229 Playing MIDI through Cakewalk TTS-1

If you at any time have difficulty in installing the software please contact Mark Newbold

Tel: 0117 9237075

Email: mark@soundbeam.co.uk

Installing the software

Insert your Sonar Home Studio software into the CD drive.
The installation software should run automatically, if the installation program does not start automatically follow the steps 1 to 2 below.

1. Click on Start

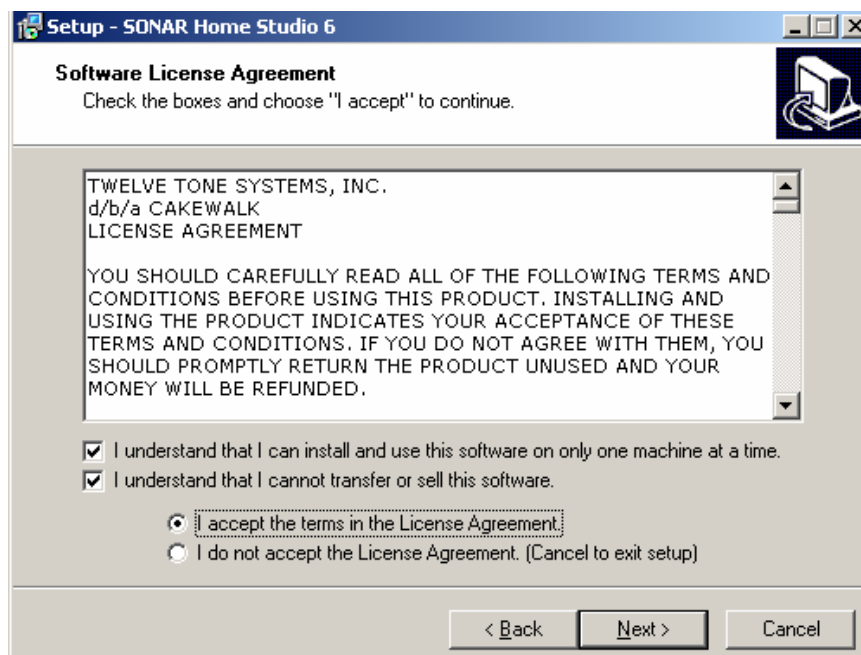


Next select My Computer from the program menu. When this opens select your CD drive normally drive letter D:



2. Double click on the CD Drive Sonar Home 6. This will run the installation program.

On the first installation page select **Install English**, and for the next page select **Install Sonar Home Studio 6**. On the following installer page select next, and ensure the check boxes on the next screen are enabled (see picture below).



Click on next. On the next page type your name and serial number. The serial number is on the back of the CD wallet that came with your software CD.

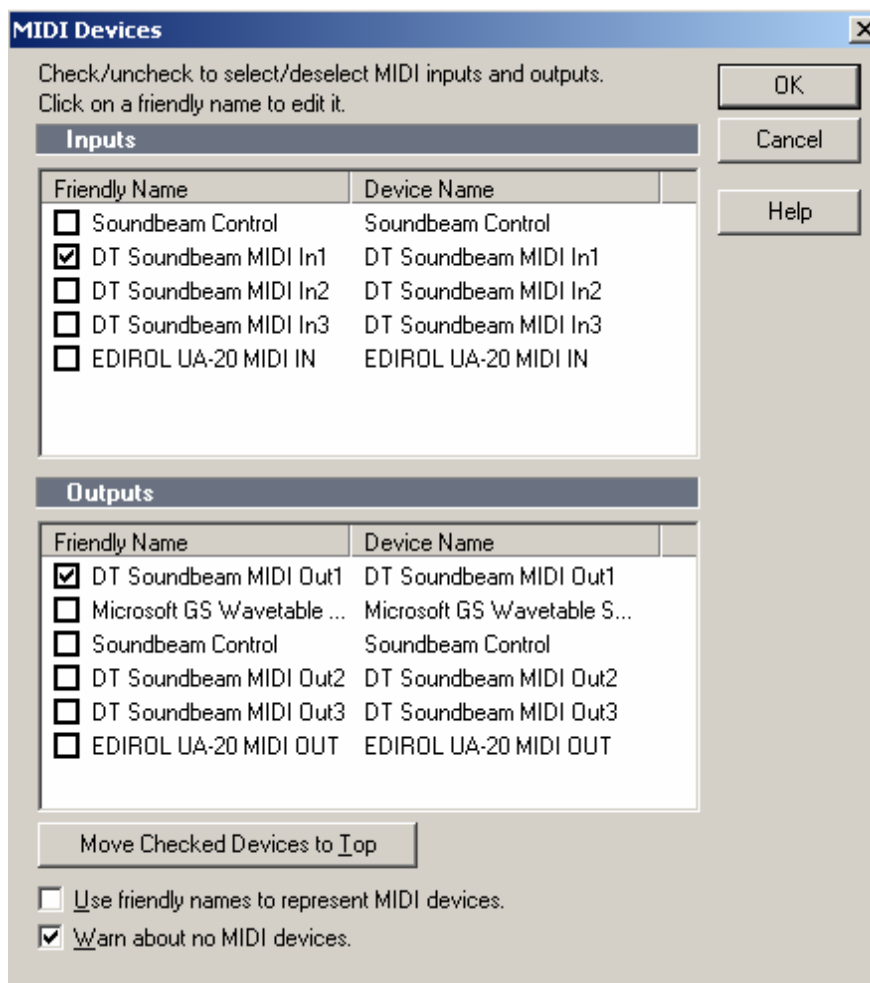
Click on next on the following nine installation pages, the program will now install. On the last installation page select Launch application and uncheck View README file.

Now click on finish to complete the installation.

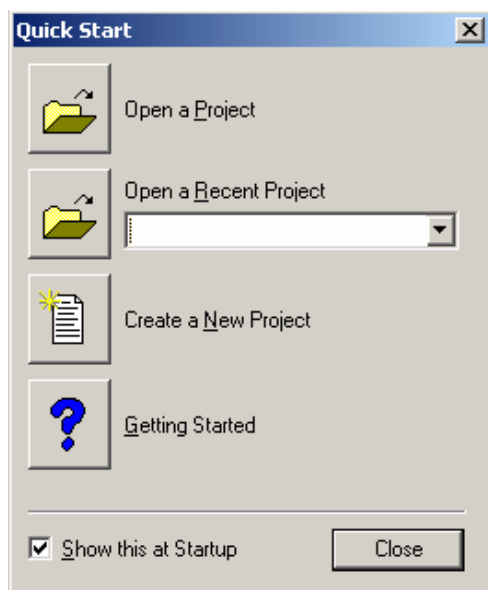
Starting Sonar for the first time

There are a number of initial settings we need to complete before we start to use Sonar with the Desktop Soundbeam Software.

On Running Sonar for the first time the program will run a series of tests to check your computer's Soundcard. After this initial test you will be prompted with the registration page until you have registered your copy of Sonar. You have 30 days to do this, so we will skip the registration process for the time being so we can setup the software. So click on Register Later to continue. Sonar will now have started. You will be prompted with select MIDI output devices as below. Ensure that you select DT Soundbeam MIDI in 1 and DT Soundbeam MIDI out 1.



Next click on Ok to save your settings, close the tip of the day panel; you will now be prompted with the quick start panel.

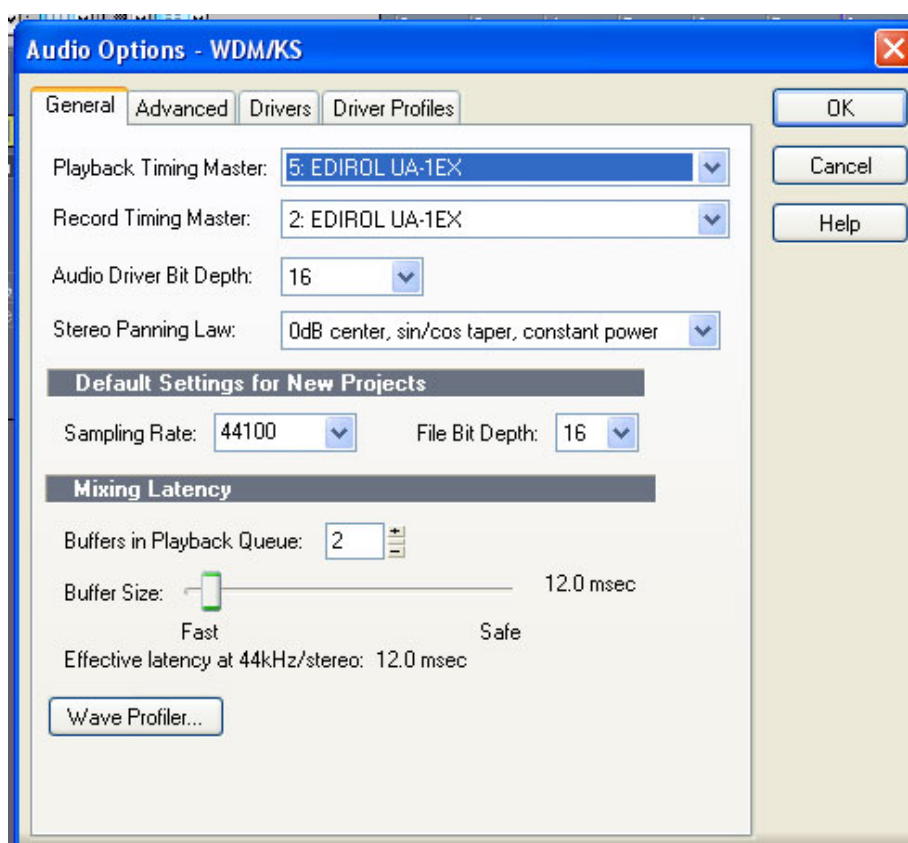


Click on the Create a New Project tab. Now select BLANK (no tracks or Busses)
Name the project Soundbeam.

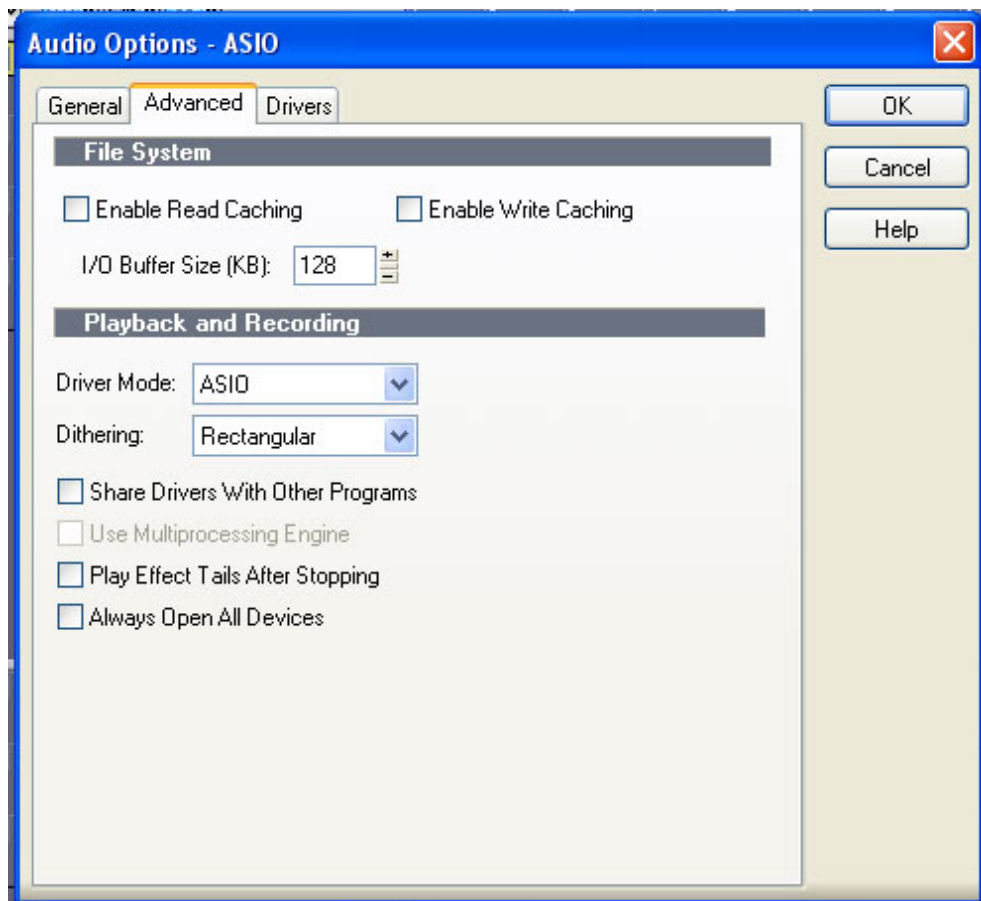
Next check the following settings to ensure that your Sonar has the correct settings.

Configuring your Soundcard

Select options Audio General to check the default Soundcard settings, this if purchased from The Soundbeam Project should be the Edirol UA1EX. Please ensure the settings are setup to the following: Settings

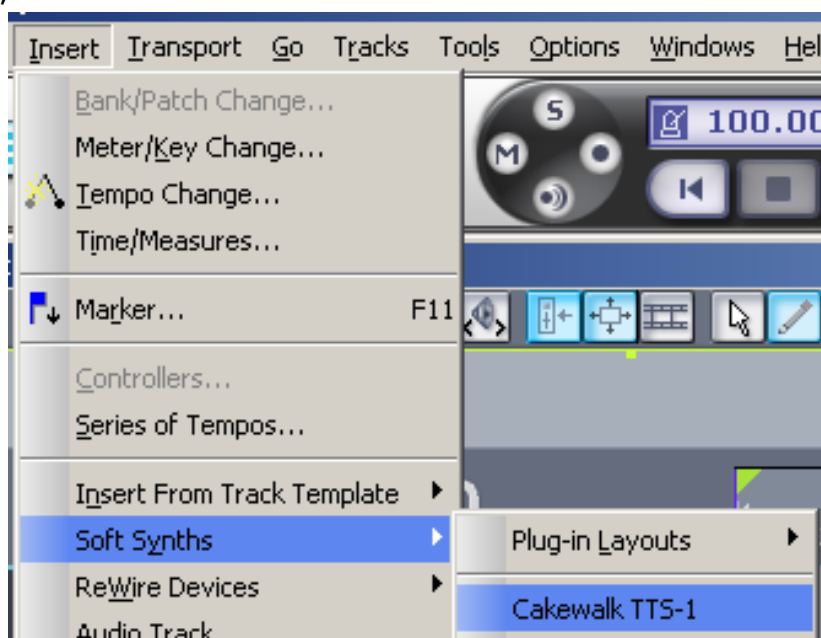


Now click on the Advanced tab ensure that **“Share Drivers With Other Programs” is not selected**. **Failure to do this will result in the sound stopping when you select other programs while running Sonar.** If you have made any changes click on Ok, you will then need to close Sonar for the changes to take effect. Save the project before restarting Sonar.

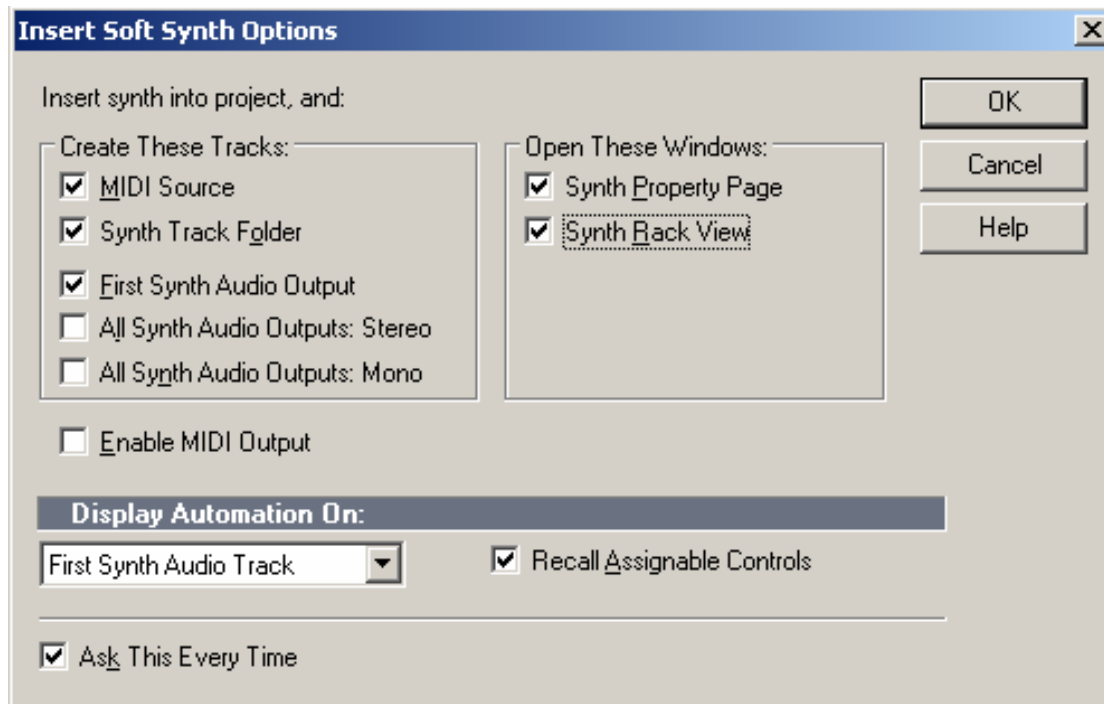


After restarting Sonar select your saved project Soundbeam when prompted by the quick start page.

We will now configure the project in Sonar using the TTS-1 virtual synthesiser. Next select insert from the menu, and then select Soft Synths, Cakewalk TTS-1

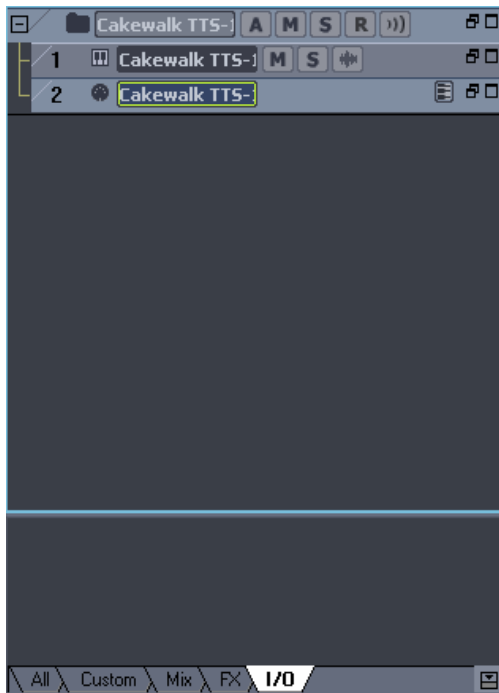


On the next panel select the following settings as below:



Click on Ok to continue. Your screen should now display the TTS-1 Synthesiser panel. We now need to connect the Desktop Soundbeam to the TTS-1 virtual Synthesiser. This is accomplished by selecting the In/Out tab located at the bottom of the Sonar software. Your view may be obscured by the TTS-1 panel so drag this to one side slightly.

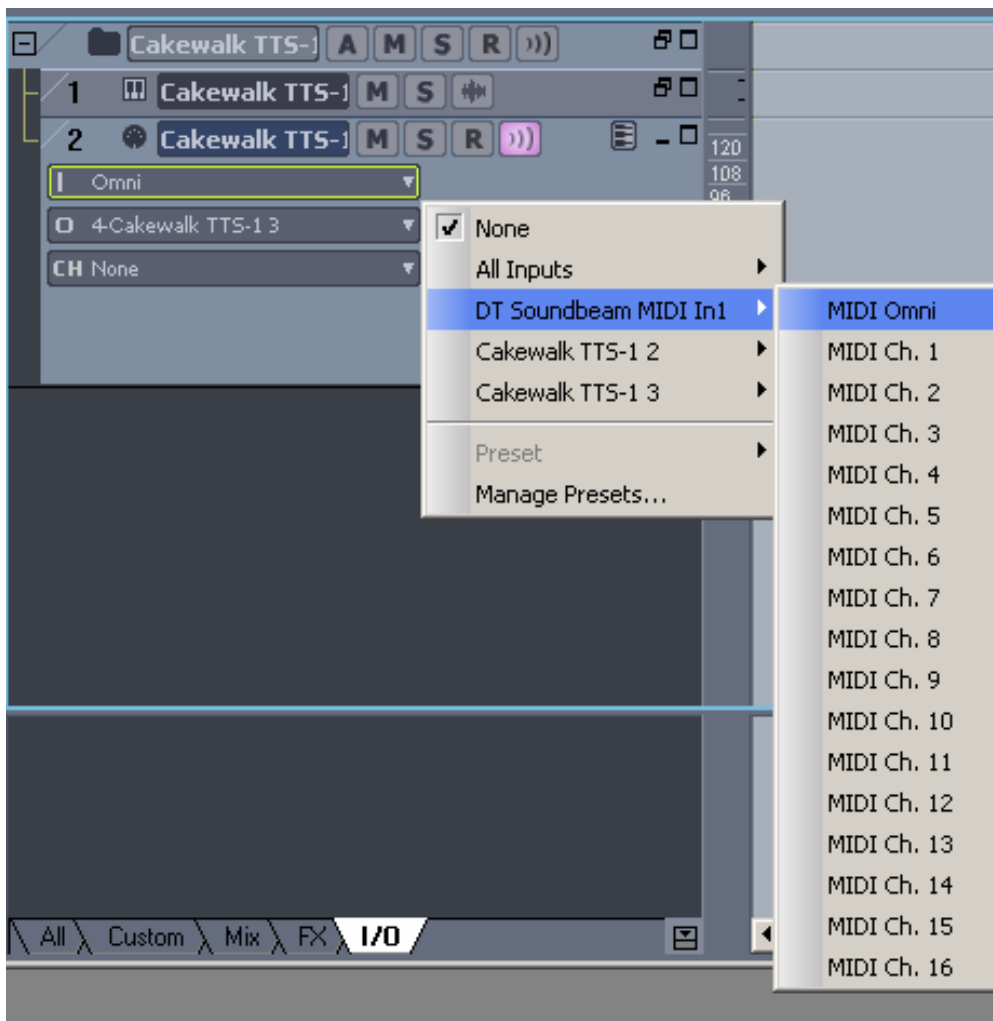




You will notice two tracks located at the top of the screen. The first track is allocated to the TTS-1 synthesiser; the second track is allocated to a MIDI track. We now need to alter the settings for the MIDI track. This is indicated with a small 5 pin MIDI plug. Click on the expand tab to expand the MIDI track.



Click on the Omni Tab; next select DT Soundbeam MIDI IN1 as an input device, then select MIDI omni.



Now save the File so you can load it when you next to run Sonar.

The TTS-1 Virtual synthesiser Plug-in can be directly controlled by the Desktop Soundbeam application. Run the Desktop Soundbeam application via the shortcut on your computer's desktop.



Each sensor and switch in the Desktop Soundbeam Software is allocated a different MIDI channel. This in turn controls each channel numbered 1 to 16 in the TTS-1 virtual Synthesiser.

You might notice that each time you select a different Set-up from the Desktop Soundbeam software the sound for each channel on the TTS-1 changes automatically when each set-up is loaded. This is altered via the MIDI program slider for each sensor/switch from within the Desktop Soundbeam software.

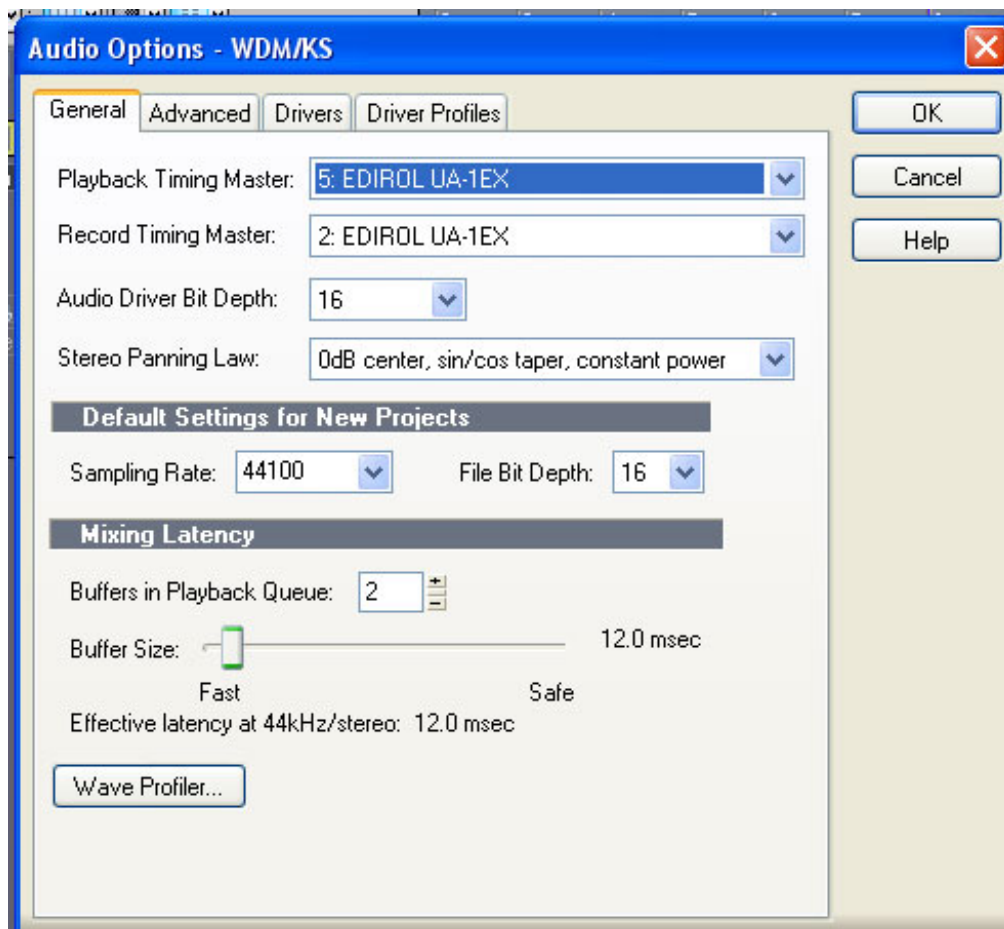
Try using the keyboard Left / Right Keys to cycle through the available Set-up's. Try triggering a switch or sensor to hear the different sounds from the TTS-1, if for any reason you get a stuck note you can reset the TTS-1 by clicking on the **PANIC** button. Further information can be read from the help file by clicking on **HELP**.

(For more information on the operation of the Desktop Soundbeam Software please refer to the Desktop Soundbeam handbook Page 17 "A Lightning Tour of The Controls")

Troubleshooting

No Sound output from Sonar

First ensure you have connected your Soundcard to an amplifier and speakers and that the amplifier is switched on. That also the volume on your Soundcard is turned up. If this does not solve the problem try clicking on the part indicator in the Virtual Soundcanvas, you should be able to audition a Sound and hear this from your speakers. If you do not hear a sound when clicking on the Part button ensure that your Sonar software is connected to your Soundcard. To check click on Options/Audio to ensure that Sonar is connected to your Soundcard



MIDI Fault Finding

If you hear a sound when clicking on the preview button in the TTS-1, but nothing is heard when you trigger a sensor or switches check the following:

Check there is MIDI information arriving to Sonar's MIDI input from the Desktop Soundbeam Software.

Do this by looking at the system tray (located in the bottom right hand corner of your desktop). Located here is a MIDI monitor this runs when you start Sonar. The monitor indicates when any MIDI data is received or transmitted by Sonar. If MIDI information from the Desktop Soundbeam Software is being received by Sonar the left hand Red input indicator should flash.



MIDI input indicator

If you are not receiving any MIDI information there are a number of items to check with the Desktop Soundbeam Software.

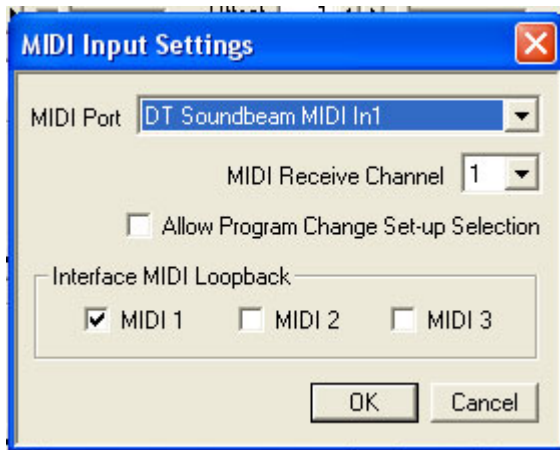
Soundbeam MIDI Interface connections

There are three items we can check to see if MIDI information is being received by Sonar.

1. That your Sensor or Switch is transmitting on the Correct MIDI output. This should be **Desktop Soundbeam MIDI Output 1**
2. The Desktop Soundbeam Interface MIDI Loopback is enabled
3. The Desktop interface Drivers are installed correctly

Interface MIDI Loopback

Check this by clicking on the MIDI Icon  and that the MIDI 1 check box in enabled.



If this does not solve your problem check the MIDI connections are setup correctly in the MIDI track (see page 8 for further details). And the MIDI input settings are setup correctly see page 5 for further information.

Desktop Soundbeam Interface Driver

To check whether your Desktop Soundbeam Application is connected to the Interface this is indicated in the bottom left hand corner of the Desktop Soundbeam program.

Soundbeam Desktop V1.000 Build 748 If you do not have a connection the software will indicate the following:

Desktop Soundbeam interface not found If the interface is not connected close the Soundbeam application and check that the Desktop Soundbeam interface is switched on and that the Desktop Soundbeam interface drivers are installed correctly. Please refer to the Desktop Manual or shortcut to the PDF file called "**Installation**" in the Soundbeam Program folder for more information. Or contact Mark Newbold on 0117 9237075 or email mark@soundbeam.co.uk if you are still experiencing problems.

International Registration information

Country/Distributor	Phone number	Fax number
Brazil/Roland Brasil Ltda.	(55) 11 4615 5666	(55) 11 4615 5699
Canada/Thinkware Canada	(888) 284-4659	(416) 842-3834
Denmark/Roland Scandinavia	(+45) 3916 6200	(+45) 3916 6222
Eastern Europe (Slovakia, Serbia and Montenegro, Ukraine, Macedonia, Croatia, Bosnia, Romania, Bulgaria, Moldova, Czech Republic, Hungary and Poland)/Roland East Europe Ltd.	+36 23 338041	+36 23 338087
Finland/Roland Scandinavia	+358 (0)9 682 40 20	+358 (0)6 82 05 20
France/Edirol Europe	0 810 000 371	
Germany/Edirol Europe	0700-33476520	
Italy/Edirol Italia	(+39) 02 93778344	
Norway/Roland Scandinavia	(+47) 22 73 25 08	(+47) 22 73 00 74
Portugal/Roland Portugal, S. A.	(+351) 22 608 00 60	(+351) 22 608 00 75
Spain/Roland Electronics de Espa-a, S.A.	(34) 93-308-1000	(34) 93-307-4503
Sweden/Roland Scandinavia	+46 (0)8-702 00 20	+46 (0)8-643 74 05
UK, Scotland, Wales & Ireland/Edirol Europe	0870 350 1515	
Australia/Intelliware Australia Pty. Ltd.	(02) 9981 8088	(02) 9981 3968
Japan/Edirol Corporation	81-53-439-1144	81-53-439-1099