

INSTALLING CUBASIS
AND EDIROL VIRTUAL SOUND CANVAS
FOR USE WITH DESKTOP SOUNDBEAM®

CONTENTS

SOFTWARE INSTALLATION	PAGE 3
INSTALLING VIRTUAL SOUND CANVAS	PAGE 5
CONNECTING CUBASIS TO THE EDIROL UA-20	PAGE 7
SELECTING SOUNDBEAM FILE FOR USE WITH CUBASIS	PAGE 9

SOFTWARE INSTALLATION

Follow the steps below to install Cubasis and The Edirol Virtual Sound Canvas.

If you already have Cubasis and a Sound card set up on your computer then please go to Page 4 for instructions on installing the Virtual Sound Canvas.

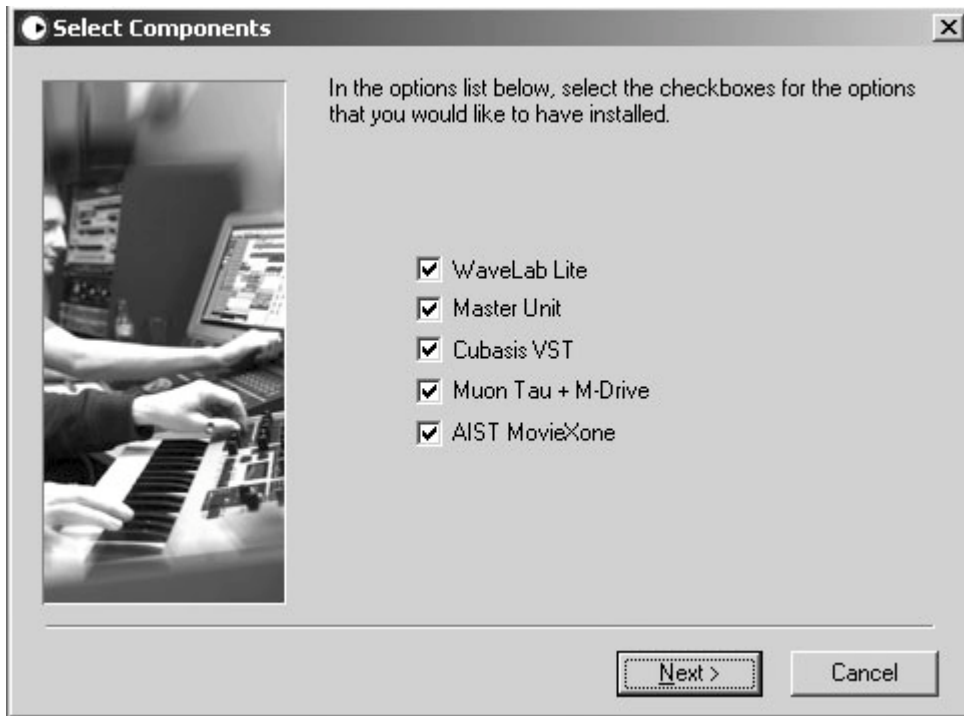
INSTALLING CUBASIS

Insert your Cubasis Installation CD into your Computers CD drive. The installation program should start automatically.



Click on the CUBASIS image in the centre of the image, this will run the installation program.

There are several options for the software installation. As we only need to install Cubasis we need to deselect the other installation options.



Right Click with your mouse on the Checkboxes to deselect the options we do not need to install. See picture below.



Follow the installation programs instructions after you have installed Cubasis move on to the next Step installing The Virtual Sound canvas on Page 5.

INSTALLING THE VIRTUAL SOUND CANVAS

Insert the Edirol Virtual Sound Canvas installation CD into your CD Drive.

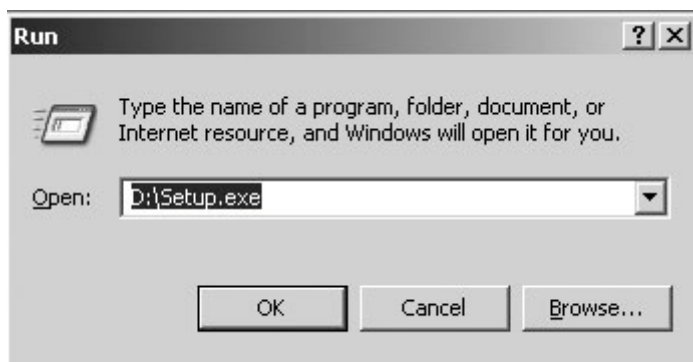
Left click with your mouse on start icon, this is located on the bottom left hand corner of your desktop.



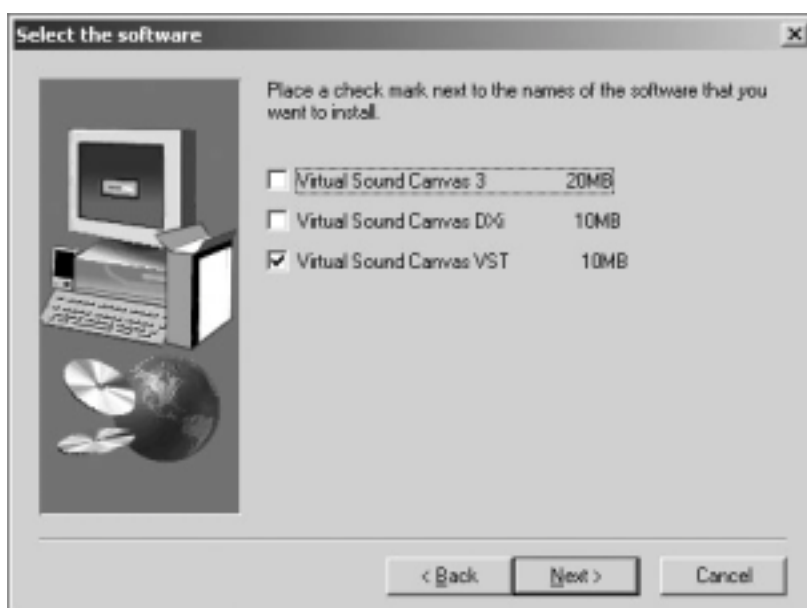
Now Click Run

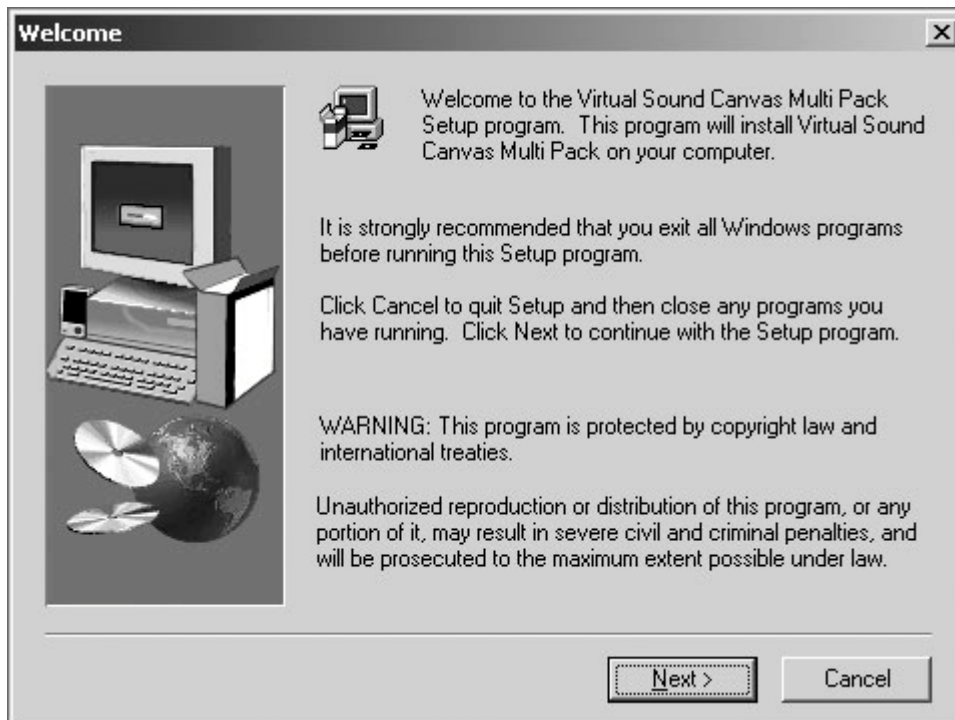


Now type D:\setup.exe into the dialogue, box if your CD drive is another drive letter other than D then type drive letter of your CD drive followed by D:\Setup.exe Now click on OK, the installation application should now run.

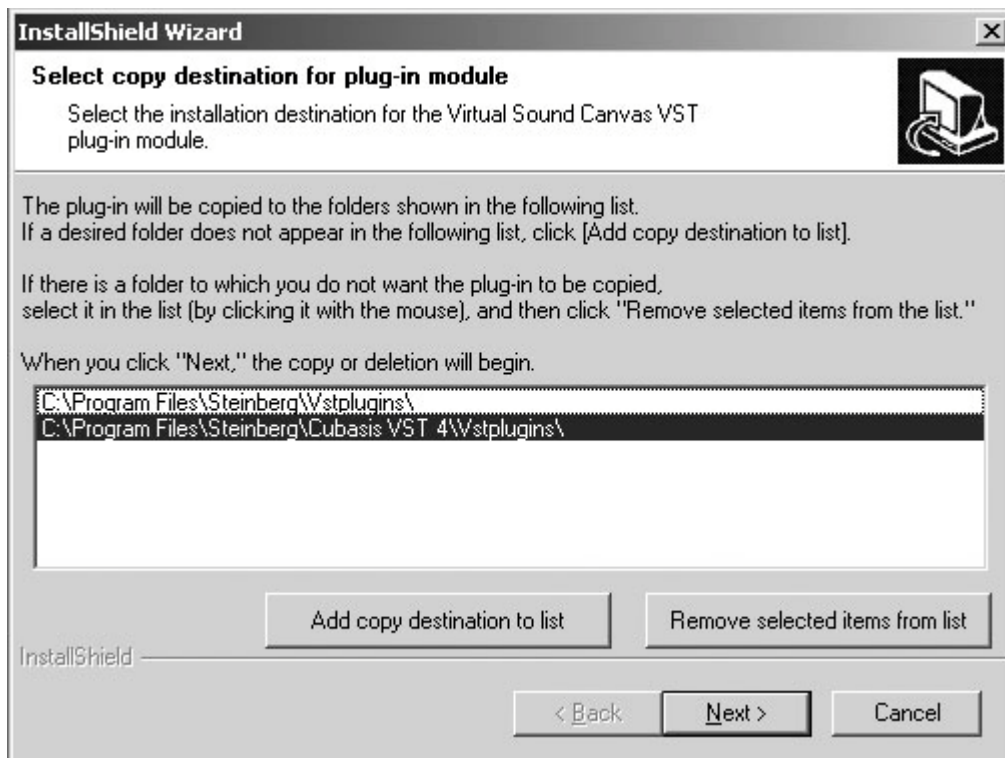


Click on 'Next' As we only need to select the VST version of the Virtual Sound Canvas, deselect the other options. See picture below.

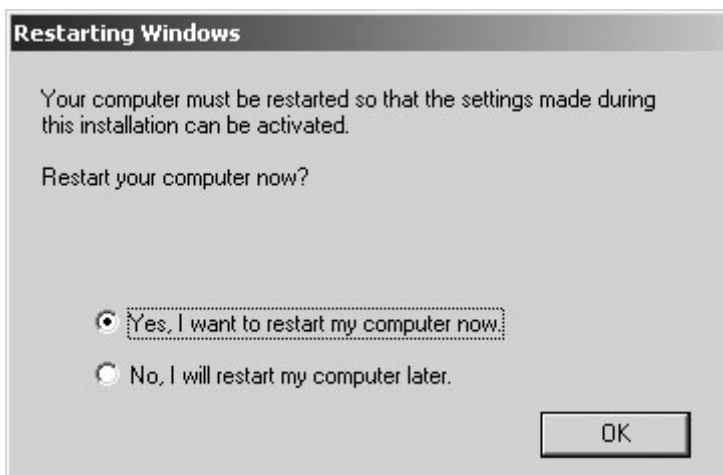




After Selecting Virtual Sound Canvas VST options press next.
The installation Program will now search to see if you have any programs
On your Computer that is compatible with the VST version Virtual Sound Canvas.
Once this has completed it will give you an option to select a destination for the plug in module.
We can now press next to finish the installation.



The Installation program will now finish installing the necessary files, you must now restart your computer when prompted.



On restarting your computer now open CUBASIS by double clicking the Cubase icon on your computers Desktop.



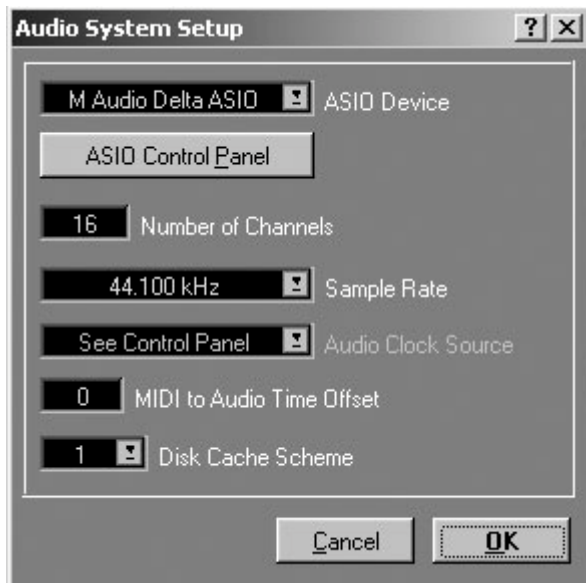
Cubase will now test your current system for compatible Soundcards etc once this has completed Cubasis will then need its audio system connecting to the Edirol UA-20 soundcard.

CONNECTING CUBASIS TO THE EDIROL UA-20

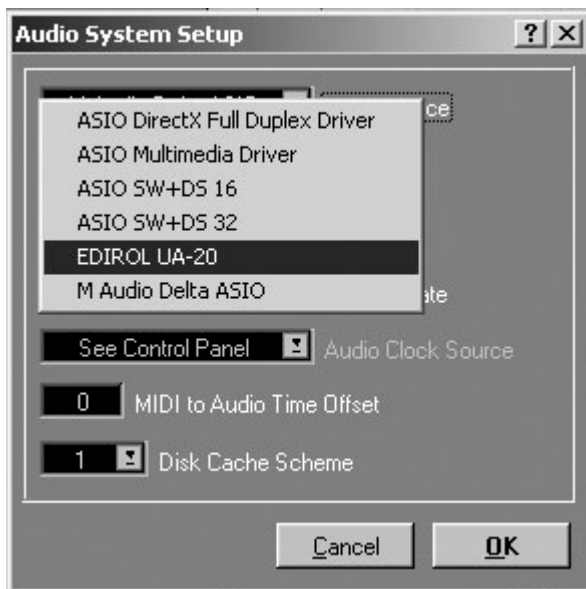
Select Options menu, then Audio Setup.



Now select **Audio System Setup**. Click on it with your left mouse button. This opens the **Audio System Setup Panel**. This is where we make settings for Cubasis to connect to your soundcard.



Now select via the **ASIO Device** drop down menu **Edirol UA-20** this will now connect Cubasis to your Edirol Soundcard.



Click on ok to finish.

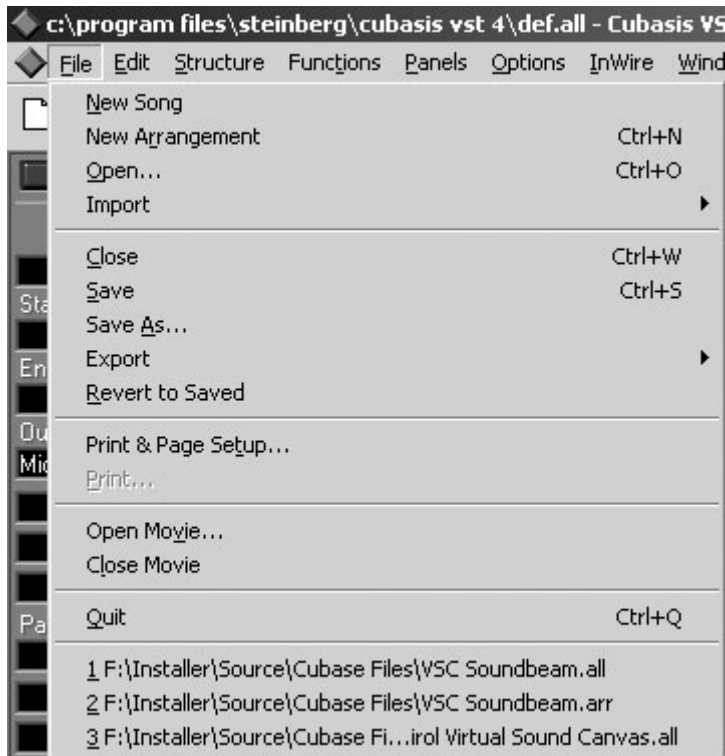
A WORD OF WARNING

If you run Cubasis without first ensuring that the Edirol UA-20 is connected, you will have to repeat the above steps, connecting Cubasis to the Edirol UA-20 again.

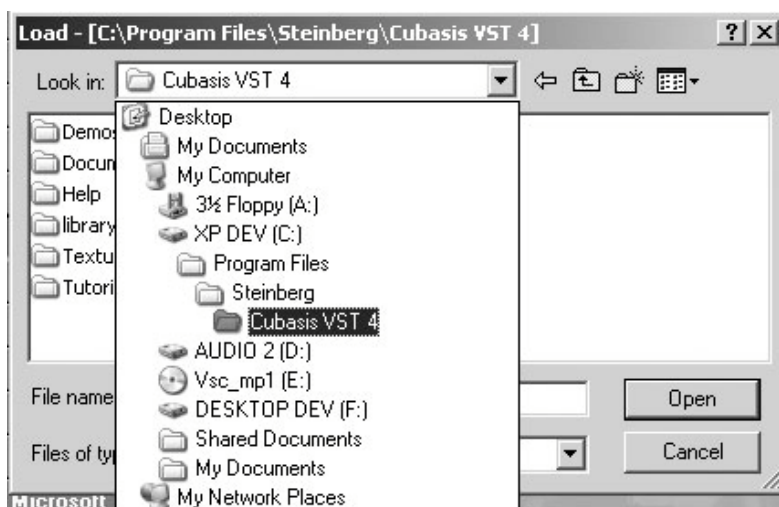
SELECTING SOUNDBEAM FILE FOR USE WITH CUBASIS

There is already a Cubase file that has already been installed with the Soundbeam software to work with Desktop Soundbeam.

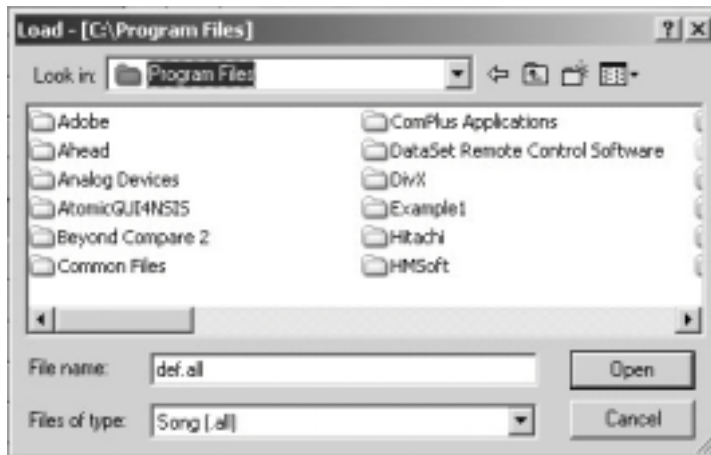
Select File menu then select open or shortcut key Control O,



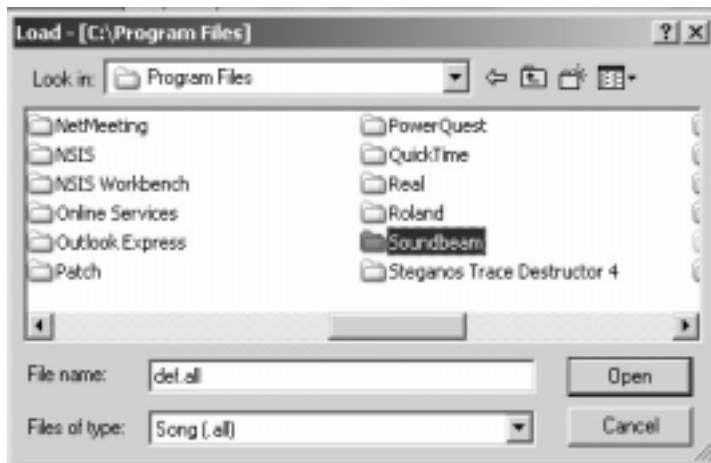
We now need to load the Cubase file that has already been installed with the Desktop Soundbeam installation CD. Follow the pictures below to do this.



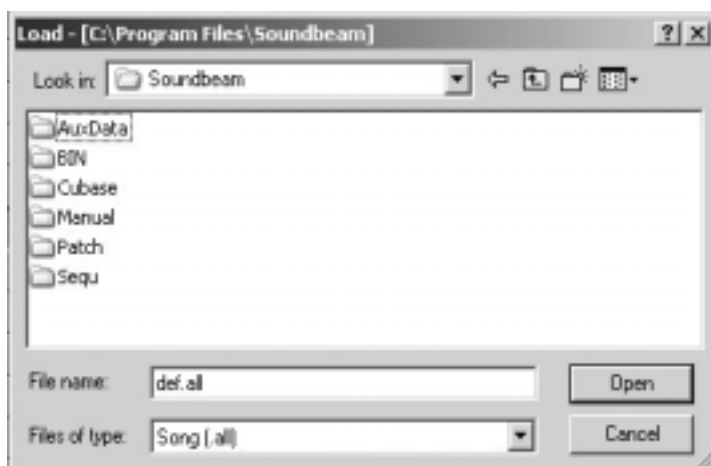
First select the Program files Folder,



Next Select the Soundbeam Directory,

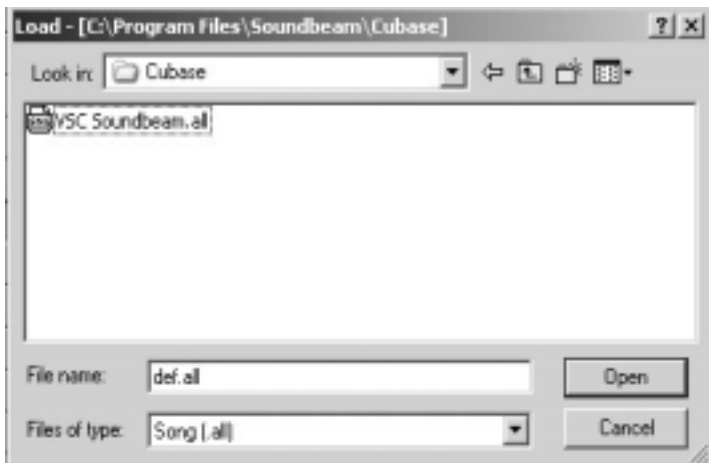


Now Select the Cubase Folder.



We can now select the Cubase File named VSC Soundbeam.all

Click open to load the file into CUBASIS.



Once the file is loaded your MIDI Track should already be set-up to work with the Edirol Virtual Sound Canvas and Desktop Soundbeam.



If you would like to view the Virtual Sound Canvas press **EDIT** located on the bottom left-hand side of the screen. This opens the VST instrument.



Now open the Desktop Soundbeam Application by clicking on the Desktop Soundbeam icon on your computer desktop, or by selecting Start Programs then Soundbeam clicking on the Desktop Soundbeam icon.